



508 Swan Reach Road, Bumberrah

7 3 2

## A RARE LIFESTYLE OPPORTUNITY & DUAL LIVING, BUSINESS POTENTIAL & 5 ACRES OF CHARM

Opportunities like this are incredibly hard to find. Set on a picturesque 5-acre allotment, this unique property offers the perfect blend of lifestyle, income potential, and flexible living arrangements.

Privately positioned at opposite ends of the property, the two residences each enjoy their own driveway access, creating a sense of independence and separation—ideal for extended families, guest accommodation, or rental income.

The charming two-bedroom cedar home, located near the front of the property, offers warmth and character with its high raked ceilings and open-plan living. Comfort is assured year-round with wood heating and a new reverse cycle air conditioner. The well-equipped kitchen features a 900mm freestanding stove, while the spacious bathroom/laundry showcases a stunning clawfoot bath. The generous master bedroom includes built-in robes, and a single carport completes the home.

At the heart of the property sits the main residence, formerly known as the Malcolm Cameron Studio Gallery. Rich in history and

**FOR SALE**  
\$890,000

**VIEW**  
By Appointment

**AGENTS**  
Kelly Quirke  
0427 064 816  
kquirke@ljhookerbairnsdale.com.au

**AGENCY**  
LJ Hooker Bairnsdale  
(03) 5152 4172

All information contained therein is gathered from relevant third parties sources.  
We cannot guarantee or give any warranty about the information provided.  
Interested parties must rely solely on their own enquiries.

LJ Hooker

personality, this beautifully converted home offers four bedrooms plus a study, with expansive open-plan living framed by soaring ceilings and abundant natural light. The kitchen is both functional and inviting, featuring ample bench space and a slow combustion stove. The recently renovated bathroom is truly a standout, complete with a freestanding modern circular bath and walk-in shower. Outside, established gardens surround the home, complemented by a large undercover entertaining area&mdash;perfect for gatherings, BBQs, and celebrations.

Adding even more versatility is a substantial commercial-grade building, previously operated as a successful catering kitchen. Fully registered and complete with two adjoining walk-in cool rooms, this space opens the door to a variety of business or creative pursuits. A fully self-contained cabin provides additional accommodation or an ideal home office.

Both residences are well-serviced with ample water supply, and the property also features a dam suitable for livestock, enhancing its rural appeal.

Whether you're seeking multi-generational living, a work-from-home lifestyle, or an exciting business opportunity, this exceptional property delivers endless possibilities in a peaceful and private setting. Inspect to truly appreciate the scope and potential on offer.

## MORE DETAILS

Property ID	ZRVFBF
Property Type	House
Land Area	2 hectare
Including	Study
	Air Conditioning
	Toilets (4)
	Deck
	Dishwasher
	Built-in-Robes
	Fully Fenced
	Water Tank

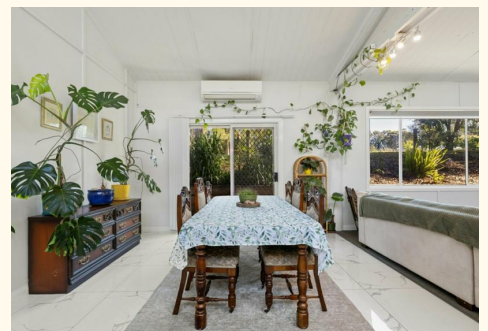
**Kelly Quirke 0427 064 816**

Sales Consultant | [kquirke@ljhookerbairnsdale.com.au](mailto:kquirke@ljhookerbairnsdale.com.au)

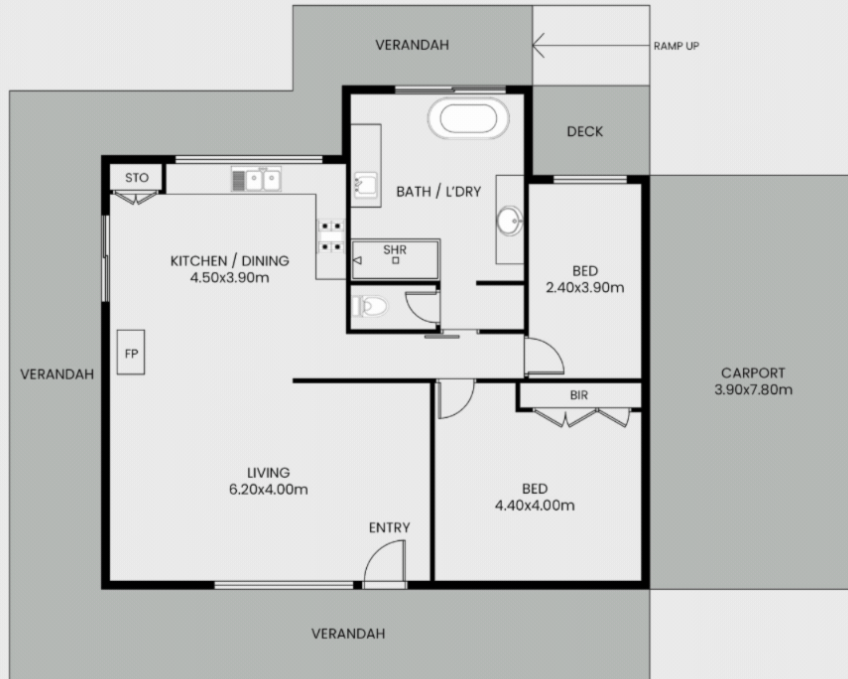
**LJ Hooker Bairnsdale (03) 5152 4172**

195 Main Street, BAIRNSDALE VIC 3875

[bairnsdale.ljhooker.com.au](http://bairnsdale.ljhooker.com.au) | [bairnsdale@ljhookerbairnsdale.com.au](mailto:bairnsdale@ljhookerbairnsdale.com.au)



# 508b Swan Reach Road, Bumberrah, VIC, 3902



This floor plan including furniture, fixture measurements and dimensions are approximate and for illustrative purposes only. BoxBrownie.com gives no guarantee, warranty or representation as to the accuracy and layout. All enquiries must be directed to the agent, vendor or party representing this floor plan.



All information contained therein is gathered from relevant third parties sources. We cannot guarantee or give any warranty about the information provided. Interested parties must rely solely on their own enquiries.

