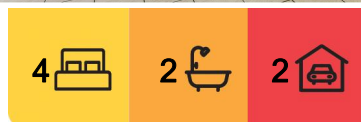


Buderim, 62 Jingellic Drive

OPEN HOME CANCELLED 17th Feb! WAKE UP TO A TROPICAL PARADISE

In an area surrounded by beautiful homes, this immaculate low-set rendered brick and tile home underpinned by 905m² is hitting the market for the first time in 22 years. From the moment you walk through the door it will feel like home, all you need to do is unpack your bags and you can be at the Mooloolaba beach within 15 minutes.

With four bedrooms and two bathrooms, a formal lounge and dining area, spacious and open plan kitchen and living area overlooking a peaceful landscaped garden, this home will suit families, downsizers and investors all looking to secure their new home in a blue-chip location.



For Sale

OPEN TO OFFERS

View

ljhooker.com.au/1B8CF4N

Contact

Nathan Johnson

0434 101 821

nathan.johnson@ljhooker.com.au



Disclaimer: All information contained therein is gathered from relevant third parties sources. We cannot guarantee or give any warranty about the information provided. Interested parties must rely solely on their own enquiries.

LJ Hooker Stafford
(07) 3357 1888

Designed to bring the flow of the inside with the outside areas, allowing the home to flood with warm natural light and cool breezes all year round. Spanning the back of the house is a covered patio, perfect for family events and casual dining as you relax and enjoy the quietness this location offers.

The master suite with ensuite, walk-in robe and private patio has great separation from the remaining three bedrooms and bathroom. All bedrooms have built-in cupboards and ceiling fans, ducted air-conditioning, and plantation shutters in three bedrooms.

Additional features include:

- Security screens and doors throughout
- Ducted air-conditioning and ceiling fans
- Remote controlled double garage
- Fully fenced yard
- Tile roof recently repointed and sprayed
- Solar System

When location is everything, 62 Jingellic Drive will be high on your list. In a short drive you are at the Matthew Flinders Collage, Sunshine Coast University, Buderim Village, Buderim Private Hospital, Woolworths Mountain Creek, Headland Golf Club and access to the Sunshine Motorway and Bruce Highway couldn't be easier!

For a full building and pest report, contact Nathan Johnson today.

More About this Property

Property ID	1B8CF4N
Property Type	House
Land Area	905 m²
Including	Dishwasher Outdoor Entertaining Built-in-Robes Solar Panels

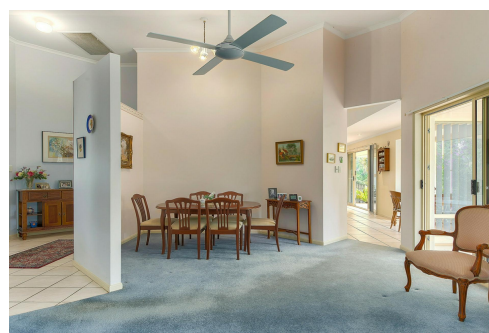
Nathan Johnson 0434 101 821

Sales & Marketing Consultant | nathan.johnson@ljhooker.com.au

LJ Hooker Stafford (07) 3357 1888

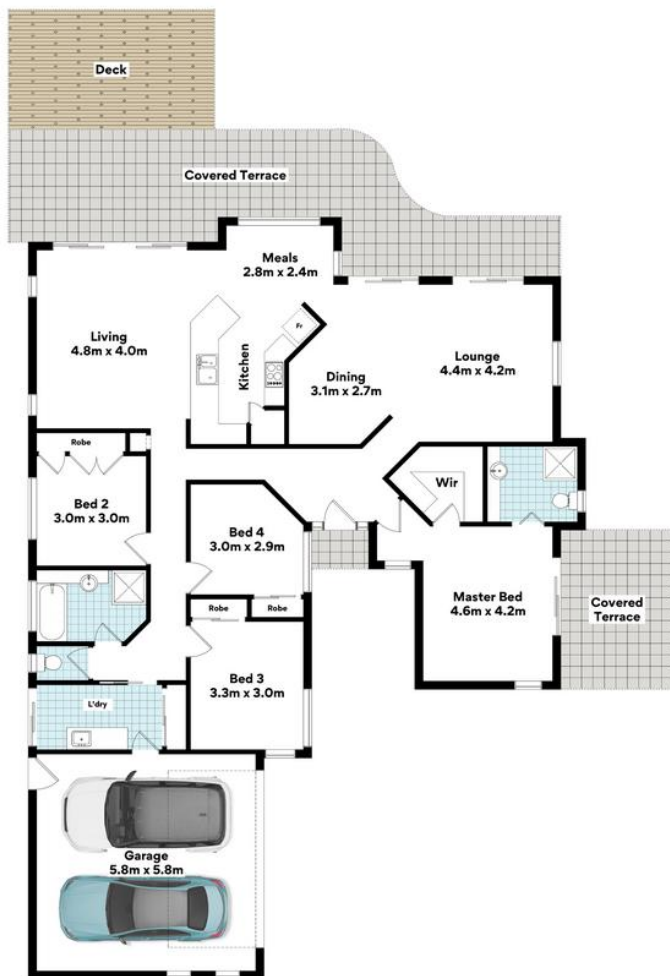
205 Stafford Road, STAFFORD QLD 4053

stafford.ljhooker.com.au | stafford@ljhooker.com.au



Disclaimer: All information contained therein is gathered from relevant third parties sources. We cannot guarantee or give any warranty about the information provided. Interested parties must rely solely on their own enquiries.

**LJ Hooker Stafford
(07) 3357 1888**



62 Jingellic Dr, Buderim



FLOOR AREA SIZES

Internal 166m² | External 67m²

Garage 36m²

TOTAL 269m²

Whilst every attempt has been made to ensure the accuracy of the floor plans contained here, measurements of doors, windows, rooms and any other items are approximate and no responsibility is taken for any error, omission or misstatement.

These plans are for representation purposes only. Provided by primapixel.com.au