



190 Gills Lane, Brunkerville

A TIMELESS COUNTRY ESCAPE WITH NORTH-FACING MOUNTAIN VIEWS

Nestled at the end of a peaceful country lane, this prestigious 5-acre (2 HA) estate offers the ultimate rural lifestyle without compromise. Boasting a sunny northerly aspect and an elevated position, the property captures breathtaking mountain vistas that provide an ever-changing backdrop to daily life.

The classic country homestead exudes character, featuring sweeping return verandahs, soaring 10ft ceilings, and generously proportioned rooms.

While perfectly comfortable as is, the expansive floor plan-including multiple living zones and a large farmhouse kitchen-offers an incredible canvas for those looking to add their personal touch to a high-end holding.

Outside, the land is as functional as it is beautiful:

- Versatile Grounds: Level to gently sloping pastured paddocks, perfect for horses or livestock.
- Infrastructure: A large machinery shed, horse shelter, established dam.

All information contained therein is gathered from relevant third parties sources. We cannot guarantee or give any warranty about the information provided. Interested parties must rely solely on their own enquiries.

3 3 2

FOR SALE
CONTACT AGENT

AGENTS

David Magin
0412 685 917
david.magin@ljhooker.com.au

Maya O'Brien
0423 962 399
maya.obrien@ljhooker.com.au

AGENCY

LJ Hooker Lake Macquarie
(02) 4915 3800



- The Bonus: A separate home office with its own bathroom, ideal for a professional suite or a private teenage retreat.
- Location 10 minutes to M1 Freeway access, 1 hour from Hornsby, 45 minutes to Newcastle.

Experience the privacy and serenity that only a Gills Lane address can provide.

The information contained herein has been provided by people we believe to be reliable, however all interested parties must rely on their own enquiries.

MORE DETAILS

Property ID	ZFHF7Q
Property Type	AcreageSemi-rural
Land Area	2 hectare
Including	Toilets (3)

David Magin 0412 685 917

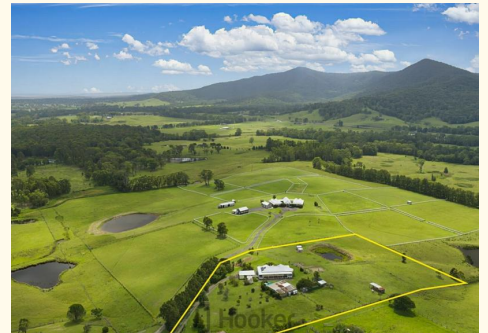
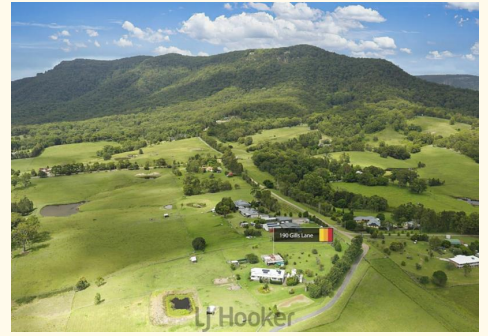
Sales Executive | david.magin@ljhooker.com.au

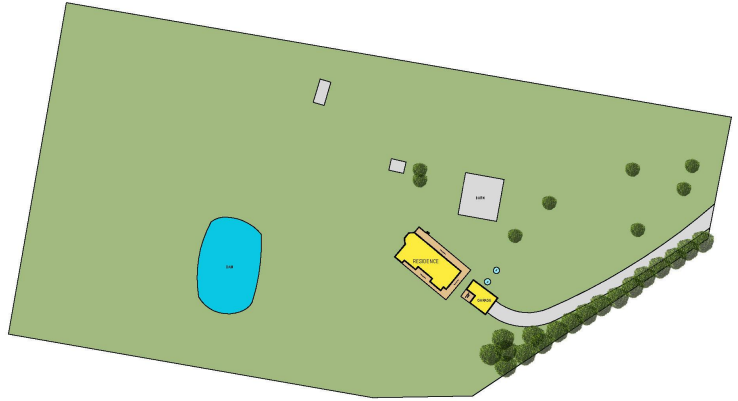
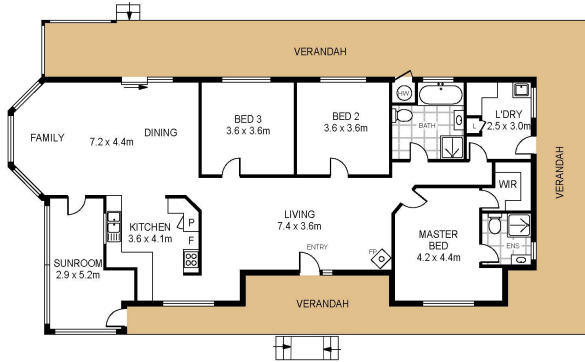
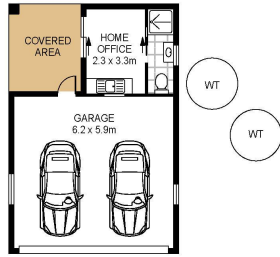
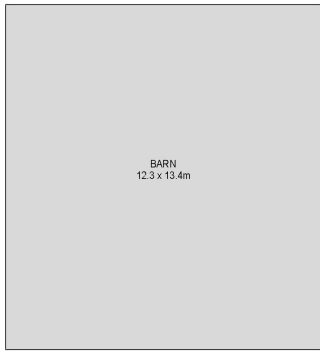
Maya O'Brien 0423 962 399

Sales Associate to Lachlan Porter | maya.obrien@ljhooker.com.au

LJ Hooker Lake Macquarie (02) 4915 3800

Shop 12, 240-260 Hillsborough Road, WARNERS BAY NSW 2282
lakemacquarie.ljhooker.com.au | warnersbay@ljhooker.com.au





190 Gills Lane
Brunkerville



Total Internal Floor Area: 162 sqm

Scale in metres. Indicative only. Dimensions are approximate. All information contained herein is gathered from sources we believe to be reliable. However we cannot guarantee its accuracy and interested persons should rely on their own enquiries.



All information contained therein is gathered from relevant third parties sources.
We cannot guarantee or give any warranty about the information provided.
Interested parties must rely solely on their own enquiries.

