

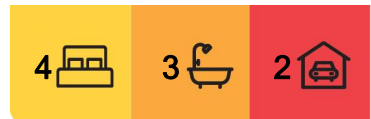
Bruce, 27/17 Thynne Street

Rise in this Tri-level Townhouse

Step into the sleek sophistication of Unit 27, a standout in the 'Rise' development. This tri-level townhouse blends contemporary design with practical living, offering a haven just moments from Black Mountain Nature Reserve, the University of Canberra, and Belconnen Mall.

On the ground level, an open-plan kitchen seamlessly connects to the living/dining area. Modern Smeg appliances, stone benchtops, and ample storage define the space. A bedroom with a built-in robe and a sunny courtyard grace this level, along with a full bathroom.

The upper level hosts a spacious main bedroom with ensuite and built-in wardrobe, alongside two other bedrooms with built-in robes. A modern main bathroom serves these bedrooms.



For Sale
\$850,000+

View
Sat 11th May @ 12:45PM - 1:15PM

Contact
Ryan Hedley
0458 440 375
ryan.hedley@ljdickson.com.au

EER ★★★★★★



LJ Hooker Dickson
(02) 6257 2111

Disclaimer: All information contained therein is gathered from relevant third parties sources. We cannot guarantee or give any warranty about the information provided. Interested parties must rely solely on their own enquiries.

The lower floor features direct access to an oversized tandem garage, ideal for storage, with laundry facilities discreetly tucked away. Private and secure, this complex is ready for its new owner.

Property Features:

Four-bedroom, three-bathroom townhouse in the 'RISE' development

Internal space of 175m² with 40m² external

Ideal for families

Close proximity to Radford college, Canberra and Calvary Hospital, Australian Institute of Health and Welfare

Centralised reverse cycled ducted AC with temperature controls

Modern kitchen with Smeg appliances

Close to upcoming Bruce shops

Upper level also includes linen

Double glazing throughout

Bedroom on main floor

Spacious main bedroom with ensuite

Full bathrooms on both living levels

Reverse cycle heating and cooling

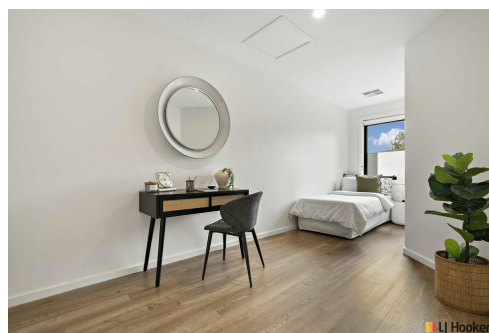
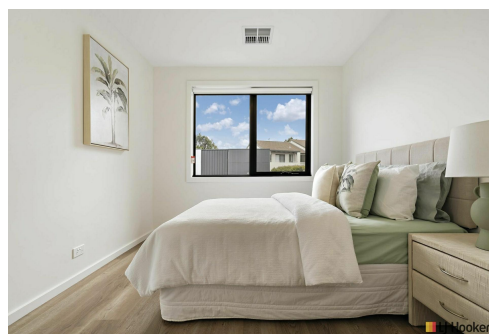
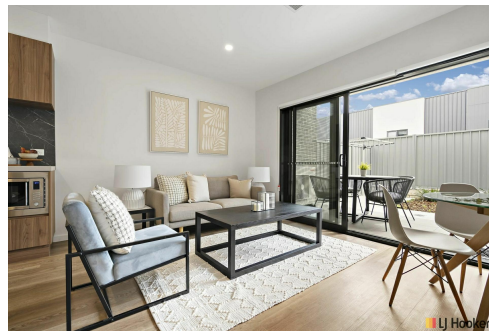
Tandem garage with large spaces for 2 SUV cars and internal access

Video intercom

Solar installed

Timber floor throughout

Bathtub in main bathroom



More About this Property

Property ID	1DXHKAF92
Property Type	Townhouse
EER	6

Ryan Hedley 0458 440 375

Licensed Agent and Auctioneer ACT/NSW | Associate Director |
ryan.hedley@ljhdickson.com.au

LJ Hooker Dickson (02) 6257 2111

36 Woolley Street, DICKSON ACT 2602
dickson.ljhooker.com.au | info@ljhdickson.com.au



LJ Hooker Dickson
(02) 6257 2111

Disclaimer: All information contained therein is gathered from relevant third parties sources. We cannot guarantee or give any warranty about the information provided. Interested parties must rely solely on their own enquiries.



Ground Floor

First Floor

The floor plan is not to scale; measurements are indicative and in metres. All features included in this 3D plan are for inspiration purposes only. This is not an exact replica of the property or the position of exterior elements. Plans should not be relied on. Interested parties should make and rely on their own enquiries.

27/17 Thynne Street, Bruce

Produced by DIAKRIT