



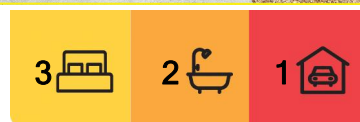
Browns Plains, 35/14 Fleet Street

Modern Comfort and Convenience in Browns Plains:
Spacious 3-Bedroom Townhouse with Resort-Style Amenities!

Nestled in an attractive and well-designed two-storey townhouse complex, this home offers ample space for everyone to relax or entertain. Ready for you to move in upon settlement, this property is perfect for those seeking comfort and convenience.

Indoor Features:

- This property interior is freshly painted
- 3 Good-Sized Bedrooms: All zoned upstairs, ensuring privacy and tranquility.
- Master Bedroom: Includes an ensuite, a walk-in wardrobe with glass mirrors, air-conditioning, a ceiling fan, and a private balcony.
- Two Additional Bedrooms: Equipped with built-in robes and ceiling fans.
- Modern Kitchen: Features stainless steel appliances, including an oven, stovetop,



For Sale

\$519,000 to \$569,0000

View

ljhooker.com.au/1VU2GRF

Contact

Benjamin Waite

0431 265 700

sales1@ljhbeenleigh.com.au



Disclaimer: All information contained therein is gathered from relevant third parties sources.

We cannot guarantee or give any warranty about the information provided. Interested parties must rely solely on their own enquiries.

LJ Hooker Beenleigh
(07) 3807 7900

rangehood, ceramic cooktop, dishwasher, pantry, and breakfast bar. The U-shaped kitchen design allows for efficient use of space, with a window overlooking the outdoor alfresco area.

- Open Plan Living and Dining Area: Airy and filled with natural light, perfect for family gatherings and entertaining.
- Separate Laundry Room: Conveniently located downstairs, with an additional toilet for guests.
- Spacious Family Bathroom: Located upstairs, complete with a shower over bath, large vanity with ample cupboard storage, and a toilet.

Additional Features:

- Air-conditioning in the living area and main bedroom, security screens, tiled downstairs and carpeted upstairs, internal access to a single garage.

Outdoor Features:

- Covered Entertainment Area: Flows seamlessly from the dining area to a private courtyard, perfect for outdoor dining and relaxation.
- Single Garage: With an automatic door opener and internal access, plus an additional car park space on the driveway.
- Side Access: Providing additional convenience.
- Complex Amenities: Residents can enjoy a well-maintained swimming pool, a covered BBQ/entertaining area, and a fully equipped gymnasium.
- Secure Complex: With a total of 62 units, security cameras covering common areas, and a friendly On-Site Management team that looks after the park-like grounds, ensuring a quiet and peaceful environment.

Location Benefits:

Living at 35/14 Fleet Street, Browns Plains, offers residents unparalleled convenience and access to a variety of amenities. The complex is situated close to major shopping centers, including Grand Plaza Shopping Centre, which offers a wide range of retail stores, dining options, and entertainment facilities. Browns Plains is also well-connected by public transport, making commutes to the city and surrounding areas hassle-free. Families will appreciate the proximity to reputable schools, parks, and recreational facilities, ensuring a balanced lifestyle. Additionally, the area boasts a friendly community atmosphere and is surrounded by beautiful, well-maintained parks and walking trails.

This beautifully maintained property at 35/14 Fleet Street, Browns Plains, is the perfect blend of modern living and convenience. Don't miss the opportunity to make this your new home!



LJ Hooker Beenleigh
(07) 3807 7900

Disclaimer: All information contained therein is gathered from relevant third parties sources. We cannot guarantee or give any warranty about the information provided. Interested parties must rely solely on their own enquiries.

More About this Property

Property ID 1VU2GRF

Property Type Townhouse

Benjamin Waite 0431 265 700

Licenced Real Estate Agent | sales1@ljhbeenleigh.com.au

LJ Hooker Beenleigh (07) 3807 7900

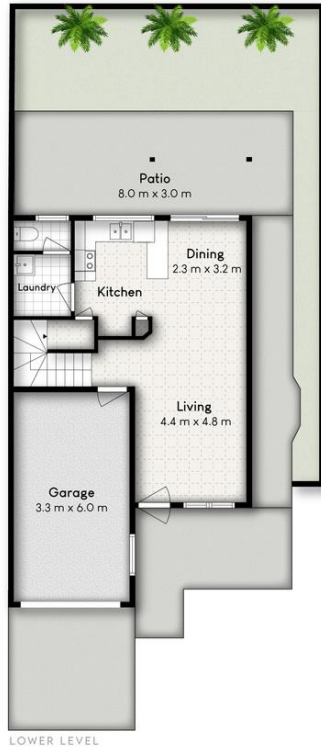
14-16 James Street, BEENLEIGH QLD 4207

beenleigh.ljhooker.com.au | bso@ljhbeenleigh.com.au



Disclaimer: All information contained therein is gathered from relevant third parties sources. We cannot guarantee or give any warranty about the information provided. Interested parties must rely solely on their own enquiries.

**LJ Hooker Beenleigh
(07) 3807 7900**



35/14 FLEET STREET, BROWNS PLAINS

3 2 1

Internal: 98m² | External: 83m² | Total: 181m²

Whilst every attempt has been made to ensure the accuracy of the floor plan contained here, measurements of doors, windows, rooms and any other item are approximate and no responsibility is taken for any error, omission, or misstatement. This plan is for illustrative purpose only and should only be used as such by any prospective purchaser.

