



## Brookfield, 17 Hilda Drive

A Refined Family Retreat with Exceptional Comfort and Location

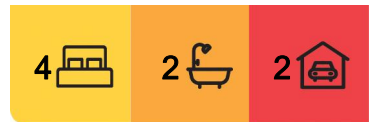
Welcome to 17 Hilda Drive, Brookfield. A modern and meticulously maintained family residence that blends sophisticated design with everyday practicality. Set on a generous 448m<sup>2</sup> allotment, this impressive four-bedroom, two-bathroom home is the epitome of low-maintenance living, perfectly suited to young families, first home buyers, or savvy investors looking for a turn-key opportunity in a thriving community.

From the moment you arrive, the home exudes quality, and a contemporary neutral palette creates a sense of openness and elegance that continues throughout. The heart of the home is a spacious open-plan living and dining area, ideal for both relaxing and entertaining, with ample natural light and a seamless connection to the outdoor spaces.

The well-appointed kitchen will impress the home chef, featuring gas cooking appliances, modern cabinetry with ample storage, and generous bench space, perfect for everything



**Disclaimer:** All information contained therein is gathered from relevant third parties sources. We cannot guarantee or give any warranty about the information provided. Interested parties must rely solely on their own enquiries.



**For Sale**  
Please Call

**View**  
[ljhooker.com.au/7YJ12](https://ljhooker.com.au/7YJ12)

**Contact**  
**Adam Elsherif**  
0413 222 069  
adame@ljhooker.com.au  
**Taylor Downs**  
0490 528 750  
taylordowns@ljhooker.com.au

**LJ Hooker Sunbury**

from family meals to hosting dinner parties. The adjoining living zone is fitted with a split system air conditioner for cooling in the warmer months, while ducted heating keeps the home cosy all year round.

Accommodation includes four generous bedrooms, thoughtfully zoned for privacy. The master suite is a true retreat with its own private ensuite and built-in robe. An additional bedroom includes a triple wardrobe, ideal for growing children or guests, and all bedrooms are serviced by a stylish central bathroom.

Step outside to discover a beautifully landscaped backyard, designed for effortless family enjoyment. Whether it's playtime for the kids or a tranquil evening with friends, the outdoor space is both functional and serene.

Adding to the home's appeal is the double car garage with internal access, enhancing both security and convenience.

#### Location Highlights:

Walking distance to Al Iman College campus.

Short drive to Primary Schools and Melton College.

Childcare is just steps away at the end of the street.

Melton train station is just a short drive, making daily commutes stress-free.

A Short drive to Woodgrove shopping centres, and all essential amenities.

A Short drive to the Western freeway.

This is more than just a house, it's a lifestyle. 17 Hilda Drive offers the rare combination of modern elegance, family-friendly design, and unbeatable convenience in one of Brookfield's most sought-after pockets.

#### Key feature:

Central ducted heating.

2 X split system air-conditioning.

Roller Blinds to all doors & Windows.

High ceiling.

Dishwasher.

Clothing line.

Contact Adam Elsherif on 0413 222 069 to book your next inspection.

## More About this Property

<b>Property ID</b>	7YJ12
<b>Property Type</b>	House
<b>Land Area</b>	448 m2

**Adam Elsherif 0413 222 069**

Director/OIEC | adame@ljhooker.com.au

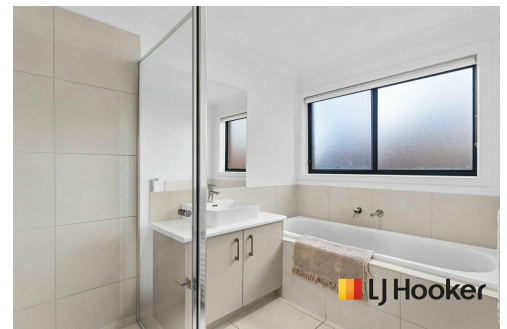
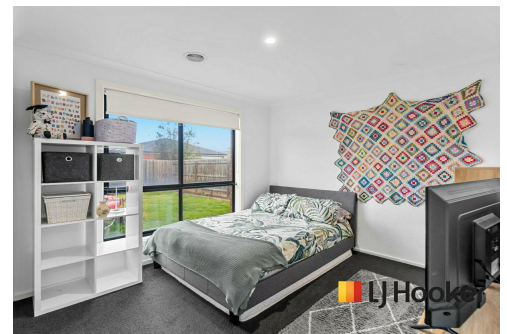
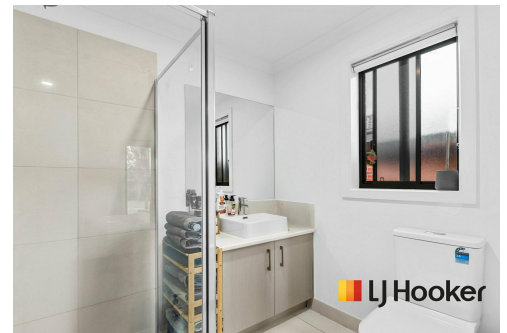
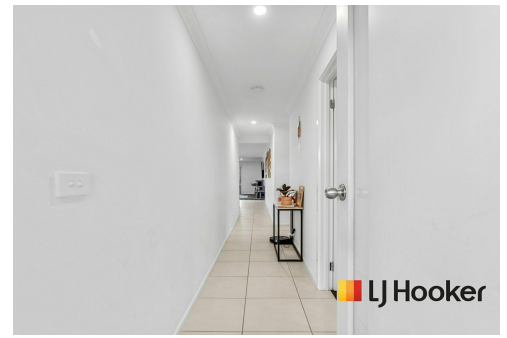
**Taylor Downs 0490 528 750**

Sales Associate | taylordowns@ljhooker.com.au

**LJ Hooker Sunbury**

Shop 12, Sunbury Square Shopping Centre, 2-28 Evans Street, SUNBURY VIC  
3429

sunbury.ljhooker.com.au | sunbury@ljhooker.com.au



**LJ Hooker Sunbury**

**Disclaimer:** All information contained therein is gathered from relevant third parties sources. We cannot guarantee or give any warranty about the information provided. Interested parties must rely solely on their own enquiries.