



8 Eucalyptus Court, Broadford


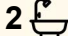
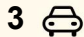
Comfort, Space and Convenience

This beautifully maintained and thoughtfully designed family home offers comfort, versatility, and exceptional lifestyle appeal. Set on a large block of 1,034 sqm, the spacious residence features three generous-sized bedrooms plus a versatile fourth bedroom or study, ideal for growing families or those working from home. The master bedroom includes a walk-in robe and modern ensuite, while bedrooms 2 and 3 are serviced by a central main bathroom and have built-in robes.

At the heart of the home lies a warm and inviting timber kitchen, complete with stainless steel appliances, including a dishwasher. The kitchen overlooks an open plan lounge and dining area, perfect for everyday living and entertaining. An added highlight is the large rumpus room, a fantastic space to enjoy all year round, whether you're hosting guests or enjoying family time.

Comfort is ensured throughout with ducted heating, evaporative cooling, a split system air conditioner, and quality curtains.

Step outside and you'll find a covered pergola, extensive paving, and well-maintained garden beds and lawn, ideal for relaxing or entertaining. For the tradie, hobbyist, or those needing extra storage, there's a huge 12x6m shed with a toilet, plus a double garage with internal access for added convenience.

4  2  3 

FOR SALE

Please Call

AGENTS

Gavin Henderson

0408 359 764

ghenderson.broadford@ljhooker.com.au

Sally Long

0477 437 281

sally.long@ljhooker.com.au

AGENCY

LJ Hooker Broadford | Kilmore

(03) 5784 2558

All information contained therein is gathered from relevant third parties sources.

We cannot guarantee or give any warranty about the information provided.

Interested parties must rely solely on their own enquiries.



Positioned in a quiet court and close to all Broadford amenities, this home offers fantastic proximity to the Broadford Train Station, Broadford Secondary College, Broadford Primary School and the town centre - all less than 2km away.

Whether you're upsizing, downsizing or investing, 8 Eucalyptus Court offers the complete package: space, style, and location. Don't delay! Please contact Gavin Henderson on 0408 359 764 if you have any queries.

MORE DETAILS

Property ID	7S8HJS
Property Type	House
Land Area	1034 m2
Including	Toilets (3)

Gavin Henderson 0408 359 764

Principal | ghenderson.broadford@ljhooker.com.au

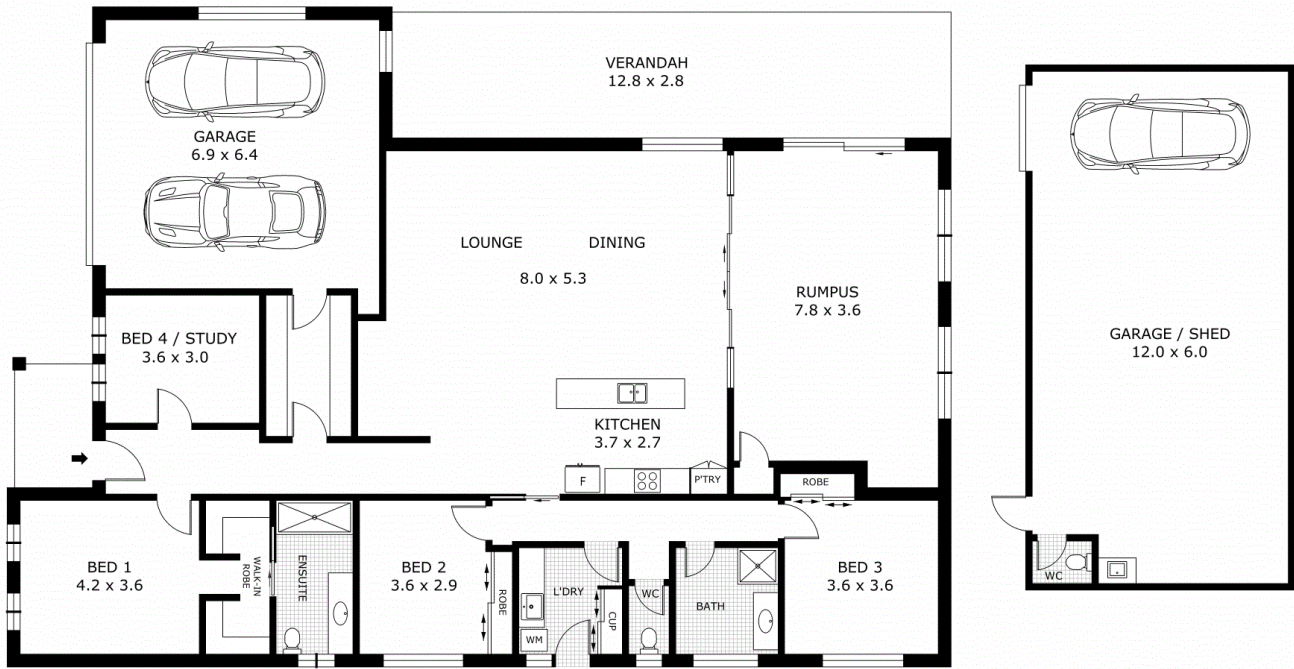
Sally Long 0477 437 281

Licensed Real Estate Agent | sally.long@ljhooker.com.au

LJ Hooker Broadford | Kilmore (03) 5784 2558

1629 Broadford Wandong Road, BROADFORD VIC 3658
broadford.ljhooker.com.au | broadford@ljhooker.com.au





Scale in metres. Indicative only. Dimensions are approximate. All information contained herein is gathered from sources we believe to be reliable. However we cannot guarantee its accuracy and interested parties should rely on their own enquiries.

Residence	- 214.5 m ²
Garage	- 40.7 m ²
Verandah	- 35.8 m ²
Garage / Shed	- 72.0 m ²
Total	- 363.0 m²



8 Eucalyptus Court, Broadford

