

Broadford, 6 Parkland Place

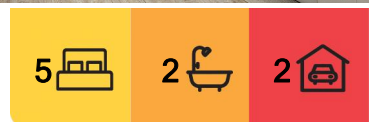
A Spacious Family Haven

This 34-square, beautifully designed 5-bedroom, 2-bathroom family home offers the perfect blend of space, comfort, and modern living. Situated at the end of a peaceful court, this property is ideal for growing families looking for a quiet yet convenient lifestyle.

The master bedroom is designed for privacy and includes an ensuite bathroom with the biggest shower I have ever seen and a huge walk-in wardrobe. The additional bedrooms are generously sized, each equipped with built-in wardrobes and shared access to the main bathroom, which is family-friendly with a bathtub, shower, and separate toilet.

The layout includes two living areas, with the main living space offering an open-plan design that seamlessly connects to the dining and kitchen areas, enhanced by large windows that invite natural light. A second living area provides flexibility, serving as a formal lounge or rumpus room and offers ample space, also granting access to an outdoor entertaining area.

The kitchen is a highlight of the home, featuring a large, modern design with a walk-in pantry, an island bench for additional workspace, and high-quality appliances. The home



For Sale
Please Call

View
ljhooker.com.au/7QVHJS

Contact
Sally Long
0477 437 281
sally.long@ljhooker.com.au



LJ Hooker Broadford | Kilmore
(03) 5784 2558

Disclaimer: All information contained therein is gathered from relevant third parties sources. We cannot guarantee or give any warranty about the information provided. Interested parties must rely solely on their own enquiries.

showcases a contemporary style with square set corners, ensuring a sleek appearance throughout. Other features include an energy-efficient heating and refrigerated cooling system which provides comfort year-round; a wood fire for those chilly winter nights; wooden floating floors and carpets to the bedrooms. The very high ceilings and square set cornice throughout adds to the luxury. This design creates a spacious and functional family home, perfectly suited for relaxation and entertaining.

Set on a 600 sqm block, this home has beautifully designed outdoor spaces while maintaining a low-maintenance lifestyle. Located close to local schools, shops, and parklands, everything your family needs is just moments away. Don't miss this opportunity to secure a spacious and stylish family home in the heart of Broadford. Contact us today to arrange your private inspection! Please direct all enquiries to Sally Long on 0477 437 281.

More About this Property

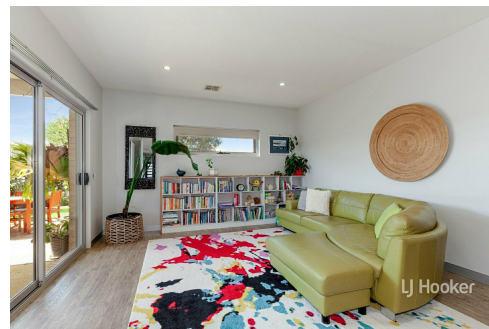
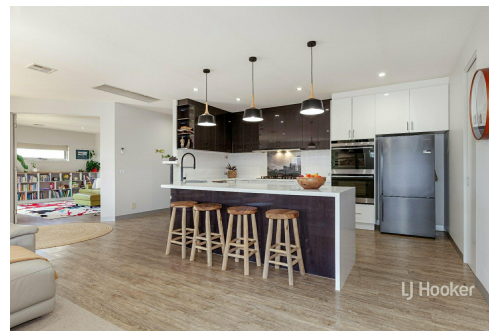
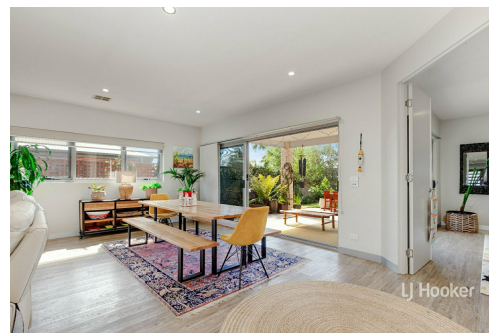
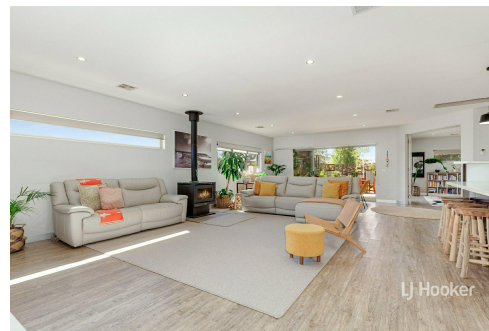
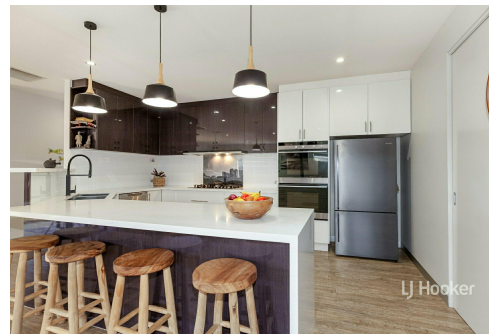
Property ID	7QVHJS
Property Type	House
Land Area	622 m2
Including	Toilets (2)

Sally Long 0477 437 281

Licensed Real Estate Agent | sally.long@ljhooker.com.au

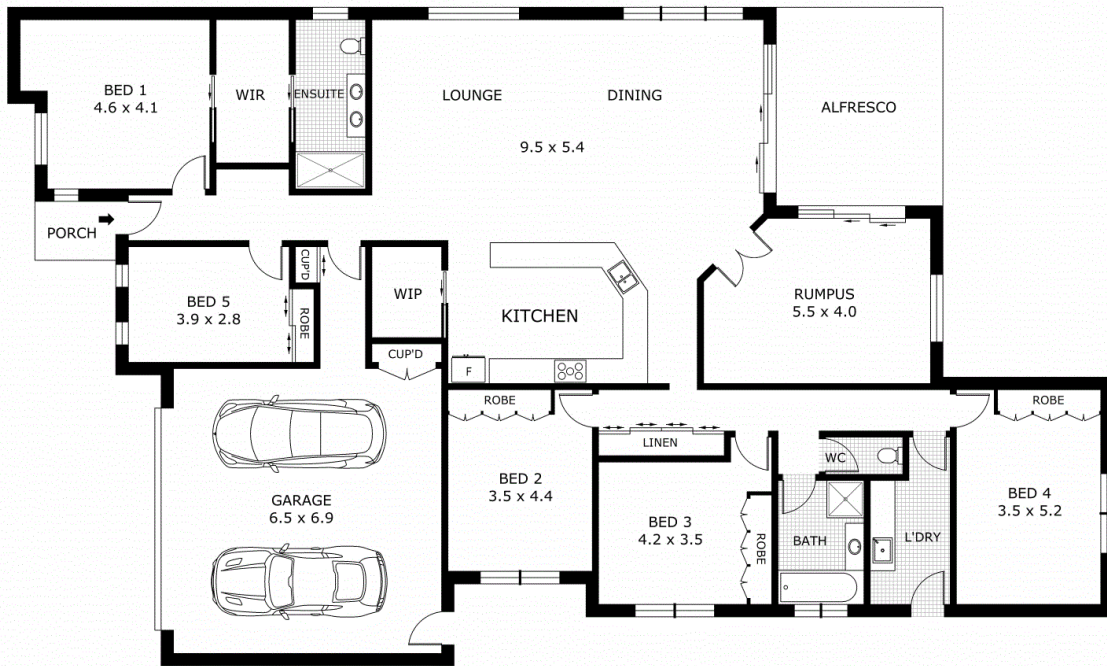
LJ Hooker Broadford | Kilmore (03) 5784 2558

1629 Broadford Wandong Road, BROADFORD VIC 3658
broadford.ljhooker.com.au | broadford@ljhooker.com.au



Disclaimer: All information contained therein is gathered from relevant third parties sources. We cannot guarantee or give any warranty about the information provided. Interested parties must rely solely on their own enquiries.

LJ Hooker Broadford | Kilmore
(03) 5784 2558



Scale in metres. Indicative only. Dimensions are approximate. All information contained herein is gathered from sources we believe to be reliable. However we cannot guarantee its accuracy and interested parties should rely on their own enquiries.

Residence	- 230 m ²
Garage	- 50 m ²
Alfresco	- 19 m ²
Porch	- 3 m ²
Total	- 302 m²



6 Parkland Place, Broadford



LJ Hooker Broadford | Kilmore
(03) 5784 2558

Disclaimer: All information contained therein is gathered from relevant third parties sources. We cannot guarantee or give any warranty about the information provided. Interested parties must rely solely on their own enquiries.