

5 Rosie Drive, Broadford

Big, Beautiful and Built for Family Living

Set on an impressive 648 sqm allotment, this substantial five-bedroom residence delivers space, style and flexibility in equal measure: perfectly suited to growing families who want room to spread out and enjoy both indoor and outdoor living.

At the heart of the home is a huge open plan kitchen, meals and living zone, designed for effortless entertaining and everyday family life. The kitchen is a true centrepiece, featuring an oversized island bench with stone benchtops, ample storage and a layout that brings everyone together. A separate second living area or theatre room offers the ideal retreat for movie nights, kids' space or quiet relaxation. Accommodation is generous, with five well-proportioned bedrooms, providing options for large families, guests or a home office setup. Completing the home is a two-car garage - with enough space to fit a golf buggy or workshop - and rear roller door access, ideal for trailers, additional vehicles or secure back yard access.

Step outside and be captivated by the stunning rear yard, beautifully enhanced with trellising roses lining the fence, creating a private and picturesque backdrop. The undercover alfresco area is perfect for year-round entertaining, while the back yard has been thoughtfully designed for families - featuring a cubby house, sandpit and established fruit trees, making it a true haven for children and pets

5 2 2

FOR SALE

Please Call

AGENTS

Sally Long
0477 437 281
sally.long@ljhooker.com.au

Gavin Henderson
0408 359 764
ghenderson.broadford@ljhooker.com.au

AGENCY

LJ Hooker Broadford | Kilmore
(03) 5784 2558

All information contained therein is gathered from relevant third parties sources. We cannot guarantee or give any warranty about the information provided. Interested parties must rely solely on their own enquiries.

LJ Hooker

alike.

A home of this size, quality and warmth is a rare offering - combining generous proportions, multiple living zones and an inviting outdoor environment in a location families love.

This is an exceptional opportunity to secure a big, beautiful family home in Broadford. For more information or to book a private inspection please contact Sally Long on 0477 437 281.

MORE DETAILS

Property ID	7VKHJS
Property Type	House
Land Area	648 m2
Including	Toilets (2)

Sally Long 0477 437 281

Licensed Real Estate Agent | sally.long@ljhooker.com.au

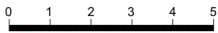
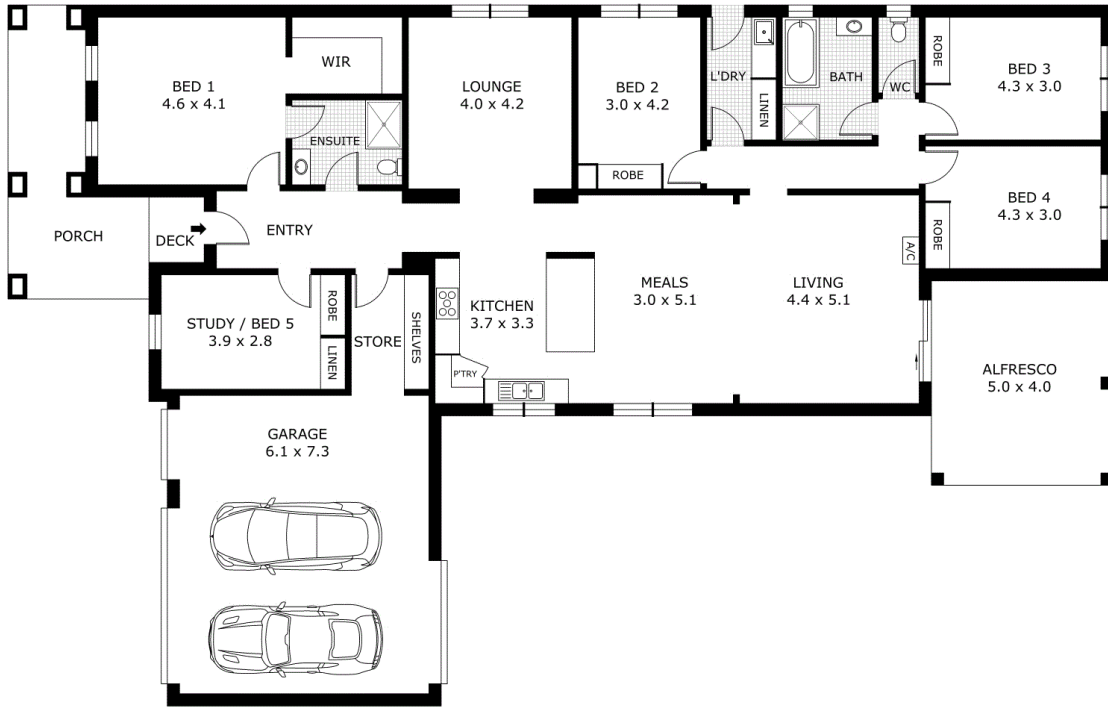
Gavin Henderson 0408 359 764

Principal | ghenderson.broadford@ljhooker.com.au

LJ Hooker Broadford | Kilmore (03) 5784 2558

1629 Broadford Wandong Road, BROADFORD VIC 3658
broadford.ljhooker.com.au | broadford@ljhooker.com.au





Scale in metres. Indicative only. Dimensions are approximate. All information contained herein is gathered from sources we believe to be reliable. However we cannot guarantee its accuracy and interested parties should rely on their own enquiries.

Residence	- 203.7 m ²
Porch	- 19.1 m ²
Alfresco	- 20.0 m ²
Garage	- 44.5 m ²
Total	- 287.3 m ²



5 Rosie Drive, Broadford

