

Broadford, 20 Yattarna Court

Welcome to Courtside Living!

This stunning 4-bedroom residence is your ticket to prestige in the sought-after Strath Lakes Estate. Boasting a master suite complete with a full ensuite, separate toilet and walk-in robe, along with 2700mm (9') ceilings throughout, this home exudes luxury at every turn.

The expansive family living area features large north-westerly windows, providing breathtaking views of the picturesque Tallarook Ranges. The solid timber kitchen is a chef's dream, equipped with ample bench space, storage, a dishwasher, and an 800mm stainless steel oven and hot plates.

Additional highlights include an oversized double garage with a remote roller door and internal access, a large separate lounge, and wide front and rear verandahs where you can unwind and soak in the tranquil surroundings.

Recently upgraded with a new coloured concrete driveway and fencing to both side boundaries, the property offers a fully fenced backyard, perfect for adding a shed, pool, or providing ample space for the kids to play. Situated on a spacious 1,480m² block with all

4

2

2

For Sale
Please Call

View
ljhooker.com.au/7GSHJS

Contact
Gavin Henderson
0408 359 764
ghenderson.broadford@ljhooker.com.au



Disclaimer: All information contained therein is gathered from relevant third parties sources. We cannot guarantee or give any warranty about the information provided. Interested parties must rely solely on their own enquiries.

LJ Hooker Broadford | Kilmore
(03) 5784 2558

services connected, this property offers the perfect blend of convenience and tranquillity. Just a minute's drive to the Hume Freeway, it's an ideal option for city commuters. Plus, with schools, shops, and the train station just a 4-minute drive away, everything you need is within easy reach.

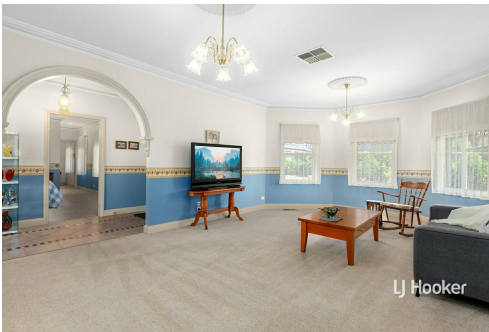
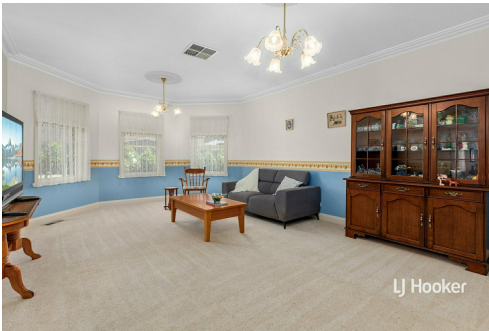
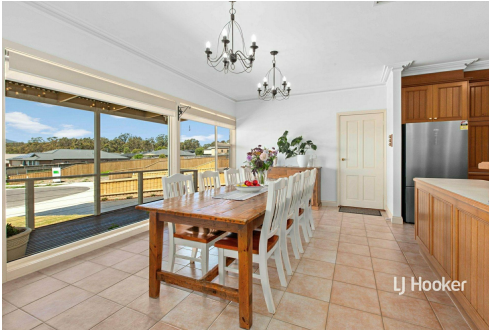
Don't miss out on this truly unique opportunity! Contact us today to arrange your inspection and make Courtside Living your reality. For more information, please call Gavin Henderson on 0408 359 764.

More About this Property

Property ID	7GSHJS
Property Type	House
Land Area	1480 m ²
Including	Toilets (2)

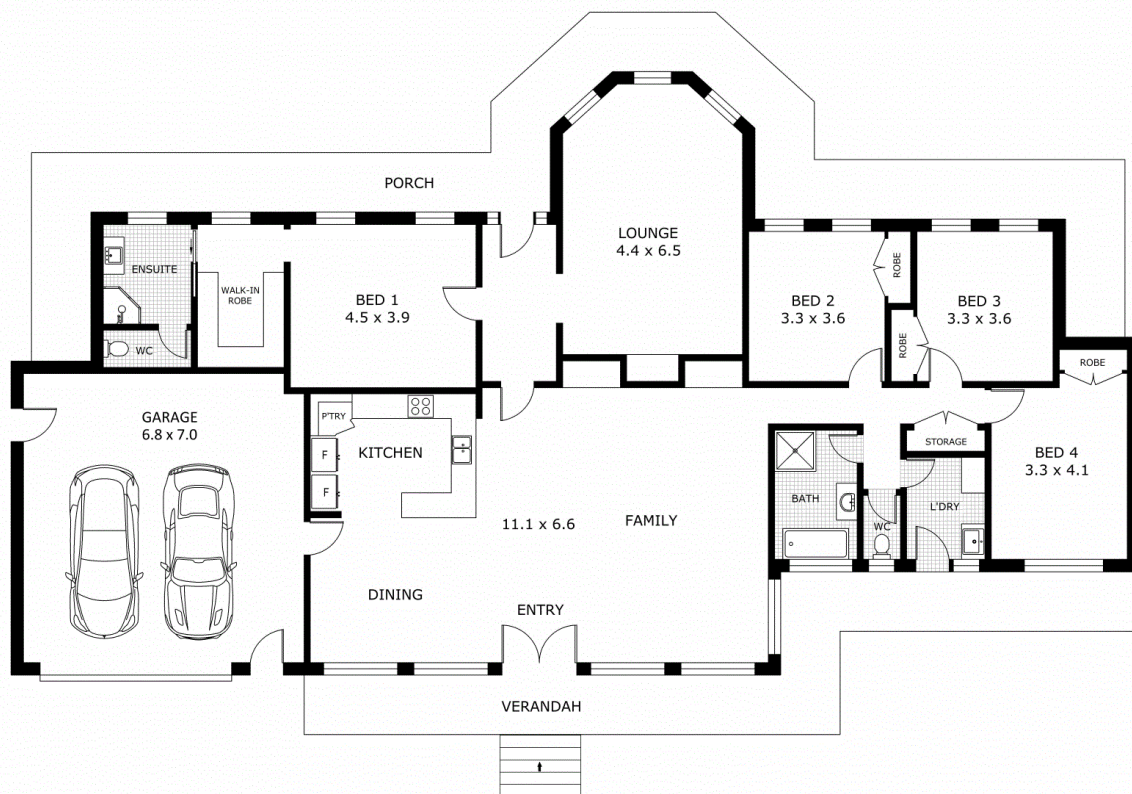
Gavin Henderson 0408 359 764
Principal | ghenderson.broadford@ljhooker.com.au

LJ Hooker Broadford | Kilmore (03) 5784 2558
1629 Broadford Wandong Road, BROADFORD VIC 3658
broadford.ljhooker.com.au | broadford@ljhooker.com.au



Disclaimer: All information contained therein is gathered from relevant third parties sources. We cannot guarantee or give any warranty about the information provided. Interested parties must rely solely on their own enquiries.

LJ Hooker Broadford | Kilmore
(03) 5784 2558



Scale in metres. Indicative only. Dimensions are approximate. All information contained herein is gathered from sources we believe to be reliable. However we cannot guarantee its accuracy and interested parties should rely on their own enquiries.

Residence	- 218.8m ²
Porch	- 53.4m ²
Verandah	- 32.7m ²
Garage	- 44.8m ²
Total	- 349.7m ²



20 Yattarna Court, Broadford



LJ Hooker Broadford | Kilmore
(03) 5784 2558

Disclaimer: All information contained therein is gathered from relevant third parties sources. We cannot guarantee or give any warranty about the information provided. Interested parties must rely solely on their own enquiries.