



14 Burges Lane, Broadford

A great first start or a place to settle

Beautifully updated and ready to move straight in, this solid 3-bedroom brick veneer home offers comfort, space and modern convenience on a generous 810 sqm (approx.).

The main bedroom features a private ensuite and walk-in robe, while the remaining bedrooms include built-in robes. A large lounge room with a cosy wood heater and split-system heating/cooling creates an inviting living space, complemented by a charming brick feature wall.

The central kitchen provides abundant bench space and storage, including a double-door pantry, and flows seamlessly into the meals/dining area. From here, step out to the huge undercover entertaining zone - perfect for year-round enjoyment.

The level, fully Colorbond-fenced back yard offers plenty of room for kids, pets, and future improvements, with double-gate access ideal for trailers, caravans, or additional vehicles.

Freshly updated with new carpets, fresh paint throughout, and brand-new remote-controlled ceiling fans with integrated lighting in every room, this home is the perfect start for a young family or an ideal downsizer seeking space, privacy and low-maintenance living.

Please contact Gavin Henderson on 0408 359 764 if you have any queries.

3 2 0

FOR SALE

Please Call

AGENTS

Gavin Henderson

0408 359 764

ghenderson.broadford@ljhooker.com.au

Sally Long

0477 437 281

sally.long@ljhooker.com.au

AGENCY

LJ Hooker Broadford | Kilmore

(03) 5784 2558

All information contained therein is gathered from relevant third parties sources. We cannot guarantee or give any warranty about the information provided. Interested parties must rely solely on their own enquiries.



MORE DETAILS

Property ID 7UMHJS
Property Type House
Land Area 810 m2
Including Toilets (2)

Gavin Henderson 0408 359 764

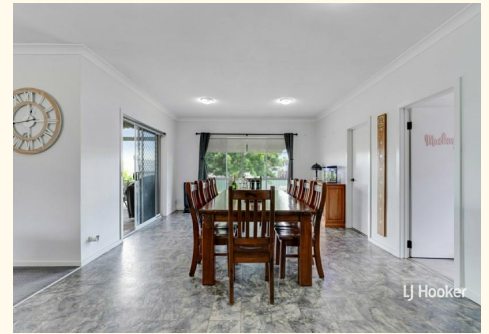
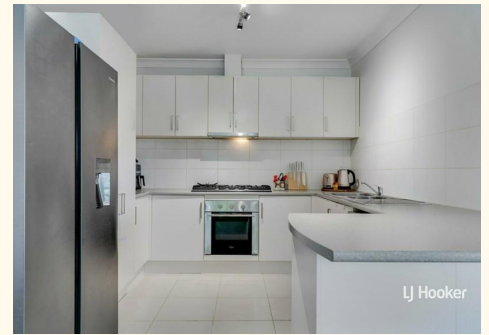
Principal | ghenderson.broadford@ljhooker.com.au

Sally Long 0477 437 281

Licensed Real Estate Agent | sally.long@ljhooker.com.au

LJ Hooker Broadford | Kilmore (03) 5784 2558

1629 Broadford Wandong Road, BROADFORD VIC 3658
broadford.ljhooker.com.au | broadford@ljhooker.com.au



All information contained therein is gathered from relevant third parties sources.
We cannot guarantee or give any warranty about the information provided.
Interested parties must rely solely on their own enquiries.



Scale in metres. Indicative only. Dimensions are approximate. All information contained herein is gathered from sources we believe to be reliable. However we cannot guarantee its accuracy and interested parties should rely on their own enquiries.

Residence	- 144 m ²
Patio	- 6 m ²
Alfresco	- 56 m ²
Total	- 206 m²



14 Burges Lane, Broadford



All information contained therein is gathered from relevant third parties sources.
 We cannot guarantee or give any warranty about the information provided.
 Interested parties must rely solely on their own enquiries.

