



Broadbeach, 201/4-6 Alexandra Avenue

Luxury Coastal Living in the Exclusive Mali Residences

Discover the epitome of luxury beachside living with this impeccably presented boutique apartment in the prestigious Mali Residences. Situated on the 2nd Level, this contemporary, architecturally designed residence offers an unrivalled coastal lifestyle just 100m from the golden sands of Mermaid Beach & Broadbeach.

Sophisticated Design with Coastal Elegance, step inside this light-filled apartment, where high ceilings, limestone flooring, and Tasmanian Ash joinery create an ambiance of warm elegance. The gourmet kitchen, adorned with a marble island and equipped with premium Miele appliances, seamlessly integrates with the open-plan living and dining area, leading to a spacious alfresco terrace to soak up the breathtaking sunrises and sunsets.

The master bedroom is a private retreat, complete with walk through built-in robes and the luxurious bathroom features high-end marble with timber finishes on the vanity and a tranquil rain shower. The functional European laundry is conveniently located with



Disclaimer: All information contained therein is gathered from relevant third parties sources. We cannot guarantee or give any warranty about the information provided. Interested parties must rely solely on their own enquiries.



For Sale
\$825,000

View
ljhooker.com.au/P5NHHD

Contact
Matt Conduit
0418 741 949
matt.conduit@ljhooker.com.au
Nicole Driscoll
0401 005 648
nicole.driscoll@ljhooker.com.au

LJ Hooker Broadbeach
(07) 5531 6688

additional storage. The apartment includes a secure car space on the ground floor.

Exclusive Residents Facilities and Amenities Level.

Mali Residences boasts an exclusive selection of resort-style amenities, ensuring a life of relaxation and indulgence:

- Infinity Lap Pool with dedicated sun lounge area
- Fully Equipped Gymnasium with ocean views
- Sauna for ultimate relaxation
- Exclusive Lounge & Dining Area with a full kitchen, bar, and wine cellar
- Entertaining Spaces perfect for hosting guests

Prime Location —Walk to Everything!

Enjoy the best of Broadbeach and Mermaid Beach at your doorstep. Leave the car behind and walk to pristine beaches, Kurrawa park, award winning restaurants and cafes, medical facilities, and the ultimate Pacific Fair shopping and Broadbeach entertainment precinct.

This is a Rare Opportunity not to be missed as it won't not last long! Arrange your private inspection today —your luxury beachside sanctuary awaits!

More About this Property

Property ID	P5NHHD
Property Type	Apartment
House Size	138 m2
Land Area	138 m2

Matt Conduit 0418 741 949

Director / Licensee | matt.conduit@ljhooker.com.au

Nicole Driscoll 0401 005 648

Sales Executive | nicole.driscoll@ljhooker.com.au

LJ Hooker Broadbeach (07) 5531 6688

Shop 14, 90-104 Surf Parade, BROADBEACH QLD 4218

broadbeach.ljhooker.com.au | sales.broadbeach@ljhooker.com.au

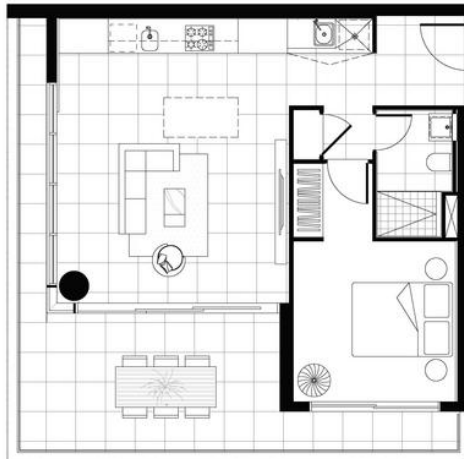


Disclaimer: All information contained therein is gathered from relevant third parties sources. We cannot guarantee or give any warranty about the information provided. Interested parties must rely solely on their own enquiries.

LJ Hooker Broadbeach
(07) 5531 6688



MALI



E1

LEVEL 2

1 BEDROOM
1 BATHROOM
1 CAR SPACE

INTERNAL
BALCONY
TOTAL AREA

58m²

25m²

83m²



All images, views and diagrams are indicative or artist impressions only. Dimensions, areas, listings, specifications, landscape and paved areas are indicative and subject to change without notice. Furniture and fittings are not included in the price. Floor area is an estimate only, measured to the outside face of all external enclosing walls and to the external face of all corridor walls and to the inner face of all shared walls. All area calculations are based on the Property Council of Australia method of measurement guidelines. Purchasers are to be aware of the air conditioned systems and fixtures around the building. Purchasers should first, the plan, elevations and specifications included in the terms of sale carefully prior to signing the contract.