

Broadbeach

7-9 Surf Parade, BROADBEACH


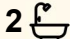

Luxury Coastal Residence in Exclusive Boutique Development

Introducing The Eveleigh Broadbeach - a boutique collection of refined residences where architecture, wellness, and coastal sophistication unite in perfect harmony.

Rising elegantly above Surf Parade, The Eveleigh is a striking new landmark by renowned developers Hirsch & Faigen, designed in collaboration with award-winning architects Rothelowman. Sculptural in form and timeless in expression, this exclusive address captures the beauty of Broadbeach living through curated design, breathtaking outlooks, and exceptional amenity.

Inside, these spacious 3-bedroom residences have been thoughtfully composed to maximise natural light and uninterrupted views of the Ocean, city skyline, and hinterland beyond. Floor-to-ceiling glazing draws the horizon into your home, while warm timber finishes, natural stone surfaces, premium European appliances, and bespoke detailing create interiors of understated luxury and calm refinement.

Beyond your private sanctuary, The Eveleigh delivers a resort-inspired lifestyle immersed in wellness and relaxation. Residents will enjoy a sunlit podium pool terrace, yoga garden, private gymnasium, sauna,

3  2  2 

FOR SALE
\$2,900,000

VIEW
By Appointment

AGENTS
Matt Conduit
0418 741 949
matt.conduit@ljhooker.com.au

AGENCY
LJ Hooker Broadbeach
(07) 5531 6688

All information contained therein is gathered from relevant third parties sources.
We cannot guarantee or give any warranty about the information provided.
Interested parties must rely solely on their own enquiries.

 **LJ Hooker**

and tranquil subtropical landscaping designed to restore balance from dawn to dusk. Elevated rooftop entertaining spaces offer panoramic ocean views, beautifully appointed dining areas, and sophisticated lounges for sunset gatherings and effortless hosting.

Perfectly positioned in the heart of Broadbeach, The Eveleigh places the very best of the Gold Coast within walking distance - from Kurrawa Beach and Pacific Fair to Oracle Boulevard dining, boutique shopping, cafés, galleries, and vibrant nightlife.

This is more than a residence - it is a statement in modern coastal living, sophisticated yet serene, connected yet private. The Eveleigh offers a rare opportunity to experience life elevated above the ordinary.

Call to receive further information on this well priced ocean facing asset and inspect today.

MORE DETAILS

Property ID	PDDHHD
Property Type	Apartment

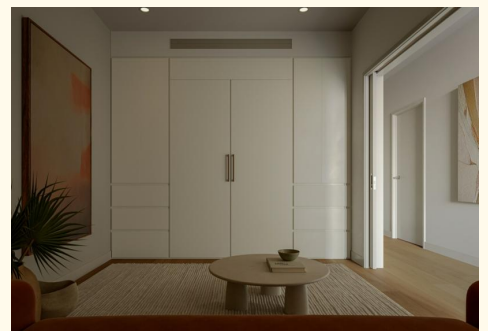
Matt Conduit 0418 741 949

Director | matt.conduit@ljhooker.com.au

LJ Hooker Broadbeach (07) 5531 6688

Shop 14, 90-104 Surf Parade, BROADBEACH QLD 4218

broadbeach.ljhooker.com.au | sales.broadbeach@ljhooker.com.au



All information contained therein is gathered from relevant third parties sources.
We cannot guarantee or give any warranty about the information provided.
Interested parties must rely solely on their own enquiries.

