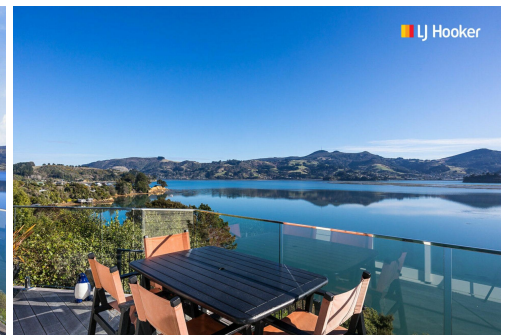


SOLD



Broad Bay, A/35 Oxley Crescent

Waterfront Stunner - A Haven For Downsizers

Sitting proudly in a waterfront position, this gorgeous modern property, built in 2017, offers the perfect blend of luxury and comfort. All on one level, making this property an excellent choice if you are thinking of downsizing and want to simplify your lifestyle. With two bedrooms, one elegantly designed bathroom, a second separate toilet and the kitchen, dining and lounge are all open plan. From almost every angle in the living spaces, the views of the Otago harbour and hills beyond are breathtaking. Internal access to a double garage and storage, plus additional off street parking complete this desirable modern home.

One of the property's standout features is its unobstructed water views, allowing you to enjoy spectacular vistas and the serenity of the waterfront position from the comfort of your home. The abundance of natural light streaming through large windows bathes the interiors in sunshine, creating a warm and inviting atmosphere throughout the day. A wrap around sundeck at the rear of the home, provides additional outdoor space to entertain family and friends all year round.

2 

1 

2 

For Sale
\$760,000

View
ljhooker.co.nz/3NHBGDS

Contact
Geraldine Hermens
027 473 0922
Geraldine@ljhdunedin.co.nz

Amelia Hermens
022 415 2359
amelia@ljhdunedin.co.nz

For outdoor enthusiasts, easy access to the peninsula cycleway offers a fantastic opportunity for leisurely rides and scenic walks.

This contemporary waterfront gem combines modern living with natural beauty, making it an ideal retreat for those seeking both tranquility and convenience.

Motivated sellers are ready to hand the keys over to the next lucky owner. Put yourself first in line and secure this affordable modern home on the Peninsula.

More About this Property

Property ID	3NHBGDS
Property Type	House
Land Area	690 m ²
Licensed Real Estate Agents (REAA2008)	

Geraldine Hermens 027 473 0922

Licensee | Geraldine@ljhdunedin.co.nz

Amelia Hermens 022 415 2359

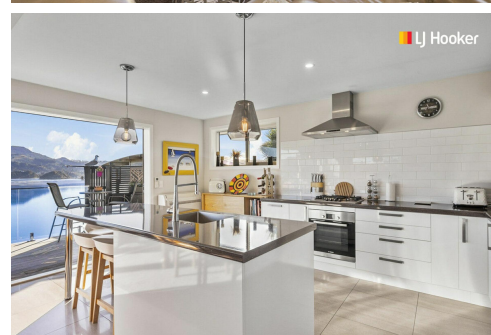
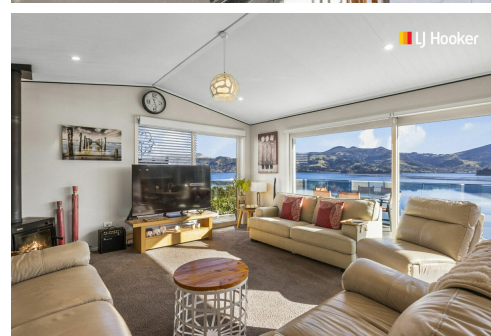
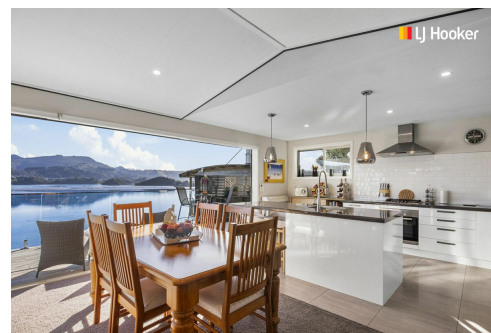
Licensee | amelia@ljhdunedin.co.nz

LJ Hooker Dunedin (03) 470 1370

Wayne Graham Realty Ltd

63 Musselburgh Rise, DUNEDIN 9013

dunedin.ljhooker.co.nz | dunedin@ljhdunedin.co.nz



Disclaimer: All information contained therein is gathered from relevant third parties sources.

We cannot guarantee or give any warranty about the information provided. Interested parties must rely solely on their own enquiries.

LJ Hooker Dunedin

(03) 470 1370

Wayne Graham Realty Ltd