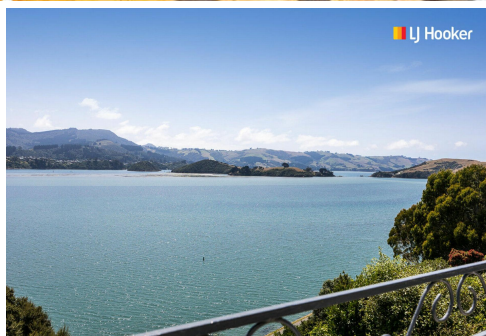




LJ Hooker



LJ Hooker



LJ Hooker

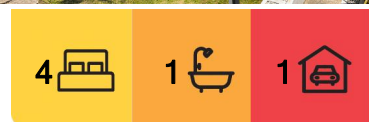


LJ Hooker

Broad Bay, 35 Oxley Crescent

Harbourside Serenity with Endless Possibilities

This charming coastal property, located in the highly sought-after Broad Bay suburb on the Peninsula, offers the perfect blend of relaxed seaside living and exciting potential. The home has been thoughtfully renovated to capture the essence of coastal living, with a light-filled interior and serene atmosphere that complements the stunning harbourside location. Featuring a large open living space, an additional and separate family room, four bedrooms, including a versatile day room/office and a generous basement area with ample potential for future development, this property is ideal for those seeking a peaceful retreat with room to grow. The breathtaking views of the harbour and the abundance of natural sunlight flooding through the space create a truly inviting environment. Set on a prime section, this quaint yet expansive property offers the option to enjoy as-is or explore the exciting possibilities for further development. Whether you choose to enhance the existing layout or build up to fully capitalise on the views, the potential is limitless. Experience the ultimate lifestyle with a property that combines coastal charm, breathtaking scenery, and endless opportunities for personalisation.



For Sale
Enquiries Over \$600,000

View
By Appointment

Contact
Geraldine Hermens
027 473 0922
Geraldine@ljhdunedin.co.nz

Amelia Hermens
022 415 2359
amelia@ljhdunedin.co.nz

LJ Hooker

Disclaimer: All information contained therein is gathered from relevant third parties sources. We cannot guarantee or give any warranty about the information provided. Interested parties must rely solely on their own enquiries.

LJ Hooker Dunedin
(03) 470 1370
Wayne Graham Realty Ltd

After 15 years, our overseas owners are ready to sell.

More About this Property

Property ID	3PESGDS
Property Type	House
Land Area	626 m ²
Licensed Real Estate Agents (REAA2008)	

Geraldine Hermens 027 473 0922

Licensee | Geraldine@ljhdunedin.co.nz

Amelia Hermens 022 415 2359

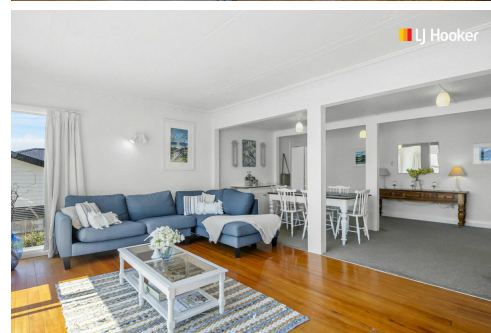
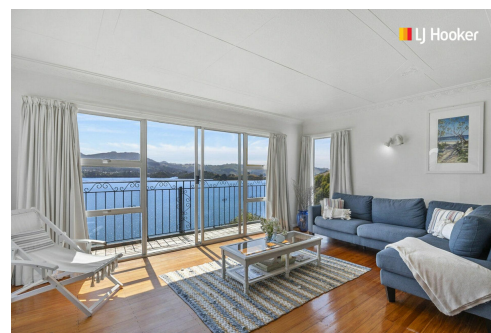
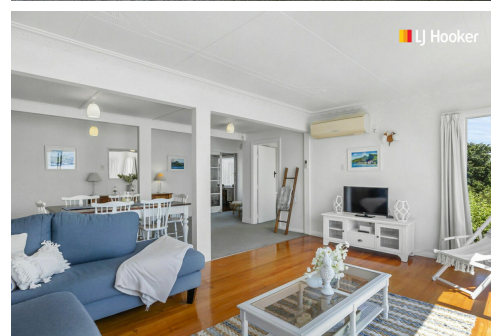
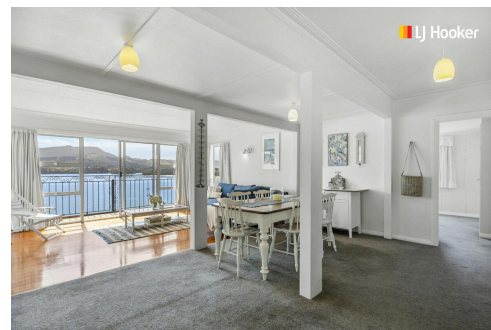
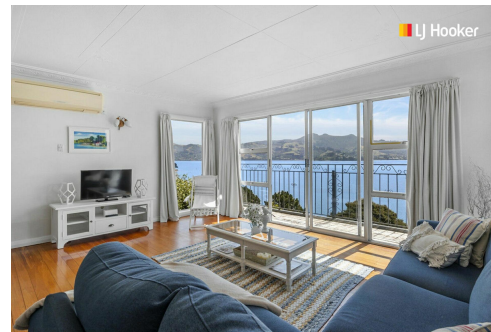
Licensee | amelia@ljhdunedin.co.nz

LJ Hooker Dunedin (03) 470 1370

Wayne Graham Realty Ltd

63 Musselburgh Rise, DUNEDIN 9013

dunedin.ljhooker.co.nz | dunedin@ljhdunedin.co.nz



Disclaimer: All information contained therein is gathered from relevant third parties sources. We cannot guarantee or give any warranty about the information provided. Interested parties must rely solely on their own enquiries.

LJ Hooker Dunedin
(03) 470 1370
Wayne Graham Realty Ltd