

## Bringelly, 108 Kelvin Park Drive

6.8 Acres In Future Metropolitan Centre

Attention all investors and entrepreneurs, presenting a rare opportunity of a 6.8 acre property in Bringelly, minutes to the new Nancy Bird Walton, Western Sydney Airport.

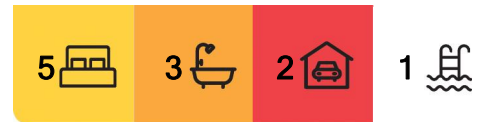
Positioned within the Aerotropolis Development Precinct, the Aerotropolis is a planned city surrounding the Western Sydney Airport, with a goal to drive economic growth, create employment and attract investment within the region.

Property Facts include:

- Part mixed use zoning, incorporating Residential & Commercial
- 52.5m height limit
- 5 bedroom brick home
- Shed with stables & amenities



**Disclaimer:** All information contained therein is gathered from relevant third parties sources. We cannot guarantee or give any warranty about the information provided. Interested parties must rely solely on their own enquiries.



**For Sale**

Property Showcase

**View**

By Appointment

**Contact**

**Anthony Bucca**

0418 972 882

abuCCA.leppington@ljhooker.com.au

**Michael Cavagnino**

0418 166 149

mcavagnino.leppington@ljhooker.com.au

**LJ Hooker Leppington | Austral**  
**(02) 9606 4311**

- In-ground swimming pool & fenced yards
- Approximate rental return of \$1,200 per week

With the airport due to be operational by 2026, this is an ideal opportunity to purchase a significant land holding within the booming South West.

Disclaimer: The above information has been furnished to LJ Hooker Leppington | Austral by the vendor/vendors legal representative. We have not verified whether or not that information is accurate, and do not have any belief one way or the other in its accuracy. LJ Hooker Leppington | Austral do not accept any responsibility to any person for its accuracy and do no more than pass it on. All interested parties should make and rely upon their own enquiries in order to determine whether or not this information is, in fact, accurate.

## More About this Property

<b>Property ID</b>	YD6HCV
<b>Property Type</b>	House
<b>Land Area</b>	6.8 acre
<b>Including</b>	Pool

### Anthony Bucca

Sales Manager | [abucca.leppington@ljhooker.com.au](mailto:abucca.leppington@ljhooker.com.au)

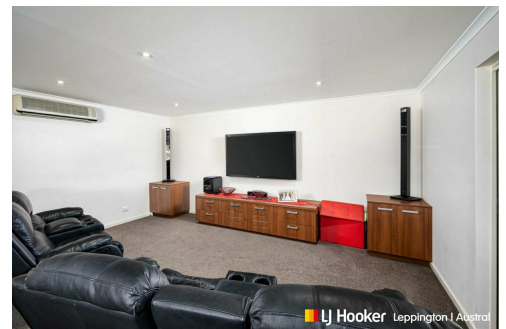
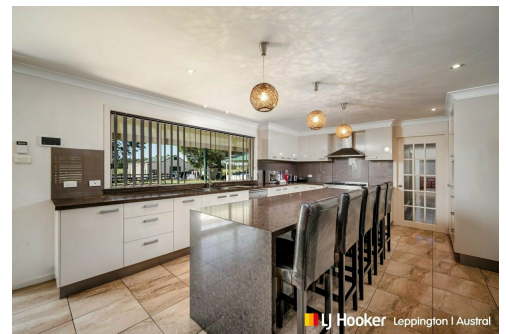
### Michael Cavagnino

Licensee | [mcavagnino.leppington@ljhooker.com.au](mailto:mcavagnino.leppington@ljhooker.com.au)

### LJ Hooker Leppington | Austral (02) 9606 4311

1393 Camden Valley Way, LEPPINGTON NSW 2179

[leppington.ljhooker.com.au](http://leppington.ljhooker.com.au) | [leppington@ljhooker.com.au](mailto:leppington@ljhooker.com.au)



**LJ Hooker Leppington | Austral**  
**(02) 9606 4311**

**Disclaimer:** All information contained therein is gathered from relevant third parties sources. We cannot guarantee or give any warranty about the information provided. Interested parties must rely solely on their own enquiries.