



"Sussex Court"  
8/67 Kings Road, Brighton-Le-Sands

Sold



8/67 Kings Road, Brighton-Le-Sands

## Retro beach pad!

Positioned in a whisper quiet location and in a local landmark building known as "Sussex Court", be pleasantly surprised with the sun, space and value of this first floor classic unit.

A mid century modern feel is what captures you here with this bayside beauty.. 2 large bedrooms (main with built in robes), great size living room with long and wide balcony adjoining, a spacious kitchen and that classic retro bathroom completes the internal living.

There is also an extra large lock up garage (on a separate title) downstairs, access to share laundry facilities and all within a short stroll to shops, transport, beach and that wonderful bayside Brighton-Le-Sands shopping village.

2 🏠 1 🚿 1 🚗

**FOR SALE**  
\$749,000

### AGENTS

Joseph Galea  
0405 148 099  
josephg@ljhbbs.com.au

### AGENCY

LJ Hooker Brighton-Le-Sands  
(02) 9599 1511

All information contained therein is gathered from relevant third parties sources.  
We cannot guarantee or give any warranty about the information provided.  
Interested parties must rely solely on their own enquiries.

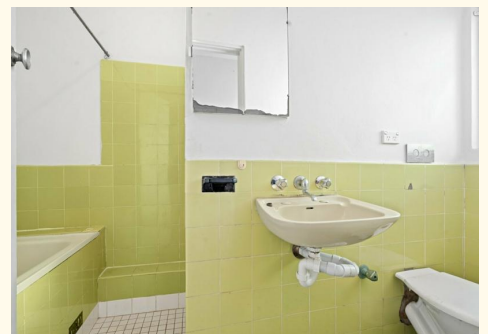


## MORE DETAILS

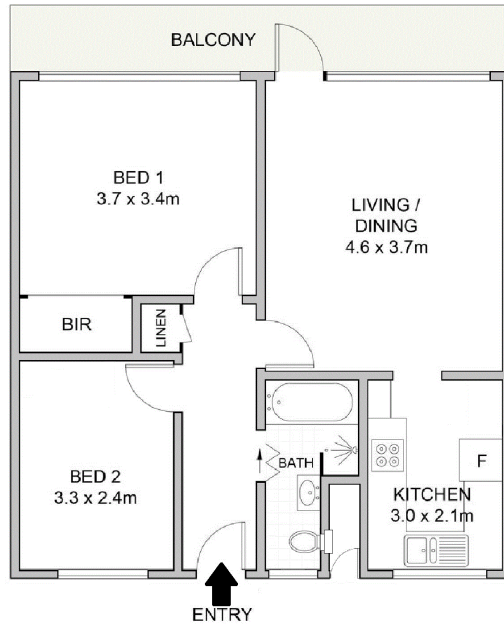
Property ID 13V0FNN  
Property Type Unit

**Joseph Galea 0405 148 099**  
Area Specialist | josephg@ljhbbs.com.au

**LJ Hooker Brighton-Le-Sands (02) 9599 1511**  
331 Bay Street, BRIGHTON-LE-SANDS NSW 2216  
brightonnsw.ljhooker.com.au | info@ljhbbs.com.au



All information contained therein is gathered from relevant third parties sources.  
We cannot guarantee or give any warranty about the information provided.  
Interested parties must rely solely on their own enquiries.



Internal unit size: 70.6sqm  
 Internal garage size: 21.4sqm  
 Total area (over 2 titles): 92sqm  
 Strata Levies:  
 Approx \$1,021 per quarter  
 Council Rates:  
 Approx \$373 per quarter  
 Water Rates:  
 Approx \$147 per quarter



## "Sussex Court" 8/67 Kings Road, Brighton-Le-Sands

Scale in metres. Indicative only. Dimensions are approximate. All information contained herein is gathered from sources we believe to be reliable. However, we cannot guarantee its accuracy and interested persons should rely on their own enquiries.