






14/18-20 Gordon Street, Brighton-Le-Sands

## Superb Position with Sunny Aspect

Enjoying a convenient, central location is this original top floor apartment with a sunny east facing position and in a location considered one of Brighton's best!

Light filled combined living and dining area, 2 bedrooms both with built in wardrobes this is a great opportunity to add your own flair and update the original kitchen and bathroom and create a wonderful first home or investment. The current tenants are on an expired lease. Perfect position easy level stroll to the supermarket, restaurants and cafes and leisurely strolls along the beach.

2  1  0 

**FOR SALE**  
Please Call

### AGENTS

Frank Mazor  
0419 272 251  
frankm@ljhbbs.com.au

Joseph Galea  
0405 148 099  
joegalea@ljhbbs.com.au

### AGENCY

LJ Hooker Brighton-Le-Sands  
(02) 9599 1511

All information contained therein is gathered from relevant third parties sources.  
We cannot guarantee or give any warranty about the information provided.  
Interested parties must rely solely on their own enquiries.

 **LJ Hooker**

## MORE DETAILS

Property ID 13SSFNN  
Property Type Unit

**Frank Mazor 0419 272 251**

Principal/ Licensee in Charge | [frankm@ljhbbs.com.au](mailto:frankm@ljhbbs.com.au)

**Joseph Galea 0405 148 099**

Area Specialist | [joegalea@ljhbbs.com.au](mailto:joegalea@ljhbbs.com.au)

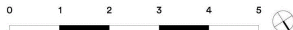
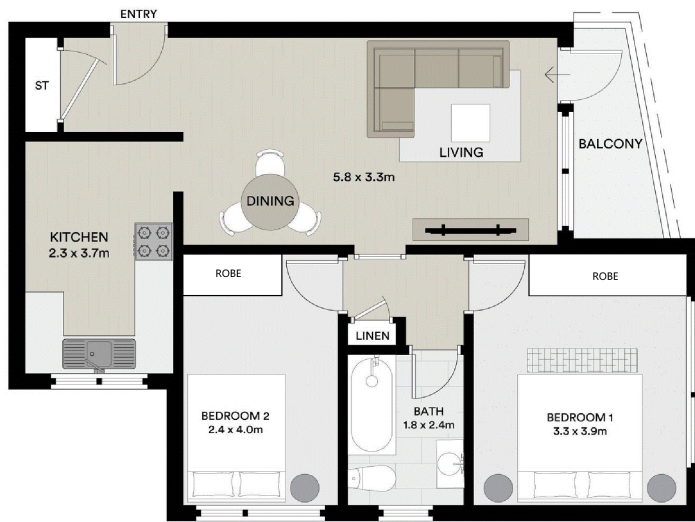
**LJ Hooker Brighton-Le-Sands (02) 9599 1511**

331 Bay Street, BRIGHTON-LE-SANDS NSW 2216  
[brightonnsw.ljhooker.com.au](http://brightonnsw.ljhooker.com.au) | [info@ljhbbs.com.au](mailto:info@ljhbbs.com.au)



All information contained therein is gathered from relevant third parties sources.  
We cannot guarantee or give any warranty about the information provided.  
Interested parties must rely solely on their own enquiries.

"Thirlmere Gardens"  
14/18-20 Gordon Street  
Brighton-Le-Sands



All information contained in this document is from sources we believe to be accurate, however we cannot guarantee its accuracy. Interested persons should make and rely on their own enquiries in relation to measurements, dimensions, layout, furniture and descriptions.

Internal unit size:  
72.5sqm

Strata Levies:  
\$1,226.25 per quarter

Sydney Water Rates:  
\$204.13 per quarter

Bayside Council rates:  
\$442.80 per quarter

 **LJ Hooker**  
Brighton-Le-Sands