



5 Reading Road, Brighton-Le-Sands

4 2 2

Location with Duplex Potential

Offered in one of Brighton-Le-Sands most sought after locations for family living is this solid full brick family home being offered for the first time in over 50 years.

With a fantastic block of land and a North East aspect and stretching approx 15.24m wide and a depth of approx 45.72m allowing duplex redevelopment (S.T.C.A), granny flats, new home site or renovation of the existing home, live in and capitalise on the existing footprint and create a masterpiece or develop to suit your needs.

The location boasts a quiet tree lined street, transport at the door to Rockdale Station via Brighton beach & shops, catchment for Brighton-Le-Sands, Kyeemagh, St Thomas Moore & Cairnsfoot primary schools.

This is that once in a lifetime opportunity... dont miss out!

FOR SALE
Please Call

AGENTS

Frank Mazor
0419 272 251
frankm@ljhbbs.com.au

Joseph Galea
0405 148 099
joegalea@ljhbbs.com.au

AGENCY

LJ Hooker Brighton-Le-Sands
(02) 9599 1511

All information contained therein is gathered from relevant third parties sources.
We cannot guarantee or give any warranty about the information provided.
Interested parties must rely solely on their own enquiries.

LJ Hooker

MORE DETAILS

Property ID 13R2FNN
Property Type House
Land Area 696 m2
Including Air Conditioning
Toilets (2)
Balcony
Dishwasher
Outdoor Entertaining
Workshop
Built-in-Robes
Secure Parking
Fully Fenced
duplexd site
redevelopment potential
best location
North East Aspect

Frank Mazor 0419 272 251

Principal/ Licensee in Charge | frankm@ljhbls.com.au

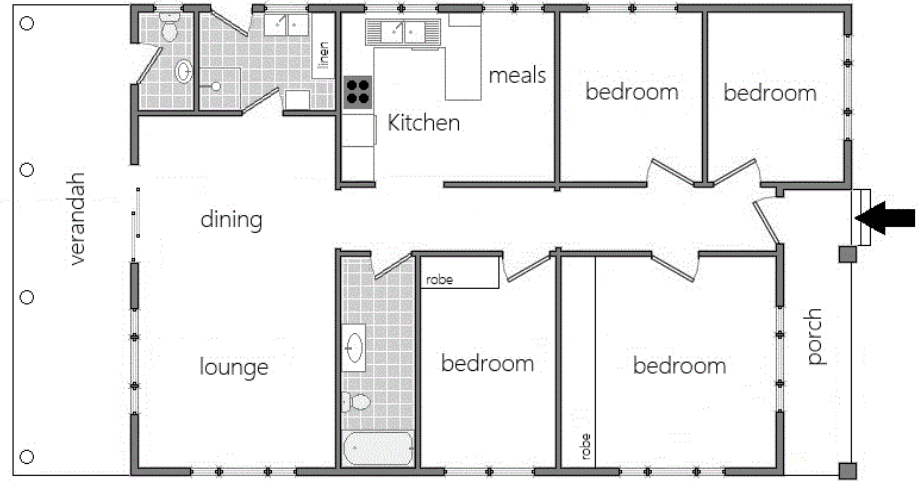
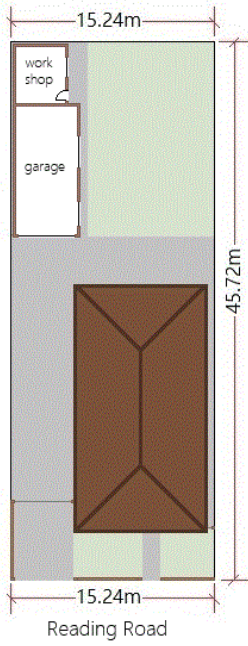
Joseph Galea 0405 148 099

Area Specialist | joegalea@ljhbls.com.au

LJ Hooker Brighton-Le-Sands (02) 9599 1511

331 Bay Street, BRIGHTON-LE-SANDS NSW 2216
brightonnsw.ljhooker.com.au | info@ljhbls.com.au





Total land
area
696sqm

5 Reading Road, Brighton-Le-Sands



This diagram is for illustrative purpose only. All reasonable care has been taken in the preparation, but no warranty is given as to the accuracy of the information. This document does not constitute any part of any offer or contract. Dimensions shown are approximate only. Prospective purchasers must rely on their own enquiries.