

Brighton-Le-Sands, 17 Roslyn Avenue

The Dream Starts Here

Perfectly positioned on a corner block a few streets from the beach is this classic Art Deco style home with rear lane access to two car garage. Well presented as is with timeless features including high ornate ceilings, stained glass windows and timber floors with scope to further update to your own requirements. This full brick family home accommodates 2 bedrooms, separate living and dining areas, updated kitchen and bathroom and internal laundry. Explore the potential to capitalise on its prized corner position and recreate/renovate or knock-down and rebuild a brand new family home (STCA) the possibilities are endless. Easy level walk to the beach, parks, local schools, shops and restaurants.

2

2

2

For Sale
Please Call

View
ljhooker.com.au/13FBFNN

Contact
Joseph Galea
0405 148 099
joegalea@ljhbbs.com.au



Disclaimer: All information contained therein is gathered from relevant third parties sources. We cannot guarantee or give any warranty about the information provided. Interested parties must rely solely on their own enquiries.

LJ Hooker Brighton-Le-Sands
(02) 9599 1511

More About this Property

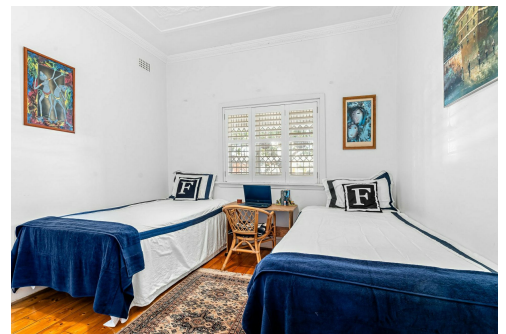
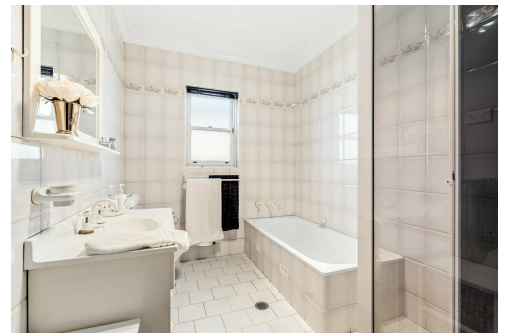
| | |
|---------------|--|
| Property ID | 13FBFNN |
| Property Type | House |
| Including | Outdoor Entertaining Built-in-Robes Fully Fenced |

Joseph Galea 0405 148 099

Licensed Real Estate Agent | joegalea@ljhbbs.com.au

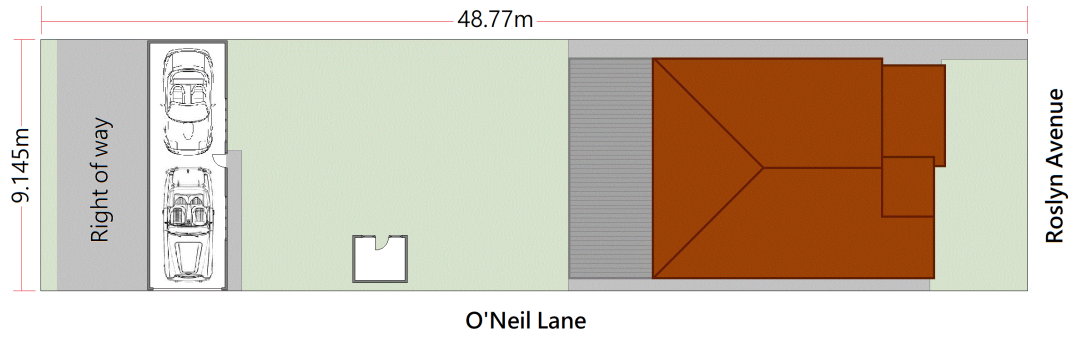
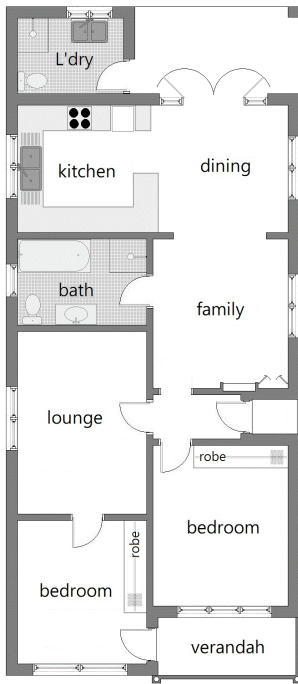
LJ Hooker Brighton-Le-Sands (02) 9599 1511

331 Bay Street, BRIGHTON-LE-SANDS NSW 2216
brightonnsw.ljhooker.com.au | info@ljhbbs.com.au



Disclaimer: All information contained therein is gathered from relevant third parties sources.
We cannot guarantee or give any warranty about the information provided. Interested parties must rely solely on their own enquiries.

**LJ Hooker Brighton-Le-Sands
(02) 9599 1511**



Land area
442.6sqm (approx)

17 Roslyn Avenue
Brighton-Le-Sands



All information contained in this document is from sources we believe to be accurate, however we cannot guarantee its accuracy.
Interested persons should make and rely on their own enquiries in relation to measurements, dimensions, layout, furniture and descriptions.