

19 Sayre Crescent, Boyne Island

CHARMING ELEVATED HOME WITH AMAZING MOUNTAIN VIEWS

Nestled at the pinnacle of Sayre Crescent, this property offers breathtaking views of the township and majestic mountains. While the home may require a bit of TLC, it is ready to be lived in and cherished. The Home Features:

- 3 Bedrooms: Two with built-in robes and one equipped with air conditioning for your comfort.
- Way Bathroom: Conveniently adjoining the master bedroom.
- Open Plan Living: Enjoy the airy ambiance created by feature raked ceilings.
- Modern Kitchen: Spacious and designed for both functionality and style.
- Large Rear Deck: Perfect for entertaining, boasting an exceptional mountain outlook.
- Electric Hot Water System: Ensuring your comfort and convenience.

The Property:

- Generous 620m² Block:
- Gently sloping and fully fenced, providing both space and privacy.

3 1 0

FOR SALE

Offers Over \$580,000

VIEW

By Appointment

AGENTS

Cheryl Kurtz

0408 988 093

ckurtz.boynetannum@ljhooker.com.au

AGENCY

LJ Hooker Boyne | Tannum

(07) 4973 7277

All information contained therein is gathered from relevant third parties sources. We cannot guarantee or give any warranty about the information provided. Interested parties must rely solely on their own enquiries.



PLEASE NOTE: This property is tenanted at \$460 per week. A minimum of 48hrs Notice is required for any viewings.

MORE DETAILS

Property ID	ATJ1W
Property Type	House
Land Area	620 m2
Including	Air Conditioning Deck Outdoor Entertaining Built-in-Robes

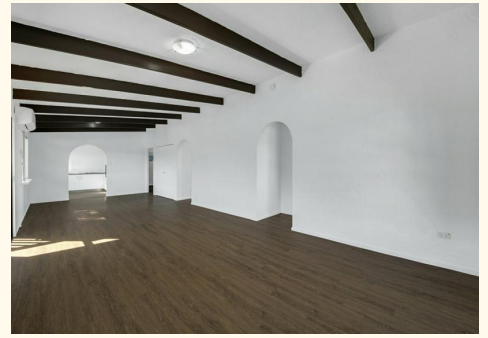
Cheryl Kurtz 0408 988 093

Sales Agent | ckurtz.boynetannum@ljhooker.com.au

LJ Hooker Boyne | Tannum (07) 4973 7277

Tannum Arcade, 1 Garnet Road & Hampton Drive, TANNUM SANDS
QLD 4680

boynetannum.ljhooker.com.au/ |
admin.boynetannum@ljhooker.com.au



All information contained therein is gathered from relevant third parties sources.
We cannot guarantee or give any warranty about the information provided.
Interested parties must rely solely on their own enquiries.

 **LJ Hooker**