

Bowen, 132 Oceanview Dr

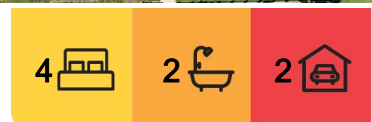
STUNNING HOME AT WHITSUNDAY PARADISE

Boasting an array of sleek finishes and a thoughtful open plan layout, this stunning 4 bedroom, 2 bathroom home is in showroom condition. From the welcoming foyer, the home flows into a spacious lounge area to the open concept dining and kitchen area. The bright, richly-appointed kitchen, along with a spectacular dining area, forms the heart of the home. With a wall of windows and sliding glass doors to a secluded patio, your family will enjoy this space, whether dining in or eating alfresco.

The parents retreat is truly a delightful space. The master bedroom is expansive and has doors out to the patio. It features a roomy walk through wardrobe and the ensuite is equal to that of a five star resort. Built for sharing, there are two showerheads, two sinks in the long vanity and two mirrors. Located at one end of the home, with the other bedrooms at the other end, offers Mom and Dad a



Disclaimer: All information contained therein is gathered from relevant third parties sources. We cannot guarantee or give any warranty about the information provided. Interested parties must rely solely on their own enquiries.



For Sale

Please Call

View

ljhooker.com.au/3D200F23

Contact

Bonnie Kohlhase

0414 339 081

bonnie.kohlhase@ljhbowen.com.au

LJ Hooker Bowen
(07) 4786 2000

private space to enjoy. There are three more roomy bedrooms all with built ins. The master bathroom is also family friendly with the vanity seperate from the shower and bath.

The quality fittings continue throughout the home. Timber louvered windows invite the cool sea breezes to flow through the home. It is also fully air conditioned for added comfort. Lovely floor tiles grace the floors from the spacious living areas to the bedrooms through to the patio. A double remote garage completes the home.

A big two bay shed offers plenty of space for parking and storage. With a fully fenced, landscaped back yard the security of kids and pets is ensured. There are no back neighbours and the block can be accessed from the rear. Located in Whitsunday Paradise Estate, only a few minutes out of Bowen, there is a bus service, parklands and a quiet seaside lifestyle for your family.

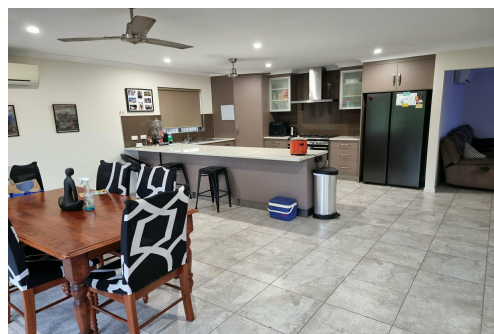
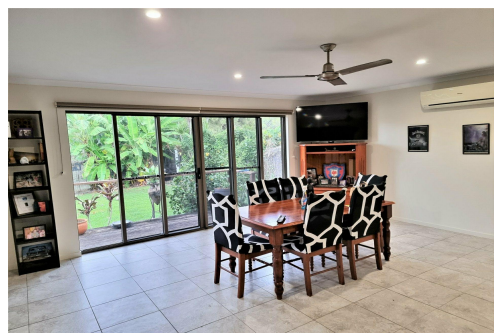
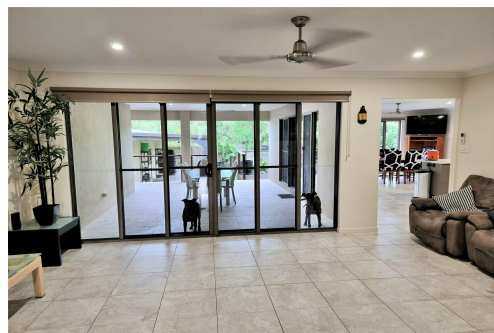
Make sure you book some time to view this stunning family home, you will not be disappointed!

More About this Property

Property ID	3D200F23
Property Type	House
Including	<div> <div>Ensuite</div> <div>Air Conditioning</div> <div>Dishwasher</div> <div>Built-in-Robes</div> <div>Remote Garage</div> </div>

Bonnie Kohlhase 0414 339 081
Sales Consultant | bonnie.kohlhase@ljhb Bowen.com.au

LJ Hooker Bowen (07) 4786 2000
1-36 Powell Street, BOWEN QLD 4805
bowen.ljhooker.com.au | bowen@ljhb Bowen.com.au



Disclaimer: All information contained therein is gathered from relevant third parties sources. We cannot guarantee or give any warranty about the information provided. Interested parties must rely solely on their own enquiries.

LJ Hooker Bowen
(07) 4786 2000