

Bowen, 1 Sapphire Crescent

GOOD BUY IN WHITSUNDAY PARADISE ESTATE

Situated on a corner block, this spacious family home offers an abundance of living space. From the spacious open plan living area to the adjoining dining area and well appointed kitchen, you'll enjoy the wide open spaces. The u-shaped kitchen features loads of bench space, drawers and a dishwasher.

The house offers four roomy bedrooms with a large built in wardrobe in each and an ensuite to the master bedroom. The bedrooms are carpeted and the main living area is tiled for easy maintenance. There are ceiling fans through and air conditioning in the master bedroom and living area.

There's a good sized patio area where you can enjoy eating al fresco or relaxing with a cool drink while the kids and pets frolic in the fully fenced back yard. There is side access as well, through double gates. Double garage provides you with plenty of undercover parking.



Disclaimer: All information contained therein is gathered from relevant third parties sources. We cannot guarantee or give any warranty about the information provided. Interested parties must rely solely on their own enquiries.

4 2 2

For Sale
Please Call _____

View
ljhooker.com.au/3D26ZF23

Contact
Bonnie Kohlhase
0414 339 081
bonnie.kohlhase@ljhbowen.com.au

LJ Hooker Bowen
(07) 4786 2000

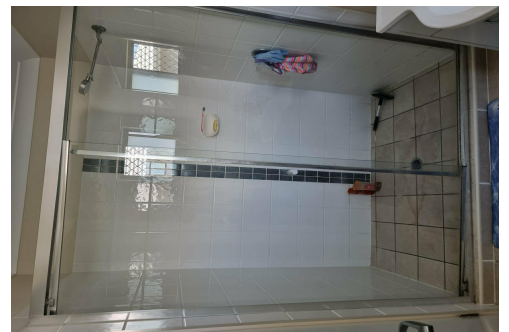
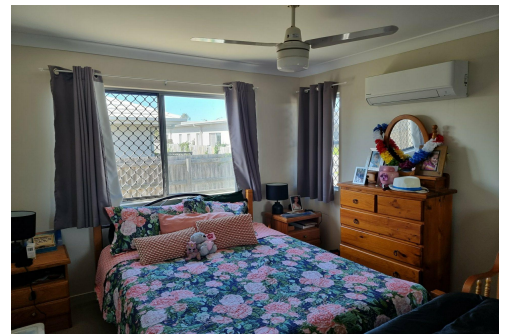
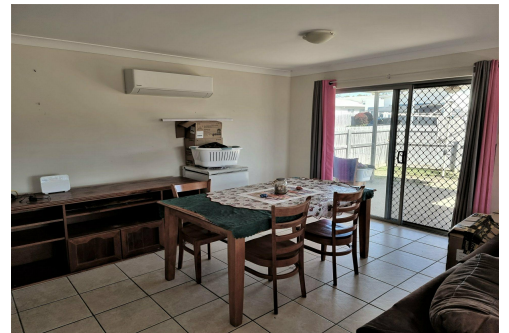
Good buying at Whitsunday Paradise Estate.

More About this Property

Property ID	3D26ZF23
Property Type	House
Including	Ensuite Air Conditioning Dishwasher Outdoor Entertaining Built-in-Robes Fully Fenced

Bonnie Kohlhase 0414 339 081
Sales Consultant | bonnie.kohlhase@ljhbowen.com.au

LJ Hooker Bowen (07) 4786 2000
1-36 Powell Street, BOWEN QLD 4805
bowen.ljhooker.com.au | bowen@ljhbowen.com.au



LJ Hooker Bowen
(07) 4786 2000

Disclaimer: All information contained therein is gathered from relevant third parties sources. We cannot guarantee or give any warranty about the information provided. Interested parties must rely solely on their own enquiries.