

Botanic Ridge, 15 Stringleaf Street

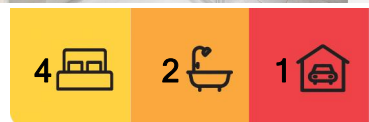
Incredible Opportunity for Modern Living in Botanic Ridge

The Property

Welcome to 15 Stringleaf Street, Botanic Ridge. Experience modern living in this beautifully designed four-bedroom home, ideally situated in the sought-after Botanic Ridge community. A perfect blend of style and comfort, this home offers a lifestyle of convenience, with easy access to lush parks, reputable schools, and local amenities, making it an exceptional choice for family living.

The Point of Difference

- This beautifully designed home boasts an open-plan layout, offering a warm, inviting space perfect for both relaxed family moments and seamless entertaining.
- This home features four spacious bedrooms, including a master suite with a walk-in robe and ensuite. The remaining bedrooms offer built-in robes and easy access to the modern main bathroom.
- Stunning kitchen with premium appliances, gas cooktop, oven, dishwasher, spacious



For Sale
\$590,000 - \$630,000

View
ljhooker.com.au/2FX3HGH

Contact
Mac Naidoo
0452 516 565
mac.naidoo@ljhooker.com.au

Mary Jamal
0451 145 598
mary.jamal@ljhooker.com.au



LJ Hooker Point Cook
(03) 9975 7080

Disclaimer: All information contained therein is gathered from relevant third parties sources. We cannot guarantee or give any warranty about the information provided. Interested parties must rely solely on their own enquiries.

pantry, and stylish subway splashback

- Set on approximately 294m², this property offers a generous, fully fenced backyard with a handy shed for extra outdoor storage.

- Additional highlights include a single-car garage with internal access, split-system heating and cooling in the living area, a separate laundry, and quality finishes throughout.

The Point of Interest

Set in the heart of the highly sought-after Botanic Ridge, this home offers the perfect blend of convenience and lifestyle. Families will appreciate the close proximity to top schools, including Botanic Ridge Primary, Lighthouse Christian College, and Casey Grammar School. Outdoor enthusiasts will have easy access to lush parks and nature reserves like Homestead Park, Acacia Wetlands, and Riverwood Drive Reserve. With Coles Botanic Ridge and local dining options just minutes away, as well as early learning centres such as Bluebird Early Education and Eden Academy nearby, this location truly caters to every need.

Note. All stated dimensions are approximate only. Particulars given are for general information only and do not constitute any representation on the part of the vendor or agent. Any school zoning stated based on www.findmyschool.vic.gov.au as of 21/01/2025.

More About this Property

Property ID	2FX3HGH
Property Type	House

Mac Naidoo 0452 516 565

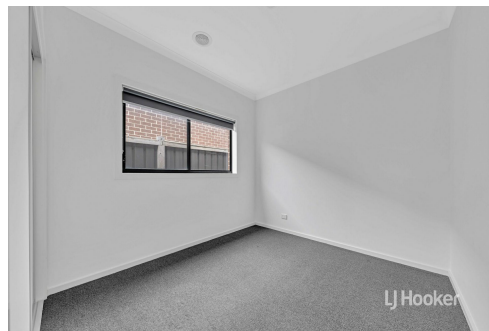
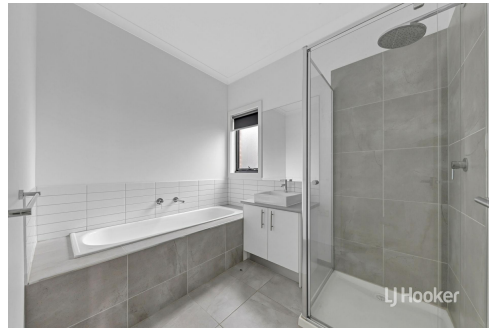
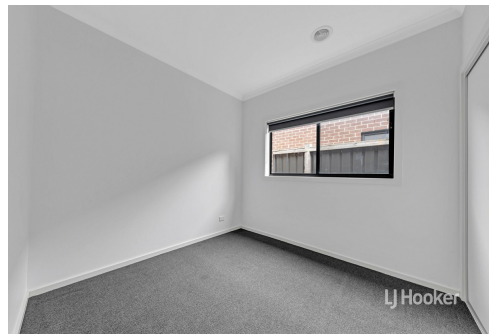
Sales Executive | mac.naidoo@ljhooker.com.au

Mary Jamal 0451 145 598

Sales Associate | mary.jamal@ljhooker.com.au

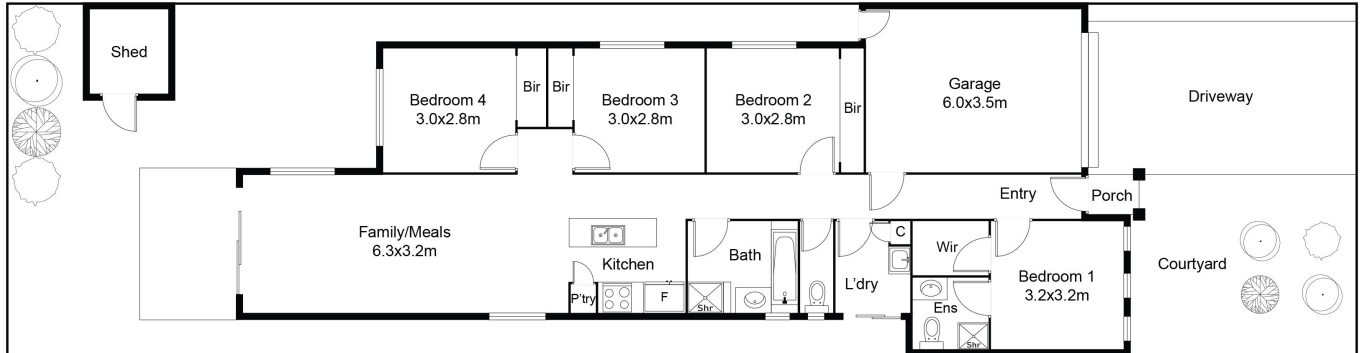
LJ Hooker Point Cook (03) 9975 7080

Shop 211, 4 Main Street, POINT COOK VIC 3030
pointcook.ljhooker.com.au | pointcook@ljhooker.com.au



LJ Hooker Point Cook
(03) 9975 7080

Disclaimer: All information contained therein is gathered from relevant third parties sources. We cannot guarantee or give any warranty about the information provided. Interested parties must rely solely on their own enquiries.



This floor plan including furniture, fixture measurements and dimensions are approximate and for illustrative purposes only. Realty Photos Wyndham gives no guarantee, warranty or representation as to the accuracy and layout. All enquiries must be directed to the agent, vendor or party representing this floor plan.



LJ Hooker Point Cook
(03) 9975 7080

Disclaimer: All information contained therein is gathered from relevant third parties sources. We cannot guarantee or give any warranty about the information provided. Interested parties must rely solely on their own enquiries.