



10 Seasons Drive, Botanic Ridge

Well-Appointed Family Home in the Heart of Botanic Ridge

The Property

Welcome to 10 Seasons Drive, Botanic Ridge. Presenting a modern layout with a strong focus on low-maintenance living, this home offers a comfortable and inviting environment. A classic open-plan design creates a bright, flowing space where the living and dining areas connect effortlessly, showcasing modern living at its best. Comprising four bedrooms, two bathrooms and a single garage, it presents the perfect opportunity for families, first-home buyers and savvy investors. Positioned within the Botanic Ridge Estate, the home is surrounded by parks and walking trails, with Botanic Ridge Village, quality schools and everyday essentials all within easy reach.

The Point of Difference

- An expansive open-plan living and dining domain with large windows allowing natural light to stream through, creating a bright and welcoming atmosphere and a layout that works perfectly for everyday living
- The kitchen features stainless steel appliances including gas cooktop, oven, rangehood, double sink, dishwasher, ample bench space and generous storage including a full-height pantry, complemented by a stylish tiled subway splashback

4 🏠 2 🚿 1 🚗

FOR SALE

\$695,000 - \$725,000

VIEW

Sat 2nd May @ 9:30AM - 10:00AM

AGENTS

Mac Naidoo
0452 516 565
mac.naidoo@ljhooker.com.au

Paul Nuske
0414 717 458
paul.nuske@ljhooker.com.au

AGENCY

LJ Hooker Point Cook
(03) 9975 7080

All information contained therein is gathered from relevant third parties sources. We cannot guarantee or give any warranty about the information provided. Interested parties must rely solely on their own enquiries.



- Four carpeted bedrooms provide comfortable accommodation, including a main suite with walk-in robe and ensuite, while the remaining bedrooms include built-in robes and are serviced by a modern central bathroom
- Set on 304m2 approx., the fully fenced backyard includes a grassed yard with surrounding garden beds, creating a private setting to enjoy
- Additional highlights include split system heating and cooling, a separate laundry with linen storage, quality window furnishings and a single remote garage with internal access.

The Point of Interest

Positioned within the Botanic Ridge Estate, the location is surrounded by established greenery, open spaces and a strong community atmosphere. The Royal Botanic Gardens Cranbourne is only moments away, offering expansive walking trails, native landscapes and beautifully maintained gardens. Settlers Run Golf & Country Club further enhances the lifestyle with its highly regarded golf course and clubhouse facilities. Everyday convenience is close at hand at Botanic Ridge Village, providing a range of retail, dining and essential services. Quality schools and childcare options are nearby, delivering a lifestyle with everyday convenience in a highly desirable community.

Note. All stated dimensions are approximate only. Particulars given are for general information only and do not constitute any representation on the part of the vendor or agent. Any school zoning stated based on www.findmyschool.vic.gov.au as of 28/04/26.

MORE DETAILS

Property ID 2JDKHGH
Property Type House

Mac Naidoo 0452 516 565

Sales Executive | mac.naidoo@ljhooker.com.au

Paul Nuske 0414 717 458

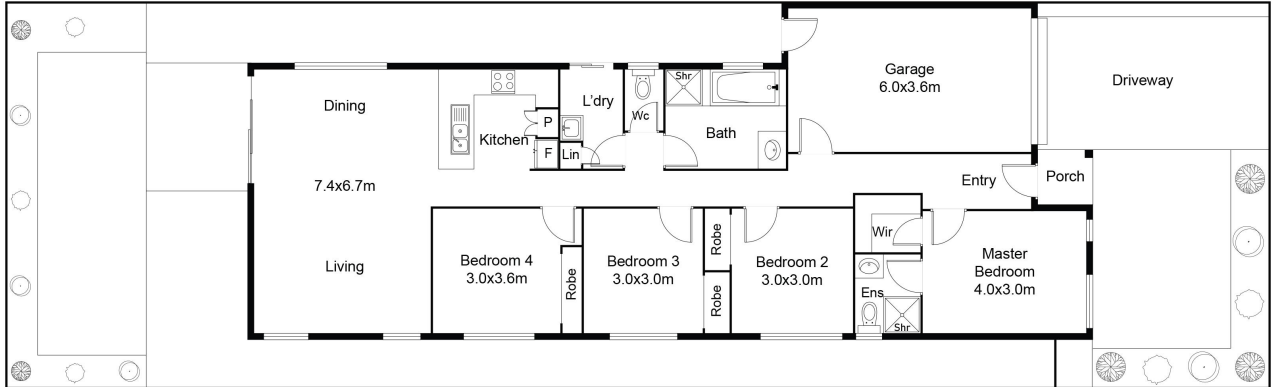
Licensed Estate Agent | paul.nuske@ljhooker.com.au

LJ Hooker Point Cook (03) 9975 7080

Shop 211, 4 Main Street, POINT COOK VIC 3030

pointcook.ljhooker.com.au | pointcook@ljhooker.com.au





This floor plan including furniture, fixture measurements and dimensions are approximate and for illustrative purposes only. Realty Photos Wyndham gives no guarantee, warranty or representation as to the accuracy and layout. All enquiries must be directed to the agent, vendor or party representing this floor plan.



All information contained therein is gathered from relevant third parties sources. We cannot guarantee or give any warranty about the information provided. Interested parties must rely solely on their own enquiries.

