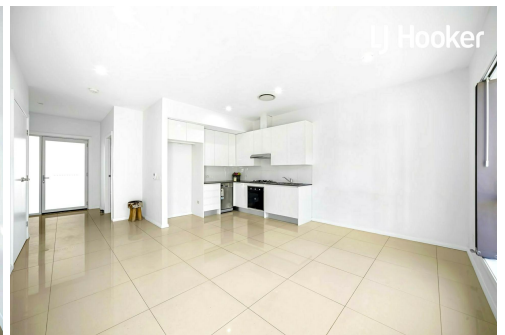
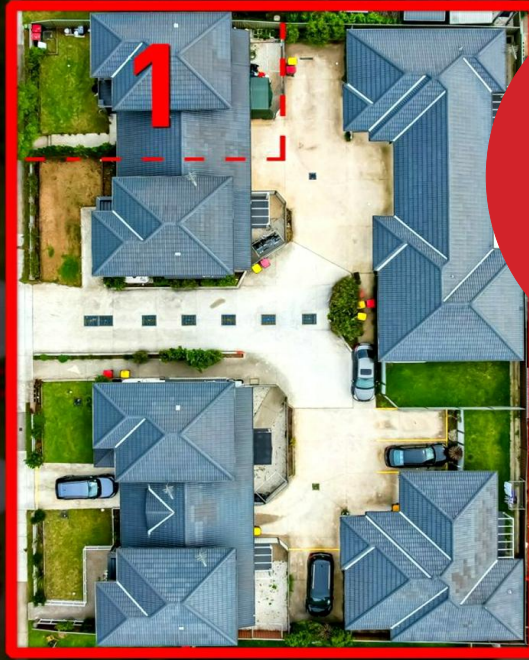


LJ Hooker

SOLD



Bossley Park, 1/620 Polding St

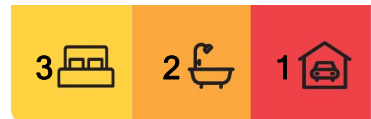
Quality townhouse in the prime location

Prime Location Townhouse - NDIS Suitable and Just 2 Minutes Walk from Stockland Shopping Center

Discover your dream home in this exceptional townhouse, perfectly situated in a prime location that offers the ultimate in modern comfort and convenience, just a stone's throw away from Stockland Shopping Center.

Nestled within a mere 2-minute walk of Stockland Wetherill Park Shopping Center, and within easy reach of schools, TAFE, Fairfield Hospital, public transport stops, and a quick drive from the bustling CBDs of Fairfield, Cabramatta, and Liverpool, this property promises a lifestyle of unrivaled ease and accessibility.

This townhouse boasts:



For Sale

Please Call

View

ljhooker.com.au/1D9NF8S

Contact

Khy Chea

0430 463 588

ky@ljhcabramatta.com.au

LJ Hooker Cabramatta
(02) 9726 5566

Disclaimer: All information contained therein is gathered from relevant third parties sources. We cannot guarantee or give any warranty about the information provided. Interested parties must rely solely on their own enquiries.

- + 3 spacious bedrooms and 2 well-appointed bathrooms
- + Thoughtful design catering to the needs of discerning homeowners
- + A single locked-up garage with convenient internal access
- + Generously sized formal living rooms
- + A stylish kitchen equipped with top-of-the-line stainless steel appliances
- + An internal laundry
- + A spacious backyard
- + Full ducted air-conditioning throughout

This immaculate townhouse is not just a home; it's an investment in your future. Whether you're a savvy investor or a homebuyer looking for modern comfort in a prime location, this property is the answer. Seize this incredible opportunity – schedule your viewing today!

Don't miss out – contact us now to arrange a viewing and experience the convenience and luxury of this prime location townhouse, just moments away from Stockland Shopping Center. This property is also NDIS suitable, providing inclusive living options for all.

Please note that terms of restriction on the use of the land are as follows and are provided for your reference:

Terms of restriction on the use of land: Only the following individuals, as described below, may occupy any accommodation on the specified lot:

- a) Seniors or individuals with disabilities
- b) Individuals residing within the same household as seniors or individuals with disabilities
- c) Staff members employed to assist in the administration and provision of services related to housing provided under SEPP.

All inquiries must include a contact number and email address. Inquiries lacking this information will not receive a response.

Please note that virtual/styling furniture may have been utilized for illustration purposes.



LJ Hooker Cabramatta
(02) 9726 5566

Disclaimer: All information contained therein is gathered from relevant third parties sources. We cannot guarantee or give any warranty about the information provided. Interested parties must rely solely on their own enquiries.

More About this Property

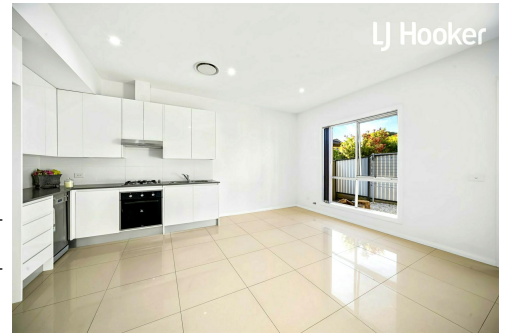
Property ID ID9NF8S
Property Type Townhouse

Khy Chea

Senior Sales Executive | ky@ljhcabramatta.com.au

LJ Hooker Cabramatta (02) 9726 5566

Level 1, 7/46 Park Road, CABRAMATTA NSW 2166
cabramatta.ljhooker.com.au | admin@ljhcabramatta.com.au



LJ Hooker Cabramatta
(02) 9726 5566

Disclaimer: All information contained therein is gathered from relevant third parties sources. We cannot guarantee or give any warranty about the information provided. Interested parties must rely solely on their own enquiries.



1/620 Polding Street, Bossley Park



DISCLAIMER: No liability for the accuracy of details contained within our floor plans. All plans are drawn and also checked to the best of our ability, however information contained in our floor plans such as area calculations are approximate, and have not been surveyed or drawn to scale. Our floor plans are for representational purposes only and should be used as such. Do not attempt to refer to our floor plans for structural or detailed information.