




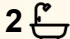
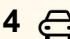
58-60 Forest Ridge Drive, Bonogin

Elevated Acreage Living in Prestigious Gated Forest Ridge Estate

Welcome to 58–60 Forest Ridge Drive, Bonogin, a private sanctuary nestled within the exclusive, gated 'Mudgeeraba Forest Ridge' Estate.

Positioned on the peaceful eastern side of the Bonogin Valley, this prestigious acreage property offers the perfect balance of space, security, and convenience. Set on just over an acre of land, the home enjoys a sense of openness and freedom rarely found, with no neighbours across the street, just natural bushland and a serene leafy outlook from the rear. Privacy and tranquillity are at the heart of this property. Just a short drive to local beaches, quality schools, and major amenities, it feels a world away while keeping everything within easy reach.

Built in 2012, this beautifully presented split-level residence is designed for relaxed family living. Generous proportions and a flowing layout create a sense of space throughout, while multiple living zones allow families to come together or enjoy their own retreat. Large windows and sliding doors invite an abundance of natural light and capture the surrounding greenery from every angle, enhancing the

5  2  4 

FOR SALE

Offers over \$2,450,000

VIEW

Sat 2nd May @ 12:00PM - 12:30PM

AGENTS

Roelien Powell
0420 664 690
roelien@ljhgcp.com.au

Jessica Powell
Mudgeeraba@ljhgcp.com.au

AGENCY

LJ Hooker Mudgeeraba
07 5530 6000

All information contained therein is gathered from relevant third parties sources. We cannot guarantee or give any warranty about the information provided. Interested parties must rely solely on their own enquiries.

 **LJ Hooker**

home's calm and welcoming atmosphere.

At the heart of the home, the kitchen connects effortlessly to the main living and outdoor entertaining areas, making it ideal for everyday living as well as hosting family and friends. The seamless transition to the expansive deck and pool area creates a true indoor-outdoor lifestyle, perfectly suited to Queensland living.

The thoughtfully designed floorplan caters to both privacy and functionality, featuring a secluded master retreat and a separate wing ideal for children or guests.

Property features include:

- Ducted air conditioning for year-round comfort
- Spacious open-plan living and dining areas with tiled flooring
- Modern, well-appointed kitchen
- Private master suite, separation from other bedrooms
- Dedicated children's/guest wing with three bedrooms, lounge, and bathroom
- Media room/ or second separate living off main dining/living
- Separate home office or optional fifth bedroom
- Stunning in-ground pool with expansive deck, perfect for entertaining
- Generous grassed area ideal for family activities and a fire pit
- Secure remote double garage plus additional off-street parking
- Gated estate access via secure code or fob

This is a rare opportunity to secure a lifestyle property that combines privacy, practicality, and the ease of modern living in one of Bonogin's most sought-after estates.

Beaches: ~15—25 minutes

Train: ~10—15 minutes

Major shopping: ~8—15 minutes

MORE DETAILS

Property ID	CAJ15
Property Type	House
House Size	350 m2
Land Area	4108 m2
Including	Ensuite
	Air Conditioning
	Ducted Cooling
	Ducted Heating
	Toilets (2)
	Pool
	Dishwasher
	Outdoor Entertaining
	Built-in-Robes
	Secure Parking
	Remote Garage

Roelien Powell 0420 664 690

Principal Licensee / Sales Specialist | roelien@ljhgcp.com.au

Jessica Powell

Office Manager / Sales Specialist | Mudgeeraba@ljhgcp.com.au

LJ Hooker Mudgeeraba 07 5530 6000

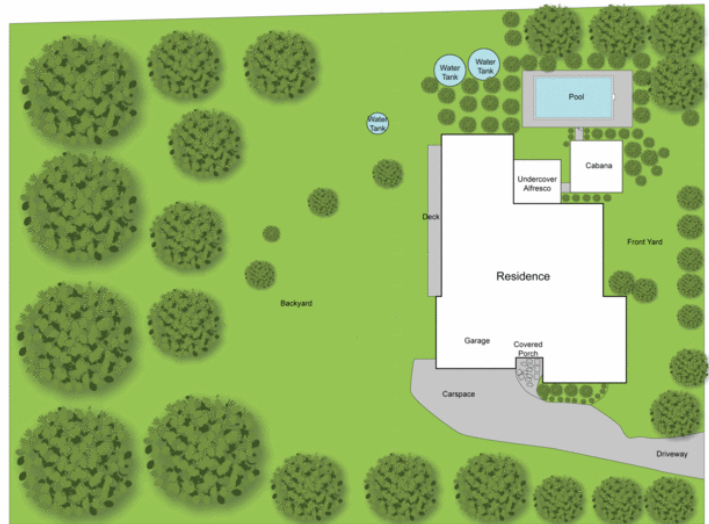
1/58 Railway Street, MUDGEERABA QLD 4213

mudgeeraba.ljhooker.com.au | mudgeeraba@ljhgcp.com.au





Ground Floor



Site Plan

58-60 FOREST RIDGE DRIVE, BONOGIN QLD 4213, AUSTRALIA



5 2 2

Land Size: 4108m² | Internal: 257m² | External: 100m² | Total: 357m²

Scale in meters. Indicative only. Dimensions are approximate. All information contained herein is gathered from sources we believe to be reliable. However, we cannot guarantee its accuracy and interested persons should rely on their own enquiries.