



42 Clancy Mckenna Crescent, Bonner


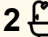
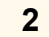
The Flow of Life, Captured in Design

Sunlight drapes across open living spaces, spilling effortlessly into an alfresco designed for long lunches, evening drinks, and weekends that feel endless. Every corner of this home invites connection-between inside and out, between family, friends, and the life you want to live.

There's a rhythm here, a flow that makes daily living feel effortless and natural. The spaces are generous without excess, functional without compromise, and perfectly attuned to both quiet moments and social gatherings.

Set on a serene street in Bonner, this home positions you close to parks, schools, shops, and transport, yet offers a sense of retreat from the everyday. It's a place where lifestyle meets location, where presence and practicality coexist, and where each day can be shaped exactly how you want it.

This isn't just a home-it's a statement, a backdrop for your life, and a rare opportunity to claim a property that stands apart in both form and experience.

4  2  2 

FOR SALE
\$1,100,000+

AGENTS

Troy Thompson
0408 694 917
troy.thompson@ljhooker.com.au

Estephano Cardenas
0415 423 006
ecardenas@ljhgungahlin.com.au

AGENCY

LJ Hooker Gungahlin
(02) 6213 3999

All information contained therein is gathered from relevant third parties sources.
We cannot guarantee or give any warranty about the information provided.
Interested parties must rely solely on their own enquiries.

 **LJ Hooker**

Why this property captivates:

- A main bedroom with private ensuite offering a personal sanctuary
- Three generously sized bedrooms, each with built-in robes for effortless organisation
- Multi-purpose room at the front of the house
- Split-level design creating natural separation between living and retreat spaces
- Expansive open-plan living and dining area drenched in natural light
- A dedicated study zone ideal for focused work or creativity
- Kitchen with gas cooktop, blending practicality with style
- Reverse-cycle heating and cooling keeping every corner comfortable year-round
- Freshly painted inside and out, giving the home a crisp, updated feel
- Private alfresco and backyard designed for entertaining, relaxing, or soaking up the outdoors
- Thoughtfully planned interiors that balance functionality with presence
- Set on a serene street yet only moments from parks, schools, shops, and transport
- Spaces crafted for both lively gatherings and quiet moments
- A home that delivers lifestyle, convenience, and undeniable character in one complete package

Proximity to Amenities:

- Within 2 minutes' drive to local parks and playgrounds
- Within 3 minutes' drive to Bonner Primary School and nearby high schools
- Within 3-5 minutes' drive to local shops, cafes, and essential services
- Within 5 minutes' drive to larger shopping hubs including Gungahlin Town Centre
- Within 5-10 minutes' drive to public transport options and major arterial roads
- Within 10-15 minutes' drive to Canberra City Centre (CBD) and key employment precincts
- Close to community facilities, sporting grounds, and recreational areas, offering a lifestyle of convenience and connection

MORE DETAILS

Property ID	35X2GCV
Property Type	House
House Size	240 m2
Land Area	487 m2
EER	6
Including	Study

Troy Thompson 0408 694 917

Director / Licensed Agent ACT/NSW |
troy.thompson@ljhooker.com.au

Estephano Cardenas 0415 423 006

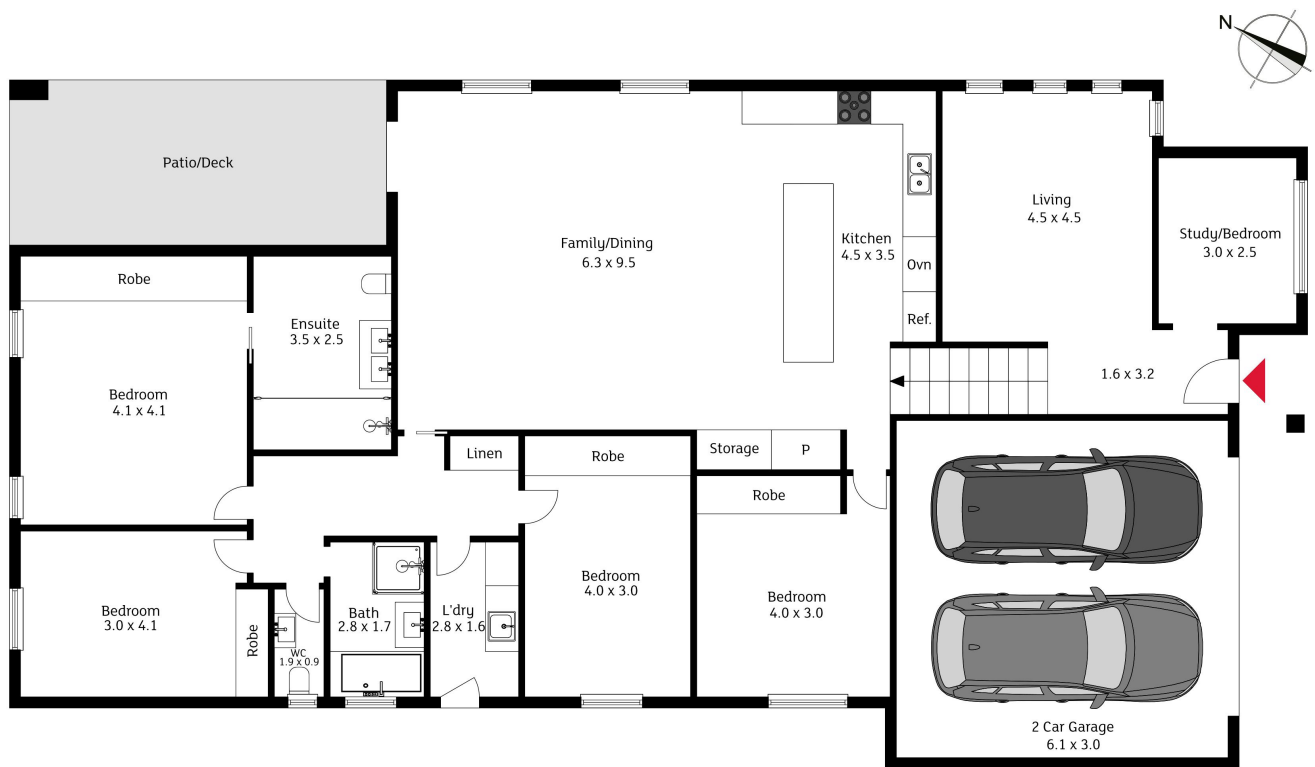
Sales Associate to Troy Thompson | ecardenas@ljhgungahlin.com.au

LJ Hooker Gungahlin (02) 6213 3999

Suite 2C, Level 1, Gungahlin Village, 46-50 Hibberson Street,
GUNG AHLIN ACT 2912

gungahlin.ljhooker.com.au | gungahlin@ljhooker.com.au





The floor plan is not to scale; measurements are indicative and in metres. Exterior elements are not in position. Plans should not be relied on. Interested parties should make and rely on their own enquiries.

42 Clancy McKenna Crescent, Bonner



All information contained therein is gathered from relevant third parties sources.
 We cannot guarantee or give any warranty about the information provided.
 Interested parties must rely solely on their own enquiries.

