

## Bongaree, 25/77 Cotterill Avenue

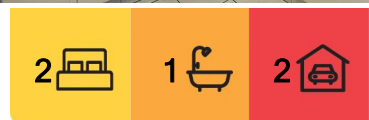
### DOUBLE GARAGE DUPLEX IN BONGAREE

Situated in the ever sought after Bongaree, Bribie Islands, Elli Court complex. This duplex offers a quiet location, handy to all the island has to offer. Featuring two double sized bedrooms, both with built in robes. A single two-way bathroom, allowing you to enter from the main bedroom or hallway, with a separate bath and shower. A combined lounge and dining area leading onto the outside covered patio in your own private courtyard. A tidy functional kitchen with electric appliances and a generous sized breakfast bar, and that huge over sized double garage with two remote controlled roller doors and internal entry to the property for extra security.

Realistic body corp fees, in a well maintained complex. This property is currently tenanted but will be move in ready at the end of July. A must inspect property for a low maintenance lifestyle. Inspections available at the open house times only, I hope to see you there.

Property features.

- Brick and tile construction
- 2 double sized bedrooms



**For Sale**  
Offers over \$649,000

**View**  
By Appointment

**Contact**  
**Gary Houghton**  
0402 669 029  
ghoughton.bribieisland@ljhooker.com.au



**Disclaimer:** All information contained therein is gathered from relevant third parties sources. We cannot guarantee or give any warranty about the information provided. Interested parties must rely solely on their own enquiries.

**LJ Hooker Bribie Island**  
**(07) 3400 1900**



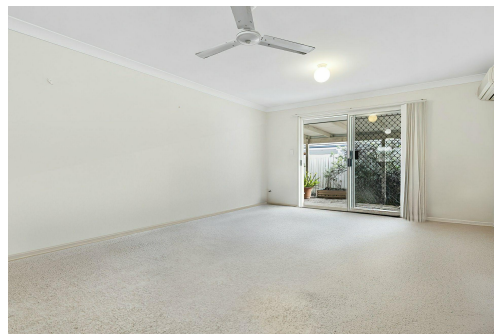
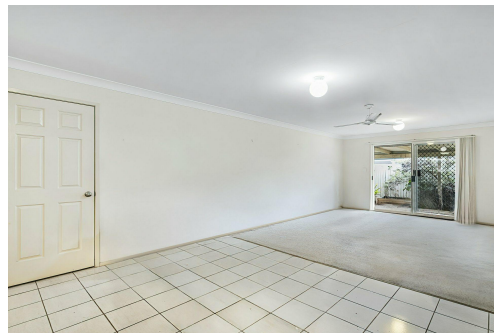
- Two-way bathroom
- Bath and shower
- Covered patio
- Private courtyard
- Oversized double garage
- Internal entry from garage
- Remotes
- Quiet complex- well maintained
- Low maintenance lifestyle

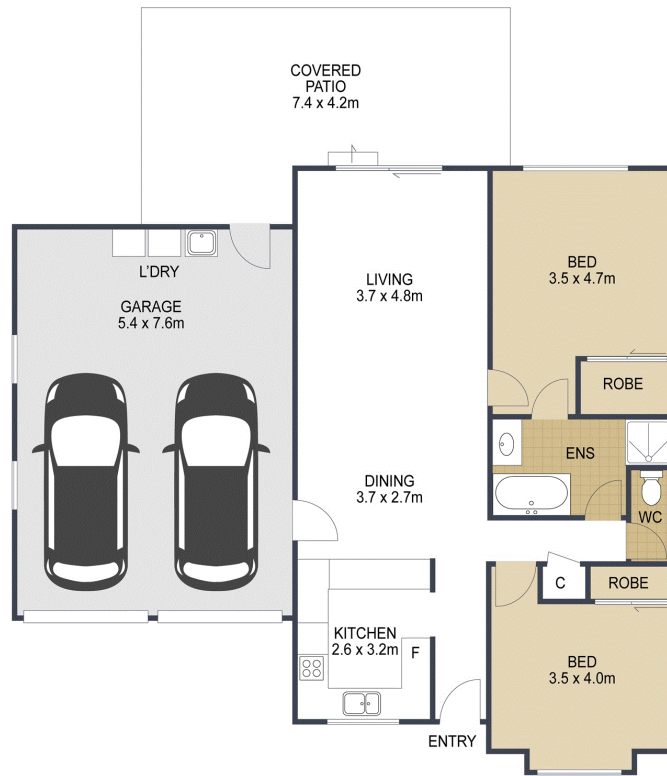
## More About this Property

Property ID	WXBHCP
Property Type	Unit

**Gary Houghton 0402 669 029**  
 Residential Sales | [ghoughton.bribieisland@ljhooker.com.au](mailto:ghoughton.bribieisland@ljhooker.com.au)

**LJ Hooker Bribie Island (07) 3400 1900**  
 16/19 Benabrow Avenue, BELLARA QLD 4507  
[bribieisland.ljhooker.com.au](mailto:bribieisland.ljhooker.com.au) | [sales.bribieisland@ljhooker.com.au](mailto:sales.bribieisland@ljhooker.com.au)





	2
	1
	2
TOTAL:	161m <sup>2</sup>

## 25/77 Cotterill Avenue, **BONGAREE**

ARTIST'S IMPRESSION ONLY: While every attempt has been made to ensure the accuracy of this floor plan's areas and measurements of doors, windows, rooms and all other items are approximate and no responsibility is taken for any error, omission, or mis-statement. This plan is for illustrative purposes only and should only be used as such by any prospective purchaser.  
Floor plan by: [www.open2view.com.au](http://www.open2view.com.au)