

## Bongaree, 10/52-54 Winston Drive

UNDER CONTRACT

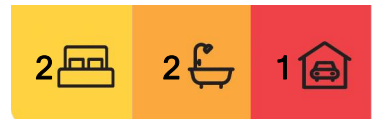
Welcome to the perfect set and forget investment or your new, low maintenance coastal living abode in the perfect Bongaree location. Nestled in the Welsby Waters complex, this 2-bedroom, 2-bathroom unit offers a breezy open and bright interior with a contemporary kitchen and breakfast bar. 2 spacious bedrooms with ceiling fans, one with ensuite, adjoin the living zone complimented by a separate bathroom. A generously sized balcony overlooks the Bribie Bridge & Pumicestone Passage with only a short walk to the Sandstone Point Hotel and other local shops and amenities.

The property enjoys coastal sea breezes being only 1 street back from the beach and of course, walking distance to excellent cafes, shops and superb eateries.

This property is vacant and ready for immediate settlement.



**Disclaimer:** All information contained therein is gathered from relevant third parties sources. We cannot guarantee or give any warranty about the information provided. Interested parties must rely solely on their own enquiries.



**For Sale**

Please Call

**View**

[ljhooker.com.au/VT8HCP](http://ljhooker.com.au/VT8HCP)

**Contact**

**Connor Raven**

0499 027 046

[craven.bribieisland@ljhooker.com.au](mailto:craven.bribieisland@ljhooker.com.au)

**Gary Houghton**

0402 669 029

[ghoughton.bribieisland@ljhooker.com.au](mailto:ghoughton.bribieisland@ljhooker.com.au)

**LJ Hooker Bribie Island**  
**(07) 3400 1900**

PHOTOS HAVE BEEN VISUALLY ENHANCED FOR SALES PURPOSES.

## More About this Property

**Property ID** VT8HCP

**Property Type** Unit

**Connor Raven 0499 027 046**

Residential Sales | [craven.bribieisland@ljhooker.com.au](mailto:craven.bribieisland@ljhooker.com.au)

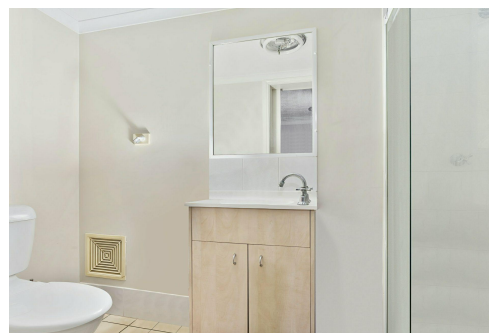
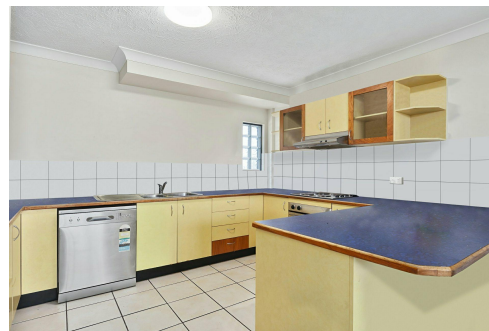
**Gary Houghton 0402 669 029**

Residential Sales | [ghoughton.bribieisland@ljhooker.com.au](mailto:ghoughton.bribieisland@ljhooker.com.au)

**LJ Hooker Bribie Island (07) 3400 1900**

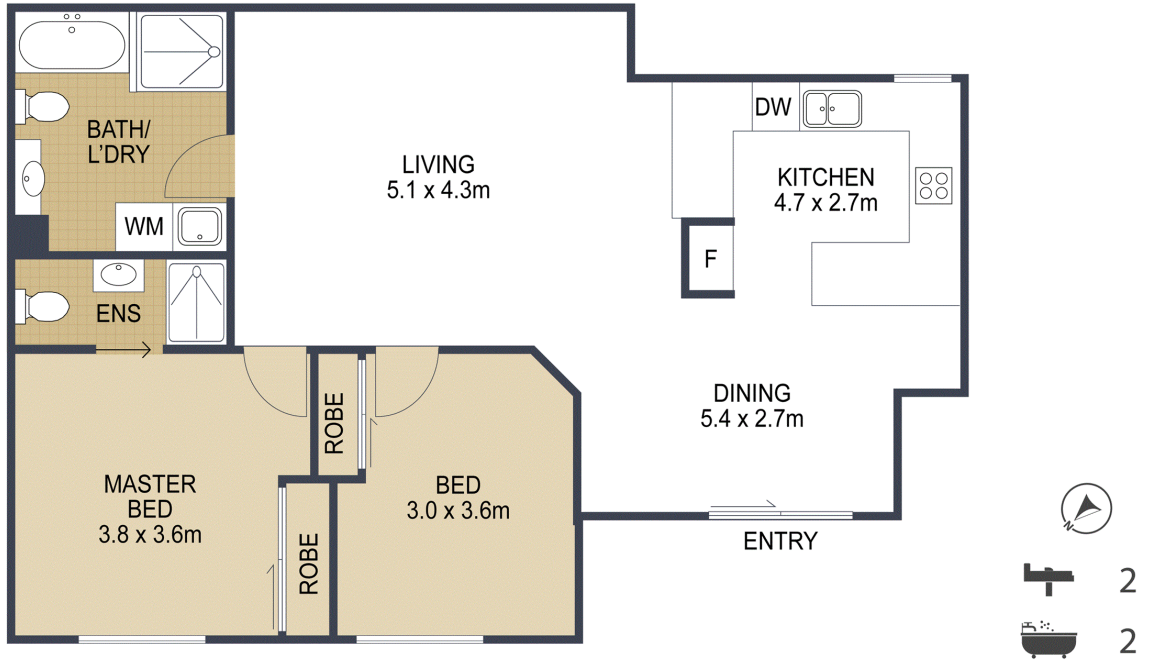
16/19 Benabrow Avenue, BELLARA QLD 4507

[bribieisland.ljhooker.com.au](http://bribieisland.ljhooker.com.au) | [enquiries.bribieisland@ljhooker.com.au](mailto:enquiries.bribieisland@ljhooker.com.au)



**LJ Hooker Bribie Island  
(07) 3400 1900**

**Disclaimer:** All information contained therein is gathered from relevant third parties sources. We cannot guarantee or give any warranty about the information provided. Interested parties must rely solely on their own enquiries.



TOTAL: 85 m<sup>2</sup>

10/52 Winston Drive, **BONGAREE**

ARTIST'S IMPRESSION ONLY: While every attempt has been made to ensure the accuracy of this floor plan's areas and measurements of doors, windows, rooms and all other items are approximate and no responsibility is taken for any error, omission, or mis-statement. This plan is for illustrative purposes only and should only be used as such by any prospective purchaser. Floor plan by: [www.open2view.com.au](http://www.open2view.com.au)

