



## Bongaree, 1/14 Jasmin Drive

### Canal Front-Bongaree Townhouse

Beautifully renovated 2 storey waterfront townhouse packed with features in The Bribie Gardens Canal Estate, Bongaree. Short walk to Bribie Island Shopping Centre, and central to the island. Open plan living downstairs, new kitchen, and outdoor covered entertaining area all overlooking the water. Split air-conditioning throughout, and ceiling fans in all bedrooms upstairs. Main bedroom upstairs has its own balcony overlooking the water also. Third toilet down, and loads of parking for the toys. Single lock up garage, side access to a covered car/boat port, and a new double carport being erected at the front also. Power no problem with the brand new 6kw solar system. Low body corporate, and a rare opportunity to secure a low maintenance canal front property in Bongaree.

3 

2 

4 

#### For Sale

Please Call

#### View

[ljhooker.com.au/WIEHCP](http://ljhooker.com.au/WIEHCP)

#### Contact

##### John Farren-Price

0418 887 891

[jfarrenprice@ljhooker.com.au](mailto:jfarrenprice@ljhooker.com.au)

##### Gary Houghton

0402 669 029

[ghoughton.bribieisland@ljhooker.com.au](mailto:ghoughton.bribieisland@ljhooker.com.au)



**LJ Hooker Bribie Island**  
**(07) 3400 1900**

**Disclaimer:** All information contained therein is gathered from relevant third parties sources. We cannot guarantee or give any warranty about the information provided. Interested parties must rely solely on their own enquiries.



## More About this Property

<b>Property ID</b>	WIEHCP
<b>Property Type</b>	Townhouse
<b>Land Area</b>	400 m <sup>2</sup>
<b>Including</b>	Ensuite Toilets (3) Courtyard Balcony Deck Dishwasher Outdoor Entertaining Built-in-Robes Secure Parking Solar Panels Remote Garage

### John Farren-Price

Licensed Real Estate Agent | [jfarrenprice@ljhooker.com.au](mailto:jfarrenprice@ljhooker.com.au)

### Gary Houghton

Residential Sales | [ghoughton.bribieisland@ljhooker.com.au](mailto:ghoughton.bribieisland@ljhooker.com.au)

### LJ Hooker Bribie Island (07) 3400 1900

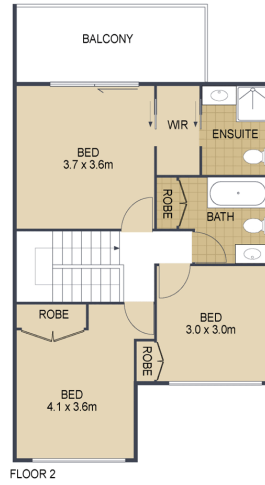
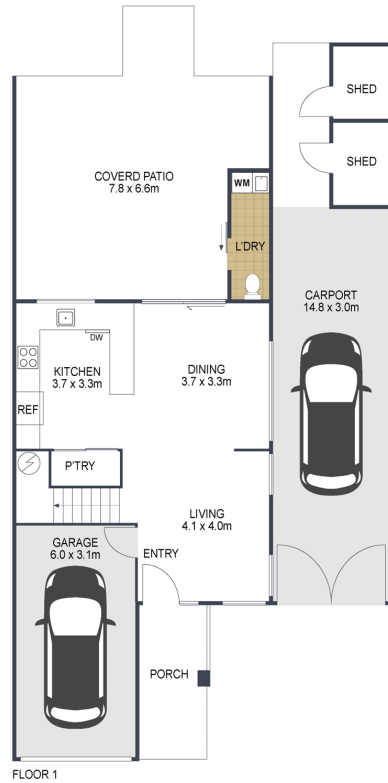
16/19 Benabrow Avenue, BELLARA QLD 4507

[bribieisland.ljhooker.com.au](http://bribieisland.ljhooker.com.au) | [enquiries.bribieisland@ljhooker.com.au](mailto:enquiries.bribieisland@ljhooker.com.au)



**LJ Hooker Bribie Island**  
**(07) 3400 1900**

**Disclaimer:** All information contained therein is gathered from relevant third parties sources. We cannot guarantee or give any warranty about the information provided. Interested parties must rely solely on their own enquiries.



 3

 2

 2

TOTAL: 223m<sup>2</sup>

## 1/14 Jasmin Drive, **BONGAREE**

ARTIST'S IMPRESSION ONLY: While every attempt has been made to ensure the accuracy of this floor plan's areas and measurements of doors, windows, rooms and all other items are approximate and no responsibility is taken for any error, omission, or mis-statement. This plan is for illustrative purposes only and should only be used as such by any prospective purchaser. Floor plan by: [www.open2view.com.au](http://www.open2view.com.au)

