



5/2 Ocean Street North, Bondi

Elevated North-East Facing Bondi Apartment with Ocean Views & Garage

Enjoying a sunny north-east aspect, this elevated 2nd-floor apartment offers sweeping Bondi district and Ocean views. The open-plan living and dining area flows seamlessly to a private balcony with ocean outlooks, perfect for soaking in the coastal lifestyle. The spacious kitchen is fitted with quality appliances and ample storage, while both generously sized bedrooms feature built-in wardrobes. Additional highlights include an internal laundry, full bathroom, secure entry, and a huge lock-up garage with storage space.

Positioned within walking distance to Bondi Road village, Bondi Beach, Bondi Junction, cafes, and city buses, this bright and breezy apartment presents a fantastic opportunity to secure a premium beachside home.

- Elevated 2nd floor position with district and ocean views
- North-east facing, filled with natural light
- Two spacious bedrooms with built-in wardrobes
- Spacious kitchen with quality appliances and excellent storage
- Private balcony with sweeping ocean outlook

All information contained therein is gathered from relevant third parties sources. We cannot guarantee or give any warranty about the information provided. Interested parties must rely solely on their own enquiries.

2 🏠 1 🚿 1 🚗

FOR SALE
SOLD | Contact Agent

AGENTS
Darran Wyatt
0407 440 947
darran@ljhdoublebay.com

James Fragias
0432 503 176
james.fragias@ljhdoublebay.com

AGENCY
LJ Hooker Double Bay
(02) 9185 2816

 **LJ Hooker**

- Internal laundry, lift access and security building
- Secure lock-up garage with additional storage space
- Walk to Bondi Beach, Bondi Junction, cafes, and city buses

MORE DETAILS

Property ID 2ACHYY
Property Type Apartment

Darran Wyatt 0407 440 947

Associate Director - Wyatt Property Group Pty Ltd |
darran@ljhdoublebay.com

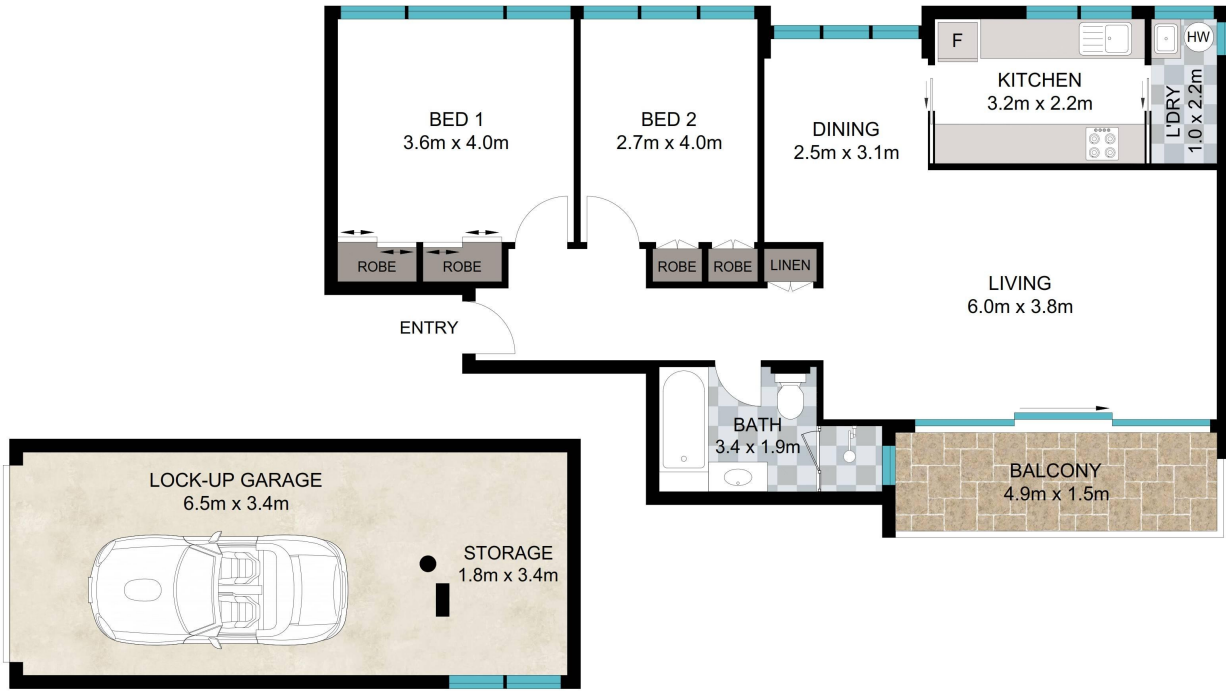
James Fragias 0432 503 176

Sales Associate Team Wyatt | james.fragias@ljhdoublebay.com

LJ Hooker Double Bay (02) 9185 2816

38 Ocean Street, WOOLLAHRA NSW 2025
doublebay.ljhooker.com.au | admin@ljhdoublebay.com





APPROX. INT: 78m²
 GARAGE / STORAGE: 28m²
 BALCONY: 7m²

Scale in metres. Indicative only. Dimensions are approximate. All information contained herein is gathered from sources we believe to be reliable. However we cannot guarantee its accuracy and interested persons should rely on their own enquiries.

5/2 Ocean Street North, Bondi