

Bondi Junction, W805/310-330 Oxford Street

SOLD OFF MARKET DARRAN WYATT

Discover the perfect blend of luxury, convenience, and style in this light-filled apartment nestled within the vibrant community of The Forum. Showcasing state-of-the-art fixtures and fittings coupled with a location that supports a bustling lifestyle, in the heart of this vibrant hub. Experience the best of Bondi Junction living with excellent transport links, granting you easy access to parks, beaches, and all the local key attractions.

Features:

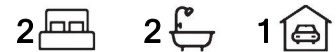
- Open plan living and dining areas, flooded with natural light, seamlessly extending to a north-facing balcony
- High-end kitchen featuring top-of-the-line appliances including a VZug double oven and dishwasher, Liebherr integrated fridge/freezer, and De Dietrich induction cooktop.
- Master bedroom with a walk-in robe and a large ensuite featuring shower/bath.
- Second double bedroom with robes and a second full-size bathroom giving ample space

LJ Hooker

Disclaimer: All information contained therein is gathered from relevant third parties sources. We cannot guarantee or give any warranty about the information provided. Interested parties must rely solely on their own enquiries.

SOLD

LJ Hooker
Double Bay Group



For Sale
SOLD - PRIVATE TREATY

View
ljhooker.com.au/1ZHHYY

Contact
Darran Wyatt
0407 440 947
darran@ljhdoubebay.com

LJ Hooker Double Bay
(02) 9185 2816

for guests or family

- Modern comforts with ducted air conditioning, elegant timber floorboards throughout and video intercom
- Large common rooftop terrace offering breathtaking views of the city and harbour
- Undercover secure parking and a storage cage.

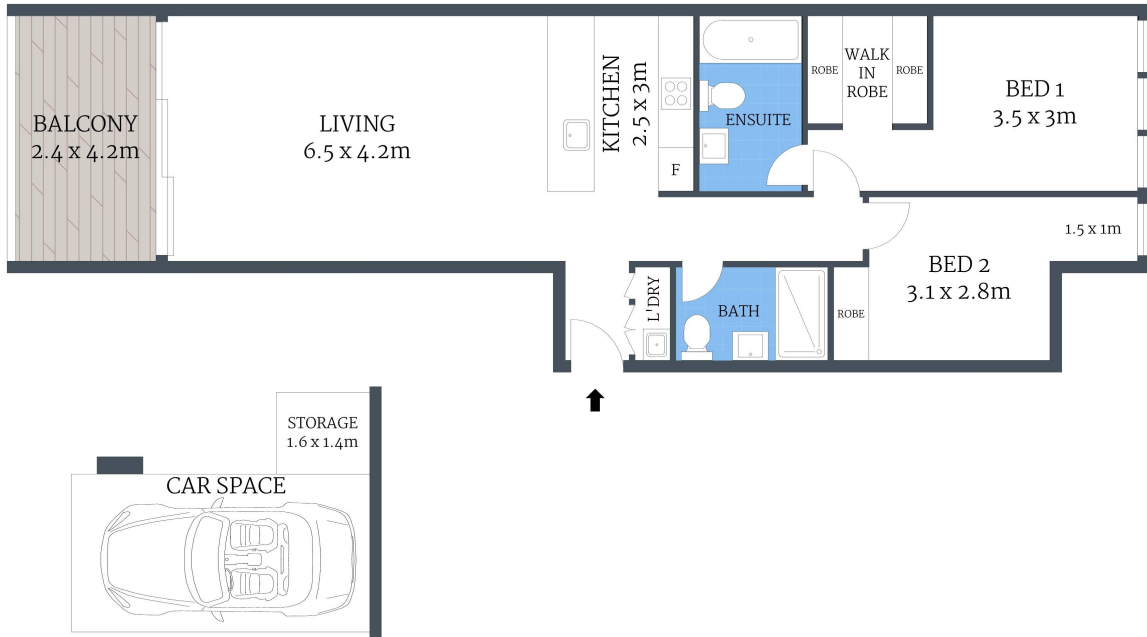
More About this Property

Property ID	1ZHHYY
Property Type	Apartment

Darran Wyatt 0407 440 947
Associate Director | darran@ljhdoublbay.com

LJ Hooker Double Bay (02) 9185 2816
6/710 New South Head Road, ROSE BAY NSW 2029
doublebay.ljhooker.com.au | admin@ljhdoublbay.com





W805/310-330 OXFORD STREET, BONDI JUNCTION

Scale shown in meters. All dimensions herein are approximate and gathered from sources believed to be reliable. Whilst every effort is made for the accuracy of our floor plans, interested parties should rely on their own enquiries.

Approximate Apartment 96sqm
 Approximate Parking & Storage 16sqm