



2/4 Paul Street, Bondi Junction

2 🏠 1 🚿 0 🚗

Charming Art Deco Apartment Moments from Bondi Beach

FOR SALE
SOLD | Contact Agent

AGENTS

Darran Wyatt
0407 440 947
darran@ljhdoublbay.com

James Fragias
0432 503 176
james.fragias@ljhdoublbay.com

AGENCY

LJ Hooker Double Bay
(02) 9185 2816

Bright, fresh, and full of character, this beautifully presented ground-floor apartment offers a lifestyle of comfort and convenience just minutes from the iconic Bondi Beach. Set in a boutique 1930s block of only eight, it blends timeless charm with scope to add personal touches, all within walking distance of shops, transport, and coastal attractions.

- Freshly painted interiors with high ceilings and timber floors
- Light-filled living area with classic picture rails
- Spacious eat-in kitchen with gas cooking and ample storage
- Two oversized bedrooms drenched in natural sunlight
- Bright and airy bathroom with wide picture windows
- Classic 1930s security block with timber-panelled foyer
- " Move-in ready with potential to enhance or update
- " Stroll to Waverley and Cooper Parks, shops, and cafés
- Level walk to Bondi Junction Station and Westfield
- Minutes from Bondi Beach, bars, and celebrated eateries

All information contained therein is gathered from relevant third parties sources.
We cannot guarantee or give any warranty about the information provided.
Interested parties must rely solely on their own enquiries.

 **LJ Hooker**

MORE DETAILS

Property ID 2AAHYY
Property Type Apartment

Darran Wyatt 0407 440 947

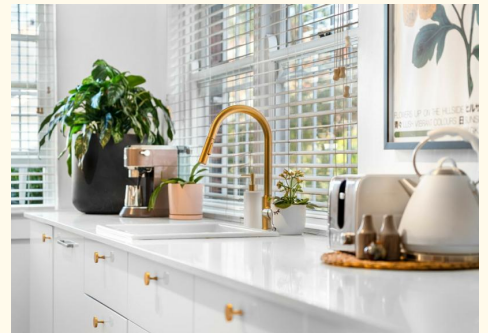
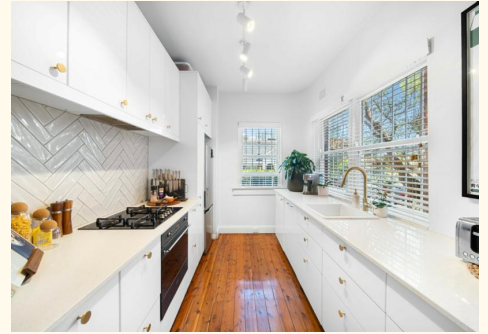
Associate Director - Wyatt Property Group Pty Ltd |
darran@ljhdoublebay.com

James Fragias 0432 503 176

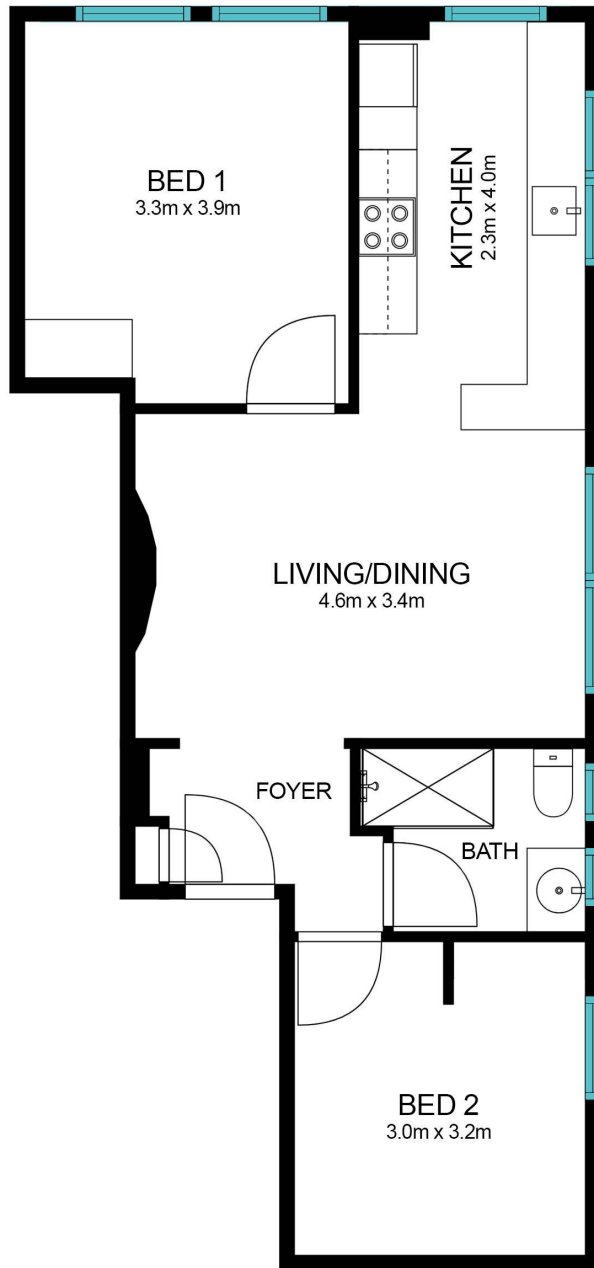
Sales Associate Team Wyatt | james.fragias@ljhdoublebay.com

LJ Hooker Double Bay (02) 9185 2816

38 Ocean Street, WOOLLAHRA NSW 2025
doublebay.ljhooker.com.au | admin@ljhdoublebay.com



All information contained therein is gathered from relevant third parties sources.
We cannot guarantee or give any warranty about the information provided.
Interested parties must rely solely on their own enquiries.



Scale in metres. Indicative only. Dimensions are approximate. All information contained herein is gathered from sources we believe to be reliable. However we cannot guarantee its accuracy and interested persons should rely on their own enquiries.

2/4 Paul Street, Bondi Junction

All information contained therein is gathered from relevant third parties sources.
We cannot guarantee or give any warranty about the information provided.
Interested parties must rely solely on their own enquiries.