



Bondi Beach, 3/65 Francis Street

Vast Tree-Top Sanctuary With Entertainer's Deck And Magnificent Gully Views

A spectacular tree-top sanctuary awaits at this exceptional 2-bedroom apartment, one of only 3 in a boutique building privately positioned in a coveted Francis St setting. Backing onto a spectacular tree-filled gully, it feels like a luxury private getaway while being just steps to the iconic shores of Bondi Beach. Lovingly renovated, it is a masterclass in effortless indoor/outdoor living, blending timber, concrete and metal accents to create a warm yet contemporary feel.

A vast L-shaped deck offers show-stopping views, enjoying a sunlit NE-facing aspect and creating a magical backdrop for entertaining and quiet moments of restoration. Inside, the spacious living room features a fully retractable picture window, the chef's kitchen centres around a huge island bench, while the adjacent dining flows to the deck via dual sliding doors. The main bedroom features a deluxe ensuite, while the 2nd includes a bespoke dressing room and home office, complete with custom desk and shelving.

LJ Hooker

Disclaimer: All information contained therein is gathered from relevant third parties sources. We cannot guarantee or give any warranty about the information provided. Interested parties must rely solely on their own enquiries.

2 2 0

Auction
Sat 20th Sep @ 1:30PM

View
Thu 11th Sep @ 11:00AM - 11:30AM

Contact
Marina Makhlin
0422 274 555
marina@ljhookereast.com.au

Nicholas Breadman
0407 551 446
nicholas@ljhookereast.com.au

LJ Hooker Bondi Junction | Bondi Beach
(02) 8036 7525

On the lower level, a communal timber deck offers the same stunning view, while a private laundry room with storage provides convenience. The world-class lifestyle of Bondi awaits just a short stroll from this tranquil haven, inviting you for a morning swim, an invigorating coastal walk, or a catch up with friends for coffee, dinner or sunset drinks. This beautifully crafted home offers the best of both worlds, presenting a unique chance to secure your own private paradise in one of Sydney's most sought-after beachside communities.

- *Stunning 2-bedroom home with superb NE-facing outlook
- *1 of just 3 boutique apartments at the leafy end of Francis St
- *Sprawling L-shaped timber deck offers tropical gully outlook
- *Wide floorboards, bespoke concrete & woodwork throughout
- *Spacious living with fully retractable window opening to deck
- *Sleek kitchen w/ gas hob, Bosch dishwasher, stone benches
- *Huge island with seating, abundant storage, pendant lighting
- *Dining space opens through 2 sets of sliding doors to decking
- *Main bed with deluxe ensuite incl. bath, built-ins, ceiling fan
- *2nd bedroom w/ study/dressing room, custom desk, shelves
- *Chic central bathroom, private laundry on lower ground level
- *Vast common deck area on LG enjoying same stunning view
- *Mins to the beach, cafes, fitness studios, coastal walk, schools.

More About this Property

Property ID	4UUHRN
Property Type	Apartment

Marina Makhlin 0422 274 555

Principal | marina@ljhookereast.com.au

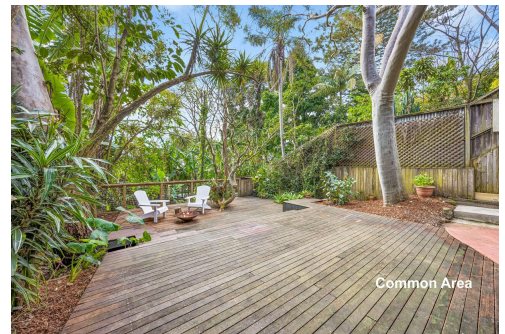
Nicholas Breadman 0407 551 446

Principal | nicholas@ljhookereast.com.au

LJ Hooker Bondi Junction | Bondi Beach (02) 8036 7525

62 Spring Street, BONDI JUNCTION NSW 2022

bondi.ljhooker.com.au | admin@ljhookereast.com.au

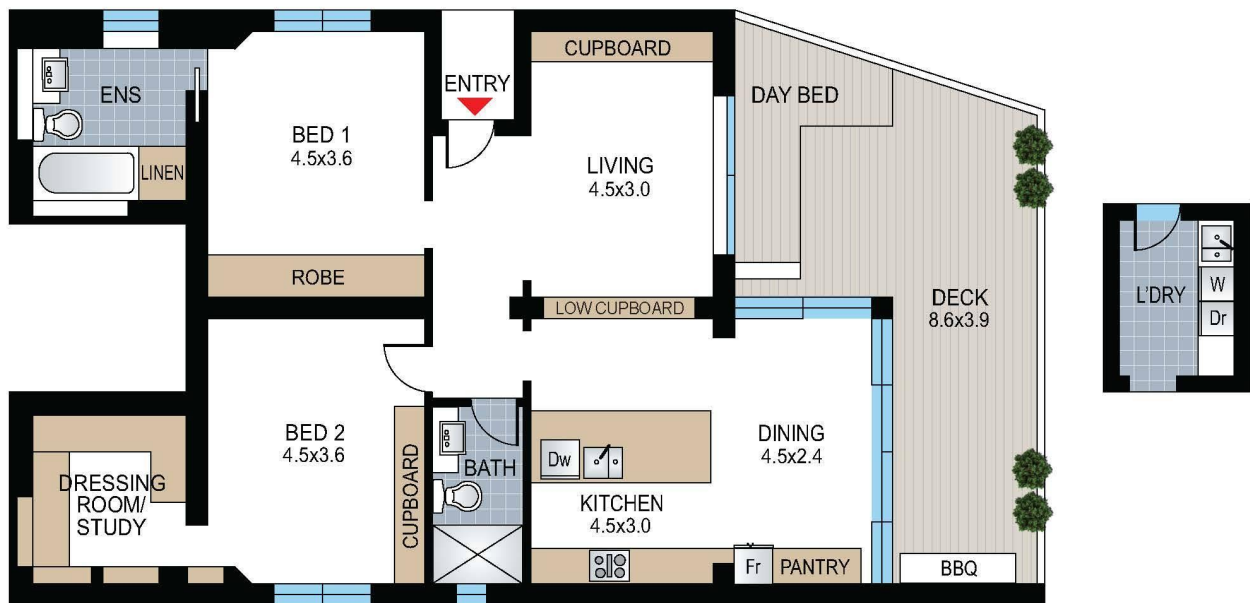


LJ Hooker

Disclaimer: All information contained therein is gathered from relevant third parties sources.

We cannot guarantee or give any warranty about the information provided. Interested parties must rely solely on their own enquiries.

LJ Hooker Bondi Junction | Bondi Beach
(02) 8036 7525



MARINA MAKHLIN 0422 274 555
NICHOLAS BREADMAN 0407 551 446

This diagram is for illustrative purpose only. All reasonable care has been taken in the preparation, but no warranty is given to the accuracy of the information. This document does not constitute any part of any offer or contract. Dimensions shown are approximate only. Prospective purchasers must rely on their own enquiries.

3/65 Francis Street



BONDI BEACH