



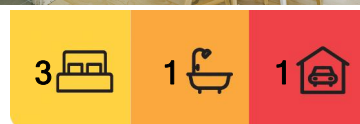
## Bolton Point, 19A Threlkeld Drive

AFFORDABLE + ADORABLE

Not to be missed —Best value investment/ first home with roomy three bedroom layout, private courtyard, great location, close the schools, parks, local shopping and waterfront access.

- Three bedroom layout
- Airconditioned
- Build in wardrobe
- Reserve at rear
- Close to schools, parks + Lake Macquarie
- Single garage with internal access

The information contained herein has been provided by people we believe to be reliable, however all interested parties must rely on their own enquiries.



**For Sale**  
\$550,000

**View**  
[ljhooker.com.au/Z9NF7Q](http://ljhooker.com.au/Z9NF7Q)

**Contact**  
**David Magin**  
0412 685 917  
[david.magin@ljhooker.com.au](mailto:david.magin@ljhooker.com.au)  
**Maya O'Brien**  
0423 962 399  
[maya.obrien@ljhooker.com.au](mailto:maya.obrien@ljhooker.com.au)



**Disclaimer:** All information contained therein is gathered from relevant third parties sources. We cannot guarantee or give any warranty about the information provided. Interested parties must rely solely on their own enquiries.

**LJ Hooker Lake Macquarie**  
(02) 4915 3800

## More About this Property

Property ID	Z9NF7Q
Property Type	Townhouse

**David Magin 0412 685 917**

Senior Sales Executive | david.magin@ljhooker.com.au

**Maya O'Brien 0423 962 399**

Sales Associate | maya.obrien@ljhooker.com.au

**LJ Hooker Lake Macquarie (02) 4915 3800**

Shop 12, 240-260 Hillsborough Road, WARNERS BAY NSW 2282

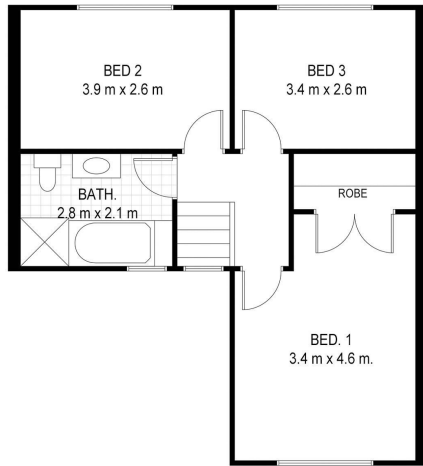
lakemacquarie.ljhooker.com.au | warnersbay@ljhooker.com.au



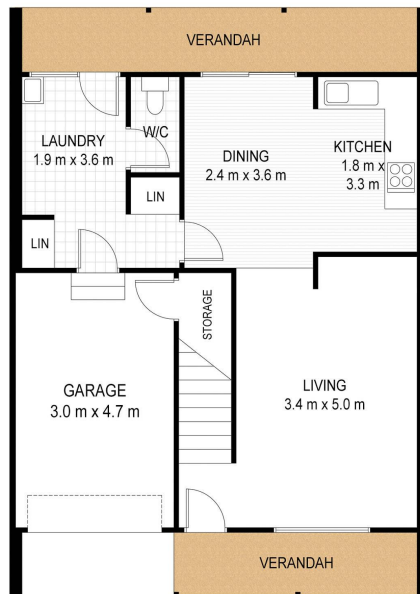
**Disclaimer:** All information contained therein is gathered from relevant third parties sources. We cannot guarantee or give any warranty about the information provided. Interested parties must rely solely on their own enquiries.

**LJ Hooker Lake Macquarie  
(02) 4915 3800**



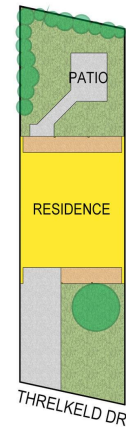


Upper Floor Plan



Lower Floor Plan

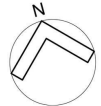
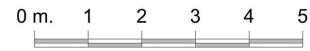
Total Approx. Internal Floor Area: 110 sqm



Site Plan  
Not to Scale



19A Threlkeld Dr  
Bolton Point



Measurements and direction of north are approximate and are to be used as a guide only.



LJ Hooker Lake Macquarie  
(02) 4915 3800

**Disclaimer:** All information contained therein is gathered from relevant third parties sources.  
We cannot guarantee or give any warranty about the information provided. Interested parties must rely solely on their own enquiries.