



Bolton Point, 2a Wattle Street

RESERVE WATERFRONT



Located in a private and leafy enclave on the point at Bolton Point. This is a home for the entire family. Set on a magnificent and fully landscaped 782 sqm block, with easy access to the deep, clean foreshore of Lake Macquarie. Stunning in size and flow and filled with natural light, the bush and lake vista is breathtaking.

- Six magnificent bedrooms plus study/home office
- Master bedroom offers spectacular ensuite with smart mirrors, walk in dressing room and extra-large private entertaining deck with sweeping lake views
- Two additional bathrooms have been renovated throughout
- Intimate formal lounge room flooded with natural light, stunning newly refurbished fireplace
- Extra-large outdoor entertaining area that overlooks Lake Macquarie
- Resort style inground pool
- Two car garage

For Sale
\$1,500,000

View
ljhooker.com.au/Z88F7Q

Contact
Mark Campbell
0412 912 312
mark.campbell@ljhooker.com.au



LJ Hooker Lake Macquarie
(02) 4915 3800

Disclaimer: All information contained therein is gathered from relevant third parties sources. We cannot guarantee or give any warranty about the information provided. Interested parties must rely solely on their own enquiries.

- Vast under house storage

The information contained herein has been provided by people we believe to be reliable, however all interested parties must rely on their own enquiries.

More About this Property

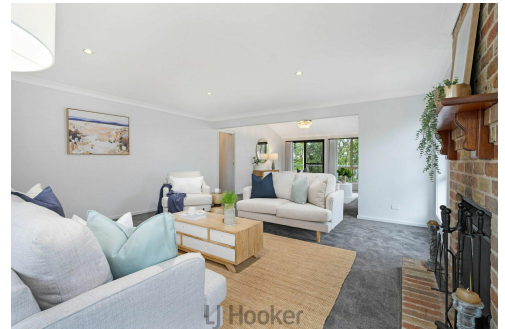
Property ID	Z88F7Q
Property Type	House
Land Area	781.3 m2

Mark Campbell 0412 912 312

Director - General Manager | mark.campbell@ljhooker.com.au

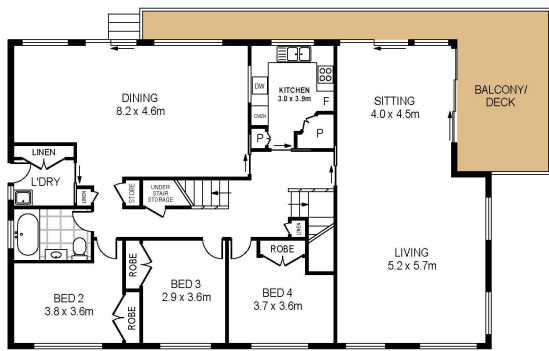
LJ Hooker Lake Macquarie (02) 4915 3800

Shop 12, 240-260 Hillsborough Road, WARNERS BAY NSW 2282
lakemacquarie.ljhooker.com.au | warnersbay@ljhooker.com.au

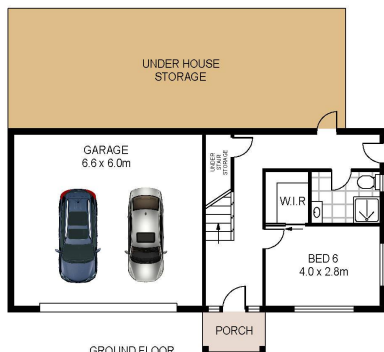


LJ Hooker Lake Macquarie
(02) 4915 3800

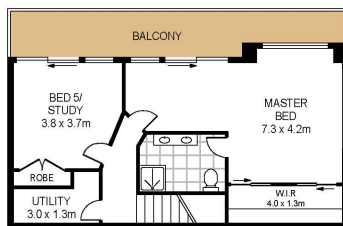
Disclaimer: All information contained therein is gathered from relevant third parties sources. We cannot guarantee or give any warranty about the information provided. Interested parties must rely solely on their own enquiries.



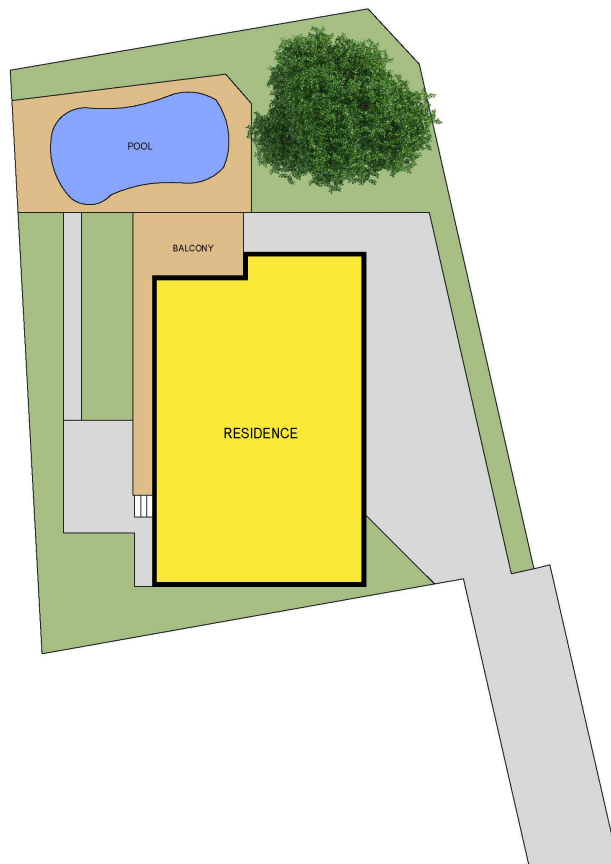
FIRST FLOOR



GROUND FLOOR



SECOND FLOOR



2A Wattle Street
Bolton Point



Total Internal Floor Area: 268 sqm

Scale in metres. Indicative only. Dimensions are approximate. All information contained herein is gathered from sources we believe to be reliable. However we cannot guarantee its accuracy and interested persons should rely on their own enquiries



LJ Hooker Lake Macquarie
(02) 4915 3800

Disclaimer: All information contained therein is gathered from relevant third parties sources. We cannot guarantee or give any warranty about the information provided. Interested parties must rely solely on their own enquiries.