

131 Princes Highway, Bodalla

2 🏠 1 🚗 0 🚘

## Picture-Perfect Cottage Charm

This delightful Bodalla cottage offers a rare opportunity to secure a piece of history while enjoying all the comforts of relaxed village living. From the moment you step inside, you'll be captivated by the home's enduring charm. High ceilings, original timber floorboards and a beautiful open fireplace create a welcoming atmosphere that celebrates the craftsmanship of a bygone era.

The flexible floorplan features two comfortable bedrooms, a central bathroom with integrated laundry, a separate lounge room perfect for cosy evenings by the fire, and a dedicated dining room that invites long lunches and family gatherings. Front and rear decks provide the ideal spots to enjoy your morning coffee, entertain friends, or simply soak in the peaceful surroundings.

Set on a substantial parcel of land, the property offers endless possibilities for those seeking space and self-sufficiency. There's ample room for caravans, boats, trailers and additional vehicles, while keen gardeners will appreciate the opportunity to create expansive veggie gardens, establish fruit trees, or simply enjoy the freedom that comes with a large backyard.

Combining historic charm, village convenience and plenty of room to grow, this enchanting cottage is the perfect choice for first-home buyers, downsizers, weekend escape seekers or anyone dreaming of a slower pace of life in one of the South Coast's most charming communities.

**FOR SALE**  
\$595,000

**VIEW**  
Sat 20th Jun @ 10:00AM - 10:30AM

**AGENTS**  
Steven Hutcheson  
0407 226 603  
steven.hutcheson@ljhooker.com.au

**AGENCY**  
LJ Hooker Narooma  
(02) 4476 1000

All information contained therein is gathered from relevant third parties sources.  
We cannot guarantee or give any warranty about the information provided.  
Interested parties must rely solely on their own enquiries.

 **LJ Hooker**

Contact LJ Hooker Narooma today to arrange an inspection.

## MORE DETAILS

Property ID 3TNHMM  
Property Type House  
Land Area 1443 m2

**Steven Hutcheson 0407 226 603**

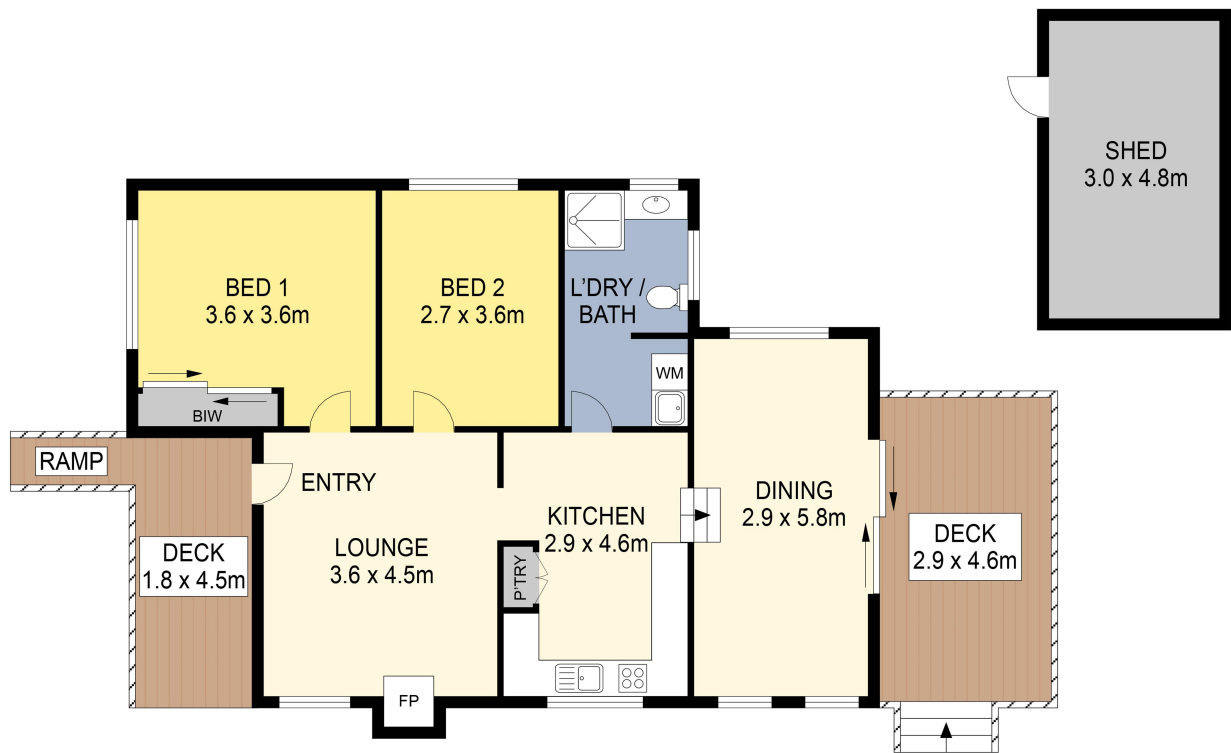
Licensed Real Estate Agent | [steven.hutcheson@ljhooker.com.au](mailto:steven.hutcheson@ljhooker.com.au)

**LJ Hooker Narooma (02) 4476 1000**

Shop 6, 4 -6 Noorooma Crescent, NAROOMA NSW 2546  
[narooma.ljhooker.com.au](http://narooma.ljhooker.com.au) | [narooma@ljhooker.com.au](mailto:narooma@ljhooker.com.au)



All information contained therein is gathered from relevant third parties sources.  
We cannot guarantee or give any warranty about the information provided.  
Interested parties must rely solely on their own enquiries.



PLANS SHOWN ONLY INDICATIVE OF LAYOUT. DIMENSIONS ARE APPROXIMATE.



131 Princes Highway, Bodalla



All information contained therein is gathered from relevant third parties sources.  
 We cannot guarantee or give any warranty about the information provided.  
 Interested parties must rely solely on their own enquiries.

