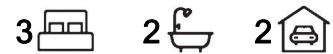


Blakeview, 8 Waratah Drive

Offers Closing Monday 27th January at 5pm



What You've Been Looking For!

Situated on a generous 600sqm (approx.) of land is this delightful three-bedroom family 'bluestone fronted' home built in 1993. The home offers two flexible living areas with a spacious front family and meals, and casual living room to the rear of the home adjacent to the central kitchen. Along with two bathrooms, the master bedroom with its own ensuite and walk-in robe the entire family will feel right at home. There is an abundance of parking thanks to the lock up double garage, space in the driveway for additional vehicles and a second drive with gated access to the side yard offering space for those needing to store a caravan or boat perhaps.

Features include:

- * Large 600sqm (approx.) block
- * Three bedrooms, master with walk-in robe and ensuite bathroom

For Sale

\$549,000 - \$589,000

View

ljhooker.com.au/2B9EGJU

Contact

Shaun Roberts

0435 367 534

shaunr@ljhsales.com.au



Disclaimer: All information contained therein is gathered from relevant third parties sources.

We cannot guarantee or give any warranty about the information provided. Interested parties must rely solely on their own enquiries.

**LJ Hooker Greenwith | Golden Grove
| Mawson Lakes | Modbury
(08) 8289 6660**

- * Family and meals adjacent to central kitchen
- * Kitchen with breakfast bar, walk-in pantry, with views over backyard
- * Front family and meals with sliding access outdoors
- * Ducted reverse cycle air conditioning
- * New flooring throughout
- * Home alarm security
- * Double garage (x1 auto) with internal access to the home
- * Shed/workshop
- * Outdoor shaded pergola entertaining area ideal for entertaining with lawn yard

Easy access onto Main North Road for those commuting to the Adelaide CBD and just moments to nearby Munno Para and Blakeview Shopping Centres. Schools are close by for those with children, along with sporting grounds, playgrounds and reserves.

Enquire today.

All information provided has been obtained from sources we believe to be accurate, however, we cannot guarantee the information is accurate and we accept no liability for any errors or omissions (including but not limited to a property's land size, floor plans and size, building age and condition). Interested parties should make their own enquiries and obtain their own legal and financial advice. Should this property be scheduled for auction, the Vendor's Statement may be inspected at either of our two LJ Hooker Property Specialists Real Estate offices for 3 consecutive business days immediately preceding the auction and at the auction for 30 minutes before it starts.

RLA 208516

More About this Property

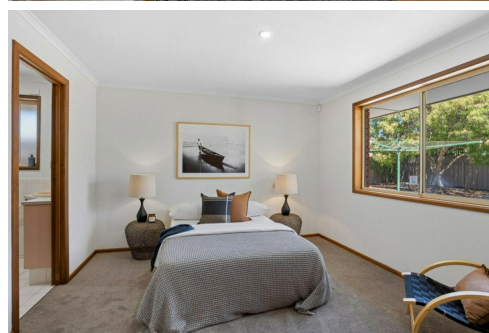
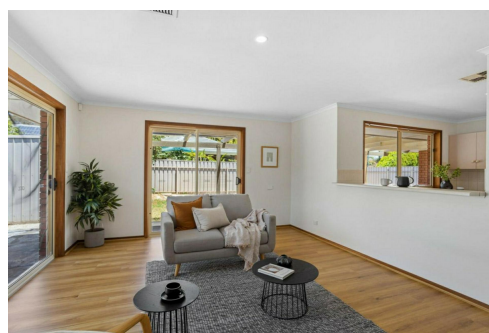
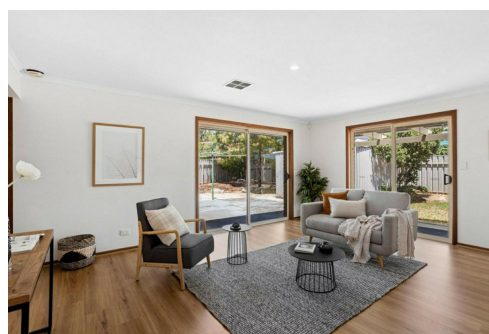
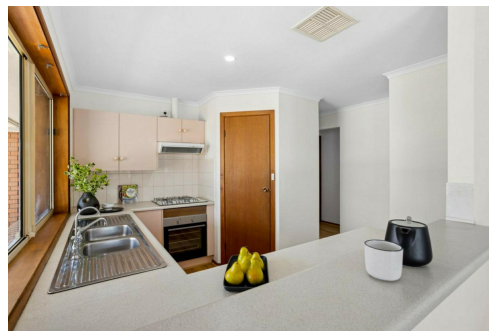
Property ID	2B9EGJU
Property Type	House
House Size	165 m2
Land Area	600 m2
Including	Air Conditioning Ducted Cooling Ducted Heating Outdoor Entertaining Secure Parking Fully Fenced

Shaun Roberts 0435 367 534

Managing Partner | Sales Specialist | shaunr@ljhsales.com.au

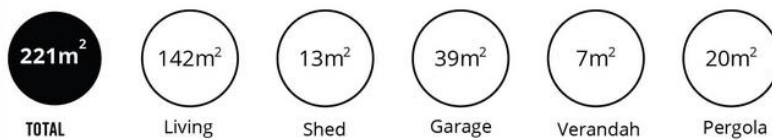
LJ Hooker Greenwith | Golden Grove | Mawson Lakes | Modbury (08) 8289 6660

North East, Shop 2, 1007 North East Road, RIDGEHAVEN SA 5097
greenwithgoldengrove.ljhooker.com.au | info@ljhsupport.com.au



Disclaimer: All information contained therein is gathered from relevant third parties sources. We cannot guarantee or give any warranty about the information provided. Interested parties must rely solely on their own enquiries.

**LJ Hooker Greenwith | Golden Grove
| Mawson Lakes | Modbury
(08) 8289 6660**



Scale in metres. This drawing is for illustration purposes only. All measurements are approximate and details intended to be relied upon should be independently verified.

Produced by The Fotobase Group