

Blakeview, 20 Oxford Terrace

Charming Villa Living in a Convenient Location

Presented by Andrew Rose and Bradley Clark of LJ Hooker, this charming 3-bedroom villa offers comfortable living in a convenient location.

Built in 1995, the home is thoughtfully designed with two spacious living areas - a formal lounge and a light-filled family room - perfect for both relaxation and entertaining. The kitchen is well-appointed with a gas oven, generous bench space, and a walk-in pantry to keep everything neatly tucked away.

The master bedroom features a built-in robe and private access to the two-way bathroom, offering both functionality and privacy. Year-round comfort is ensured with ducted evaporative cooling and a reverse cycle wall unit.

Step outside and enjoy the pergola-covered entertaining area - ideal for BBQs, family get-togethers, or simply unwinding after a long day. The established gardens add to the

3 1 1

For Sale
\$560,000 - \$590,000

View
Sat 14th Jun @ 10:00AM - 10:30AM

Contact
Bradley Clarke
0422 070 240
brad.clarke@ljhcs.com.au

Andrew Rose
0421 988 597
andrew.rose@ljhcs.com.au



Disclaimer: All information contained therein is gathered from relevant third parties sources. We cannot guarantee or give any warranty about the information provided. Interested parties must rely solely on their own enquiries.

LJ Hooker Craigmore | Elizabeth | Salisbury
(08) 8255 9555

appeal, creating a peaceful outdoor retreat.

A single carport is provided, with additional space for a second vehicle. Sitting on a generous 330sqm allotment, this home is an excellent opportunity for first-home buyers, downsizers, or savvy investors alike.

Key Features:

- Three well-sized bedrooms
- 2 Living Areas
- 2 Way Bathroom
- Single Carport
- Heating and Cooling
- Outdoor entertainment area

Specifications:

- CT / 5165/109
- Council / Playford
- Built / 1995
- Land / 330sqm (approx.)
- Easements / SUBJECT TO SERVICE EASEMENT(S) OVER THE LAND MARKED F FOR DRAINAGE PURPOSES TO THE COUNCIL FOR THE AREA (223LG RPA)
- Estimated rental assessment / \$TBA per week

Located in a sought-after pocket, this home is just moments from Munno Para Shopping Centre, where you'll find an array of restaurants, shops, pharmacies, medical facilities, and fast-food options. Families will appreciate the proximity to quality schools, including Craigmores High School, Blakes Crossing Christian College, Blakeview Primary, and Trinity College. Nearby parks provide great spaces for outdoor activities.

Don't miss your chance - contact us today to secure this fantastic home before it's gone!

Disclaimer:

We have in preparing this document used our best endeavours to ensure the information contained is true and accurate, but accept no responsibility and disclaim all liability in respect to any errors, omissions, inaccuracies or misstatements contained. Prospective purchasers should make their own enquiries to verify the information contained in this document.

RLA155355



Disclaimer: All information contained therein is gathered from relevant third parties sources. We cannot guarantee or give any warranty about the information provided. Interested parties must rely solely on their own enquiries.

**LJ Hooker Craigmores | Elizabeth |
Salisbury
(08) 8255 9555**

More About this Property

Property ID	6792FDC
Property Type	House
House Size	107 m2
Land Area	330 m2

Bradley Clarke 0422 070 240

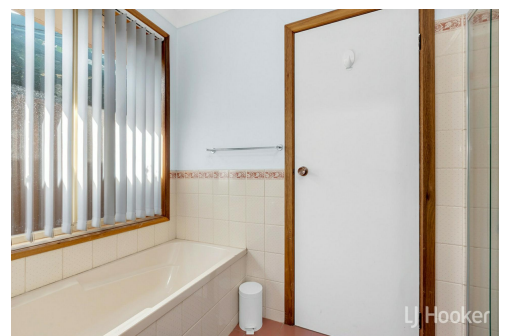
Sales Representative | brad.clarke@ljhces.com.au

Andrew Rose 0421 988 597

Senior Sales Representative | andrew.rose@ljhces.com.au

LJ Hooker Craigmore | Elizabeth | Salisbury (08) 8255 9555

Shop 17, Craigmore Village, Yorktown Road, CRAIGMORE SA 5114
craigmoreelizabeth.ljhooker.com.au | Office@ljhces.com.au



Disclaimer: All information contained therein is gathered from relevant third parties sources.
We cannot guarantee or give any warranty about the information provided. Interested parties must rely solely on their own enquiries.

**LJ Hooker Craigmore | Elizabeth |
Salisbury
(08) 8255 9555**



NOT IN ACTUAL LOCATION



20 Oxford Terrace, Blakeview

DISCLAIMER: Floorplan and area calculation are approximate and for illustration purposes only.
Produced by **Property Portraits**

Interior	96m ²	138m² TOTAL
Carport	16m ²	
Pergola	18m ²	
Porch	2m ²	
Shed	6m ²	