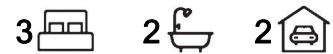


## Blakeview, 2 Butler Court

WHAT A GREAT PLACE TO START, INVEST OR NEST!!



Welcome to 2 Butler Crescent, Blakeview!

This is a great home that offers you two-living areas, pitched undercover entertaining area's, double garage with internal entry, low-maintenance gardens, ideal for the Investor, first home buyer or the young family.

Features include

- \* Three bedrooms
- \* Master with ensuite and walk-in robe
- \* Built-in robes to bedrooms two and three
- \* Nice kitchen with ample cupboard space
- \* Light filled family and meals
- \* Separate lounge room
- \* Pitched pergola entertaining

**For Sale**

\$649,000 - \$689,000

**View**

[ljhooker.com.au/2B16GJU](http://ljhooker.com.au/2B16GJU)

**Contact**

**Craig Ricciuto**

0417 806 329

[craig@ljhsales.com.au](mailto:craig@ljhsales.com.au)



**LJ Hooker Greenwith | Golden Grove  
| Mawson Lakes | Modbury  
(08) 8289 6660**

**Disclaimer:** All information contained therein is gathered from relevant third parties sources.

We cannot guarantee or give any warranty about the information provided. Interested parties must rely solely on their own enquiries.

- \* Low-maintenance gardens
- \* Reverse cycle heating and cooling

Tucked away in a quiet Court and within easy access to the Blakes crossing shopping precinct, local schools, transport, medical facilities and much more.

All information provided has been obtained from sources we believe to be accurate, however, we cannot guarantee the information is accurate and we accept no liability for any errors or omissions (including but not limited to a property's land size, floor plans and size, building age and condition). Interested parties should make their own enquiries and obtain their own legal and financial advice. Should this property be scheduled for auction, the Vendor's Statement may be inspected at either of our two LJ Hooker Property Specialists Real Estate offices for 3 consecutive business days immediately preceding the auction and at the auction for 30 minutes before it starts.

RLA 208516

## More About this Property

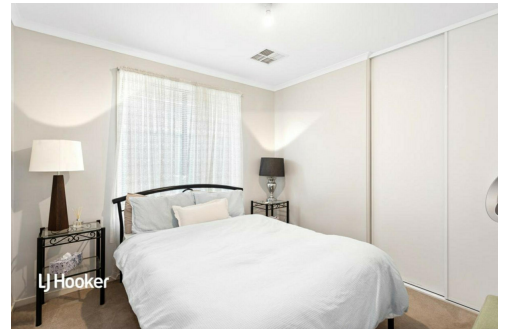
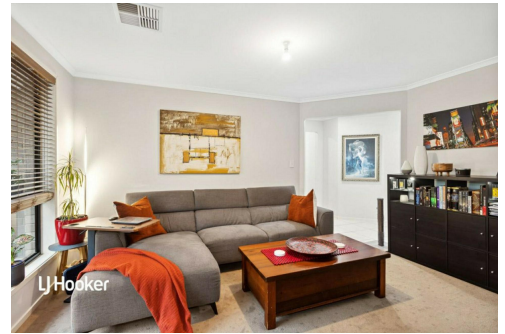
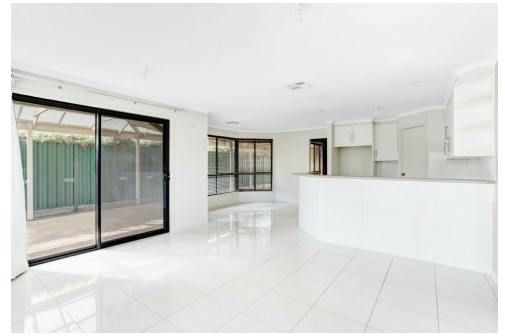
<b>Property ID</b>	2B16GJU
<b>Property Type</b>	House
<b>House Size</b>	170 m2
<b>Land Area</b>	420 m2
<b>Including</b>	Air Conditioning Dishwasher Built-in-Robes

### Craig Ricciuto 0417 806 329

Managing Partner | Sales Specialist | [craigr@ljhsales.com.au](mailto:craigr@ljhsales.com.au)

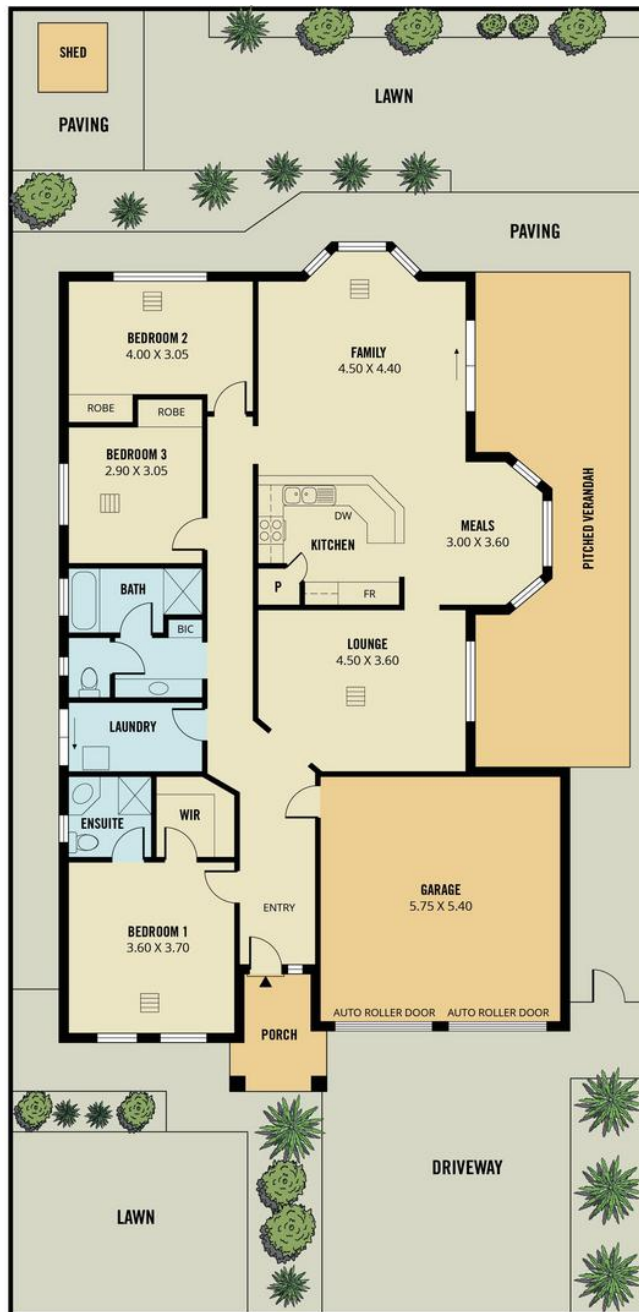
### LJ Hooker Greenwith | Golden Grove | Mawson Lakes | Modbury (08) 8289 6660

North East, Shop 2, 1007 North East Road, RIDGEHAVEN SA 5097  
[greenwithgoldengrove.ljhooker.com.au](mailto:greenwithgoldengrove.ljhooker.com.au) | [info@ljhsupport.com.au](mailto:info@ljhsupport.com.au)



**Disclaimer:** All information contained therein is gathered from relevant third parties sources. We cannot guarantee or give any warranty about the information provided. Interested parties must rely solely on their own enquiries.

**LJ Hooker Greenwith | Golden Grove  
 | Mawson Lakes | Modbury  
 (08) 8289 6660**



**BUTLER COURT**

**SITE PLAN  
(NOT TO SCALE)**

Scale in metres. This drawing is for illustration purposes only. All measurements are approximate and details intended to be relied upon should be independently verified. Produced by The Fotobase Group