



23 Brigalow Avenue, Blackwood

Packed With Potential

Positioned on a generous 812sqm allotment in a tightly held and highly sought-after location, this spacious family home presents an outstanding opportunity for growing families looking to secure their place in a welcoming neighbourhood.

Ready for its next chapter, the home offers a solid foundation with ample living space and the potential to add your own personal style and modern touches, creating a home your family can enjoy for many years to come.

Conveniently located close to local shopping, quality schools, public transport and everyday amenities, everything you need is within easy reach.

Designed with family living in mind, the home features a formal lounge and dining area, complimented by a spacious kitchen with breakfast bar overlooking the tiled family and meals area.

The generous main bedroom is privately positioned at the front of the home and includes a charming bay window, walk-in robe and ensuite. Three additional well sized bedrooms, including built-in robes to bedrooms two and three are serviced by a practical three-way family bathroom.

4 2 4

AUCTION

Sat 18th Jul @ 12:00AM

VIEW

Sat 4th Jul @ 2:00PM - 2:30PM

AGENTS

Jarad Henry
0418 842 701
jarad@ljhglenelgbrighton.com.au

Debbie Mundy
0401 597 482
debbie@ljhglenelgbrighton.com.au

AGENCY

LJ Hooker Glenelg | Brighton
(08) 8294 6000

All information contained therein is gathered from relevant third parties sources.
We cannot guarantee or give any warranty about the information provided.
Interested parties must rely solely on their own enquiries.



Additional features include a separate laundry, double lock-up garage with internal access and plenty of storage throughout.

Step outside to discover a paved entertaining area overlooking expansive backyard space, providing plenty of room for children to play, pets to roam or the opportunity to further enhance the outdoor lifestyle.

Offering size, location and endless potential, this is an exceptional opportunity to secure a substantial family home in one of the area's most popular residential pockets.

To submit an offer on this property visit this link:

Property Details:

Council: City of Mitcham

Council Rates: TBA

SA Water: TBA

House Size: 180 sqm

Land Size: 812 sqm (approx)

Year Built: 2000

The vendor's statement may be inspected at 76 Oaklands Road, Somerton Park for 3 consecutive business days immediately preceding the auction; and at the auction for 30 minutes before it starts.

For further information please contact Jarad Henry or Debbie Mundy.

Visit glenelgbrighton.ljhooker.com.au to view other LJ Hooker Glenelg | Brighton Listings.

Disclaimer: Neither the Agent nor the Vendor accept any liability for any error or omission in this advertisement.

Any prospective purchaser should not rely solely on 3rd party information providers to confirm the details of this property or land and are advised to enquire directly with the agent in order to review the certificate of title and local government details provided with the completed Form 1 vendor statement.

RLA 182909

MORE DETAILS

Property ID	QDMGW0
Property Type	House
House Size	180 m2
Land Area	812 m2

Jarad Henry 0418 842 701

Principal | Auctioneer | Sales Consultant |

jarad@ljhglenelgbrighton.com.au

Debbie Mundy 0401 597 482

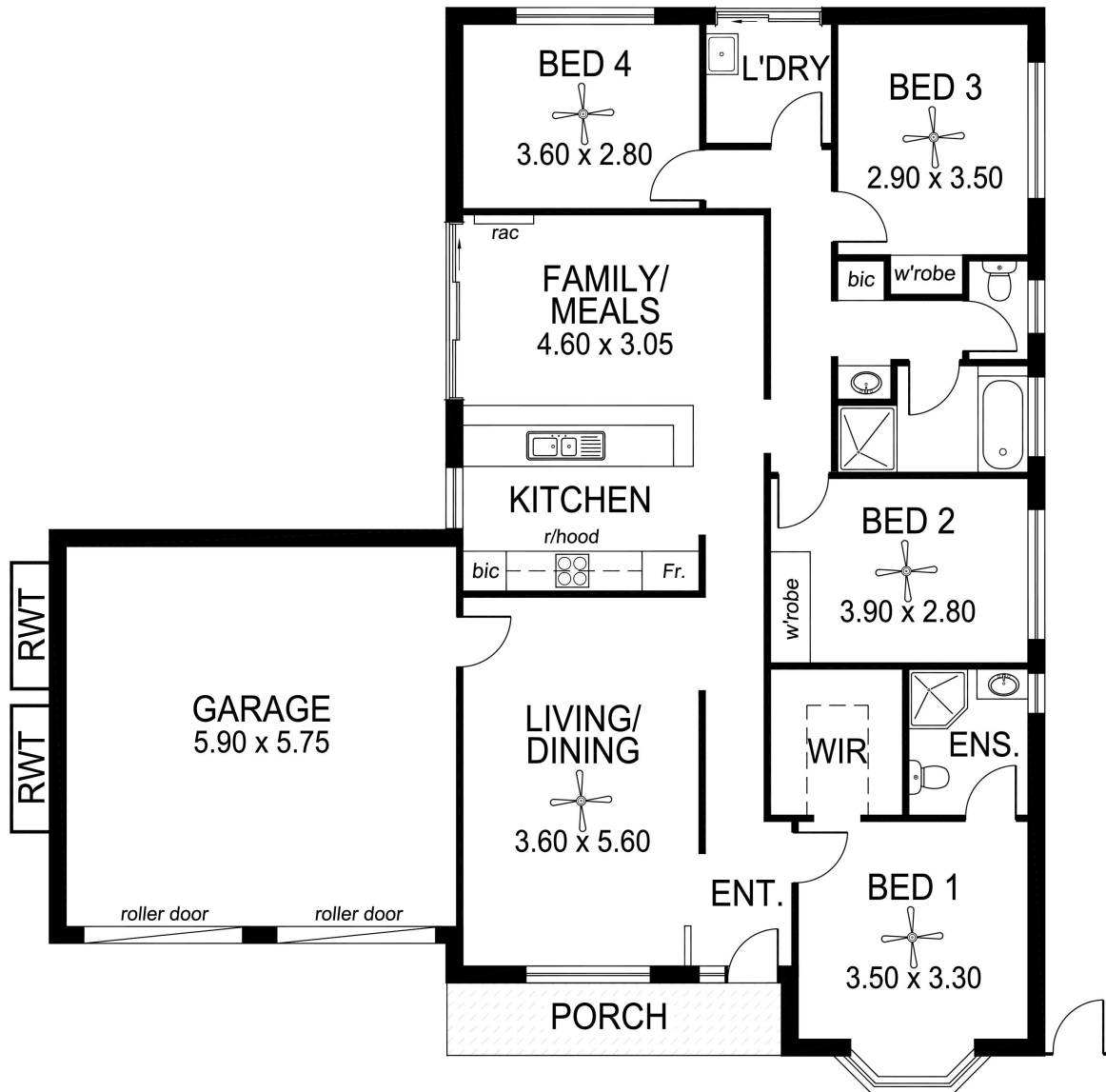
Co-Agent to Jarad Henry | debbie@ljhglenelgbrighton.com.au

LJ Hooker Glenelg | Brighton (08) 8294 6000

76 Oaklands Road, SOMERTON PARK SA 5044

glenelgbrighton.ljhooker.com.au | rebecca@ljhglenelgbrighton.com.au





TOTAL AREA:	180.55m ² /19.41sqs
(Estimate only)	(incl. porch & garage)

This drawing is for illustration purposes only. All measurements are approximate only and information intended to be relied upon should be independently verified.