



Blacktown, 2/9-13 Griffiths Street

Large Ground Floor Unit In Central Location

Presenting this 2 bedroom ground floor unit located within walking distance to Blacktown Hospital, Train Station, Shopping Centre and CBD.

Property Features:

- Two large bedrooms, both with mirrored built-in wardrobes and air conditioning to the master
- Neat and tidy kitchen with gas cooking and stone benchtops
- Open plan living and dining area with the comfort of air conditioning
- Oversized original but tidy bathroom
- Internal laundry with dryer
- Large balcony
- Secure underground single car spot
- Freshly painted
- Close to Local shops, Schools & Public transport



For Sale
Please Call

View
ljhooker.com.au/2CSUF8K

Contact
Clair Andree-Evarts
0414 944 554
candree-evarts.blacktown@ljhooker.com.au



LJ Hooker Blacktown
(02) 9621 1222

Disclaimer: All information contained therein is gathered from relevant third parties sources. We cannot guarantee or give any warranty about the information provided. Interested parties must rely solely on their own enquiries.

Strata approx. \$708 per quarter
Council approx. \$391 per quarter
Water \$160 per quarter

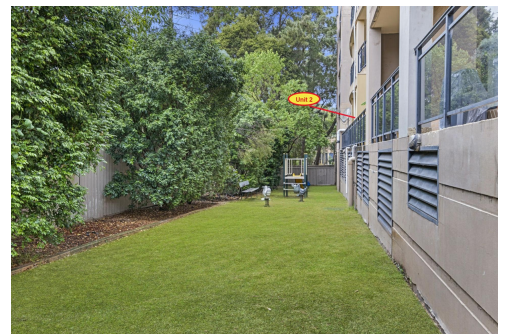
All information contained therein is gathered from third party sources. We cannot guarantee or give any warranty about the information provided. Interested parties must rely on their own searches.

More About this Property

Property ID	2CSUF8K
Property Type	Unit
Land Area	130 m ²
Including	Air Conditioning Balcony Floorboards Built-in-Robes

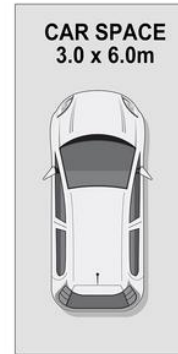
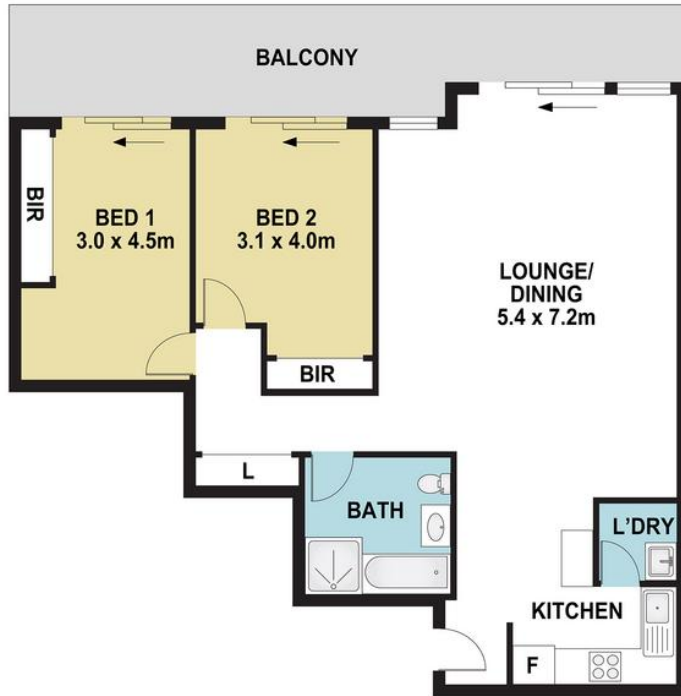
Clair Andree-Evarts 0414 944 554
Licensed Real Estate Agent | candree-evarts.blacktown@ljhooker.com.au

LJ Hooker Blacktown (02) 9621 1222
61 Main Street, BLACKTOWN NSW 2148
blacktown.ljhooker.com.au | blacktown@ljhooker.com.au



LJ Hooker Blacktown
(02) 9621 1222

Disclaimer: All information contained therein is gathered from relevant third parties sources. We cannot guarantee or give any warranty about the information provided. Interested parties must rely solely on their own enquiries.



Scale in metres, indicative only. Dimensions are approximate.

2-9/13 GRIFFITHS STREET, BLACKTOW



LJ Hooker