

2 Courtleigh Place, Blackmans Bay

Neat, Comfortable & Close to the Coast

Tucked away in a quiet cul-de-sac, this well-presented three-bedroom, one-bathroom home offers a relaxed lifestyle in one of Hobart's most sought-after seaside suburbs.




Step inside and you'll find a light-filled living area, functional kitchen, and dining space that flows easily for everyday living. All three bedrooms are well-sized, the bathroom is tidy and practical, and the home is kept comfortable year-round with electric heating.

The level block provides low-maintenance grounds with room for outdoor enjoyment, making it an easy home to live in and maintain.

Located just minutes from Blackmans Bay Beach, local shops, quality schools and an easy commute to Hobart's CBD, this property represents a fantastic opportunity for first-home buyers, downsizers or investors looking to secure a home in a prime position.

Key features:

3 bedrooms, 1 bathroom

3  1  0 

FOR SALE
Offers Over \$629,000

AGENTS

Simon Parsons
0438 296 830
sparsons@ljhookerpinnacle.com

Taya Parsons
0424 143 648
tparsons@ljhookerpinnacle.com

AGENCY

LJ Hooker Pinnacle Property
(03) 6272 8177

All information contained therein is gathered from relevant third parties sources.
We cannot guarantee or give any warranty about the information provided.
Interested parties must rely solely on their own enquiries.

 **LJ Hooker**

Neat, tidy and easy to maintain

Quiet cul-de-sac location

Close to beach, schools, shops and services

Great first home, downsizer or investment option

Homes in Blackmans Bay are always in strong demand – contact Simon or Taya today to arrange your inspection time.

MORE DETAILS

Property ID	BHJ1F
Property Type	House
House Size	102 m2
Land Area	632 m2

Simon Parsons 0438 296 830

Owner | Managing Director | sparsons@ljhookerpinnacle.com

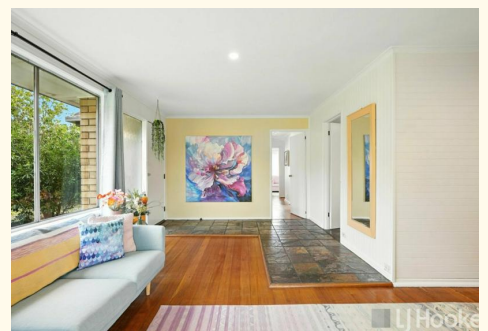
Taya Parsons 0424 143 648

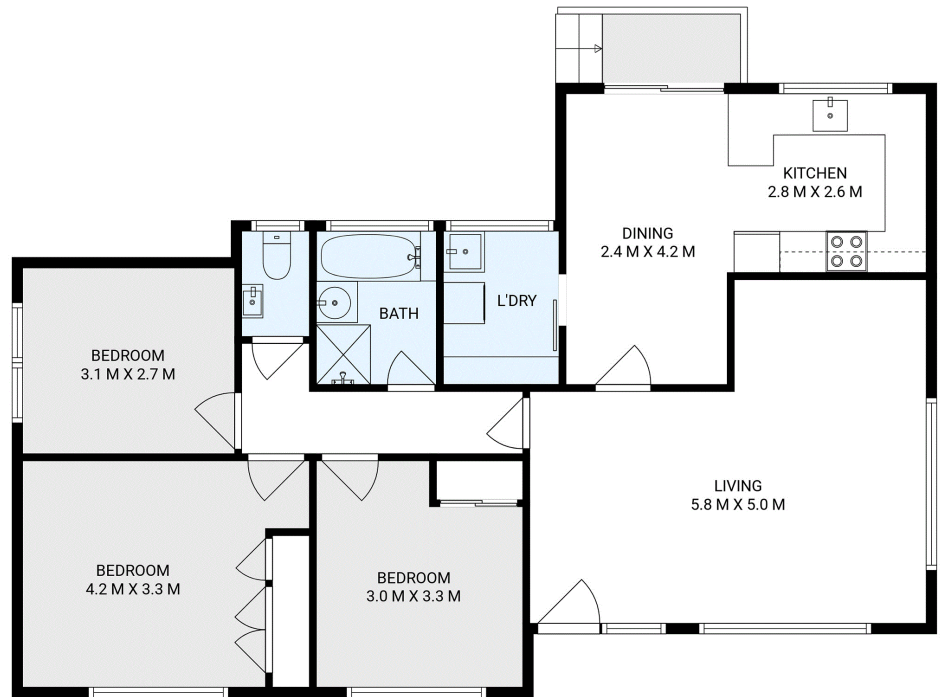
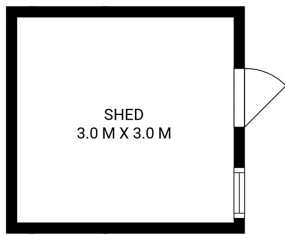
Owner | Business Coordinator | tparsons@ljhookerpinnacle.com

LJ Hooker Pinnacle Property (03) 6272 8177

402 Main Road, GLENORCHY TAS 7010

pinnacleproperty.ljhooker.com.au | hello@ljhpinnacle.com.au





2 Courtleigh Place, Blackmans Bay

House area: 99 sqm

Areas and dimensions are approximate and therefore this floor plan should only be used for illustrative purposes.

Real Estate Marketing by nextcreative.com.au

