



Binningup, 28 Tuscany Green

Escape to Binningup - Brand New Coastal Home + Bonus Shed

Leave the hustle and bustle behind and embrace the peaceful seaside lifestyle in beautiful Binningup. This brand new, never-lived-in home, built by Celebration Homes, has been thoughtfully designed for relaxed living. It features four bedrooms, two stylish bathrooms, and a double remote-control garage. With timeless neutral tones, wood-look flooring, and open-plan living, it's the perfect place to unwind and enjoy coastal life.

Set on a generous 624m² block with the beach just a leisurely stroll away, this property offers the ideal combination of space, style, and location to turn your sea-change dreams into reality.

Property Features include:

- 4 bedrooms and 2 bathrooms
- Master suite with walk-in robe and private ensuite



Disclaimer: All information contained therein is gathered from relevant third parties sources. We cannot guarantee or give any warranty about the information provided. Interested parties must rely solely on their own enquiries.

4 2 2

For Sale
Please Call

View
ljhooker.com.au/17R8HND

Contact
Pat Shine
0438 263 068
pat.shine@ljhsouthwest.com.au

LJ Hooker Property South West WA
(08) 9791 6880

- Built-in robes to all additional bedrooms
- Main bathroom with both shower and bathtub
- Modern kitchen with stainless steel appliances, island bench, and walk-in pantry
- Open-plan living and dining area
- Undercover alfresco-perfect for entertaining
- Blank canvas backyard ready for your personal touch
- Double remote-control garage for secure, convenient parking

****Bonus Inclusion - Brand New Shed (Valued at \$16,655!)****

A brand new 4m x 6m Colorbond shed with a 2.7m high gable roof- fully paid for by the seller and included in the sale price - will be installed at the buyer's preferred location on the property (subject to cancel approval), adding incredible value and flexibility.

Perfectly positioned just moments from the ocean, this home is your gateway to sun-soaked days, sea breezes, and laid-back living. Whether you're searching for a family home or a coastal retreat, this is a rare opportunity to secure your slice of paradise.

Don't miss out! Contact Pat Shine today to arrange your inspection!

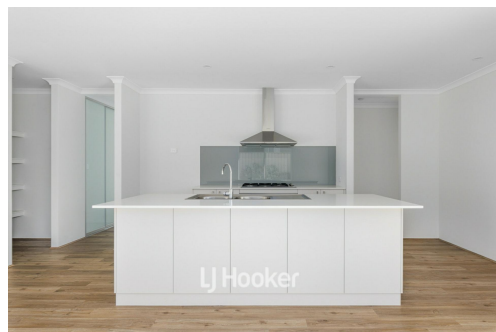
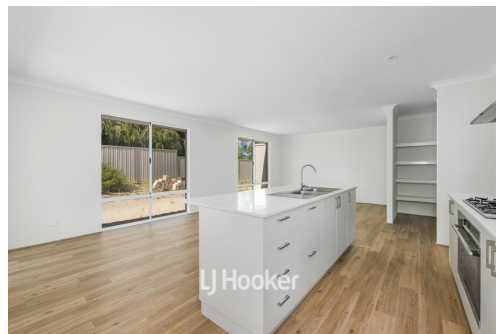
Disclaimer: Whilst every care has been taken in the preparation of this advertisement and the approximate outgoings, all information supplied by the seller and the seller's agent is provided in good faith. Prospective purchasers are encouraged to make their own enquiries to satisfy themselves on all pertinent matters. Images are for illustrative purposes.

More About this Property

Property ID	17R8HND
Property Type	House
Land Area	624 m2

Pat Shine 0438 263 068
Sales Consultant | pat.shine@ljhsouthwest.com.au

LJ Hooker Property South West WA (08) 9791 6880
130 Victoria Street, BUNBURY WA 6230
southwestwa.ljhooker.com.au | bunbury@ljhsouthwest.com.au



Disclaimer: All information contained therein is gathered from relevant third parties sources. We cannot guarantee or give any warranty about the information provided. Interested parties must rely solely on their own enquiries.

LJ Hooker Property South West WA
(08) 9791 6880

Ultimate 205 Ultimate Range

Plans are to be read in conjunction with Builders Standard Specification, Addenda & Engineers

Wind Zone - N1

Control Zone - R4

BAL Rating - NA

30c ceilings throughout unless otherwise noted

Client Note
All dimensions quoted on these drawings relate to brickwork unless otherwise stated. All other finishes will alter the final dimensions. Care should be taken to consider such differences when calculating clearances required for future fittings.

RWP locations shown are approximate and are to be positioned at the roof plumber's discretion.

