

Bilinga, 5/135 Golden Four Drive

SOLD BY ERIN KING & RACHAEL SHERRIFF



For Sale
Offers over \$2,050,000

View
l.jhooker.com.au/KEFHEZ

Contact
Erin King
0439 060 535
erin@l.jhookerct.com.au
Rachael Sherriff
0412 880 337
rachael@l.jhookerct.com.au

Welcome to Villa 5 "Nusa", a rare jewel nestled within an exclusive enclave in Bilinga, offering an unparalleled standard of refined coastal luxury. Designed by the acclaimed Mi Design Studio, this architectural triumph redefines opulent beachfront living, capturing the essence of serene elegance and sophistication. Spanning a generous 243sqm across four immaculate levels, this residence sets the stage for an extraordinary lifestyle, with sweeping coastal and rooftop views towards Coolangatta.

A striking blend of modern design and coastal sophistication, Villa 5 is a sanctuary for the discerning few, harmoniously blending architectural ingenuity with flawless interior finishes. Completed in February 2024, every inch of this residence has been thoughtfully crafted to offer both timeless beauty and modern comfort. A private lift provides effortless access to all levels, ensuring ease and privacy as you move between the villa's expansive living spaces.



LJ Hooker Coolangatta | Tweed
(07) 5536 5577

Disclaimer: All information contained therein is gathered from relevant third parties sources. We cannot guarantee or give any warranty about the information provided. Interested parties must rely solely on their own enquiries.

On the first landing, designed for the culinary enthusiast, the chef-inspired kitchen is equipped with a full suite of Miele appliances, including dual built-in pyrolytic ovens, an induction cooktop, and an integrated dishwasher. The stone island bench with exquisite timber panelling, paired with brushed brass accents is finished with a butler's pantry ensuring ample storage creates an ambiance of refined luxury mixed with functionality. The seamless flow into the light-filled living and dining areas sets the tone for effortless entertaining.

The opulent king-size master suite serves as a private retreat, offering a serene Juliette balcony that captures ocean vistas. A spacious walk-in robe and a lavish ensuite, complete with double vanity, stone benchtops, brushed brass tapware, and luxurious terrazzo feature tiles, add a touch of timeless sophistication. Each of the two additional bedrooms exudes comfort and elegance, with custom cabinetry and spacious built-in wardrobes with an additional luxe bathroom to service both bedrooms.

The top-floor with direct access to the private rooftop terrace, offers a flexible space that can be tailored to your needs. Whether it's a guest suite, home office, or media room, this versatile area elevates the home's potential, with the soothing sound of the waves and ocean views setting the scene for ultimate relaxation or entertainment. The adjoining exclusive rooftop terrace, perched above it all, features a stone-topped kitchenette and servery, this elevated retreat is an entertainer's dream, perfect for hosting friends while basking in the serenity of coastal vistas.

Every detail in Villa 5 speaks to a commitment to luxury and thoughtful details including a private lift servicing all levels, ensuring seamless access between floors.

Key Features:

- Four floors serviced by internal lift
- 3 Bedrooms, 2 bathrooms, 2 powder rooms and an oversized double lock up garage
- Engineered oak timber flooring throughout, complemented by a solid oak timber staircase, makes a striking statement.
- Custom plantation shutters and sheer curtains add to the home's airy, coastal feel.
- High-end brushed brass fixtures and finishes, designed to withstand the coastal climate, elevate every room.
- Terrazzo-inspired tiles and 100% wool carpet in the bedrooms add a sophisticated touch of elegance.
- Oversized double garage featuring under-stair storage, a spacious laundry, and ample cupboard space throughout.
- A quality suspended slab build with treated acoustics
- Ducted air conditioning, ceiling fans and down lights throughout
- Pet friendly complex with a fully enclosed courtyard with a Crimsafe pet door

'Nusa' Complex Inclusions:

- Boutique block of only 6 residences
- Exceptional coastal location, just 200 meters from the golden sands of Bilinga Beach.
- Stroll along the uninterrupted ocean pathway extending from Snapper Rocks to Currumbin Alley
- Easy Access to enjoy the sister suburbs of Tugun and Kirra including the bustling Tugun Market Co, Kirra Beach Hotel, and the renowned Siblings all just minutes away.
- Short walk to Bilinga and North Kirra Surf Life Saving Clubs



LJ Hooker Coolangatta | Tweed
(07) 5536 5577

Disclaimer: All information contained therein is gathered from relevant third parties sources. We cannot guarantee or give any warranty about the information provided. Interested parties must rely solely on their own enquiries.

- Communal outdoor shower
- Pet wash bay

Where to from Here?

- Gold Coast International Airport and Southern Cross University are a mere 1-minute drive
- John Flynn Private Hospital 3-minute drive
- Public transport is right at your doorstep, and with easy access to the M1 motorway
- For families: situated in the catchment area for the prestigious Palm Beach Currumbin State High School and Currumbin State School.
- Within easy reach of some of the Gold Coast's top private schools, including Lindisfarne Anglican Grammar and St Andrew's Lutheran College, both just 15 minutes away.

Villa 5 "Nusa" offers a rare opportunity to own an oceanfront sanctuary with house proportions that blends cutting-edge design, unparalleled craftsmanship, and an enviable low maintenance coastal lifestyle. Experience the finest in beachfront luxury —a home that promises the ultimate in exclusivity, tranquillity, and sophistication.

Want to know more?

Contact us to receive the property book with outgoings, floorplan and recent sales within the surrounding area to give you some guide of value.

Follow Erin King on Instagram [@erinking.ljhooker](#)

Disclaimer:

All information (including but not limited to the property area, floor size, price, address and general property description) is provided as a convenience to you, and has been provided to LJ Hooker by third parties. LJ Hooker is unable to definitively confirm whether the information listed is correct or 100% accurate. LJ Hooker does not accept any liability (direct or indirect) for any injury, loss, claim, damage or any incidental or consequential damages, including but not limited to lost profits or savings, arising out of or in any way connected with the use of any information, or any error, omission or defect in the information, contained on the Website. Information contained on the Website should not be relied upon and you should make your own enquiries and seek legal advice in respect of any property on the Website. Prices displayed on the Website are current at the time of issue, but may change.



LJ Hooker Coolangatta | Tweed
(07) 5536 5577

Disclaimer: All information contained therein is gathered from relevant third parties sources. We cannot guarantee or give any warranty about the information provided. Interested parties must rely solely on their own enquiries.

More About this Property

Property ID	KEFHEZ
Property Type	Unit
House Size	243 m ²
Including	Ensuite Air Conditioning Toilets (4) Courtyard Balcony Dishwasher Built-in-Robes Fully Fenced Remote Garage

Erin King 0439 060 535

Sales & Marketing Specialist | erin@ljhookerct.com.au

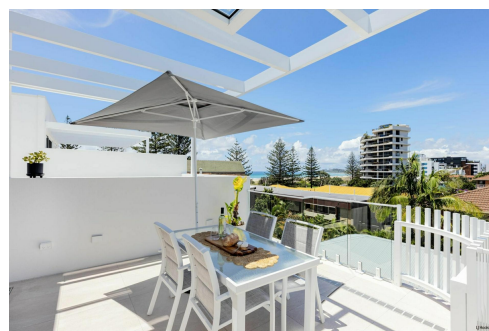
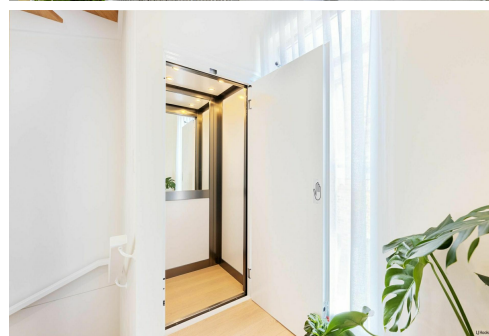
Rachael Sherriff 0412 880 337

Sales & Marketing Specialist | rachael@ljhookerct.com.au

LJ Hooker Coolangatta | Tweed (07) 5536 5577

5/100 Griffith Street, COOLANGATTA QLD 4225

coolangattatweed.ljhooker.com.au | enquiries@ljhookerct.com.au



Disclaimer: All information contained therein is gathered from relevant third parties sources.
We cannot guarantee or give any warranty about the information provided. Interested parties must rely solely on their own enquiries.

LJ Hooker Coolangatta | Tweed
(07) 5536 5577



Erin King &
Rachael Sherriff

5/135
GOLDEN FOUR DRIVE
Bilinga

Internal Area	205m ²
External Area	26m ²
Yard	12m ²
Total Area	243m ²

3 + Studio

2 + 2 Powder

2

BIANCO Social Lab

Whilst every effort has been undertaken for 100% accuracy, Plans should not be relied on solely. All images/finishes are for illustrative purposes only and are intended to depict the general layout only. No plans/site plans represented are to scale. Areas have been rounded off where appropriate. Area calculations are based on third party calculations. Unauthorized use or modification of this plan is strictly prohibited without the explicit consent of Bianca Design Co.

