



LJ Hooker



Bilinga, 4/285 Golden Four Drive

Absolute Beachfront Living: A Meticulously Renovated 3-Bedroom Coastal Retreat

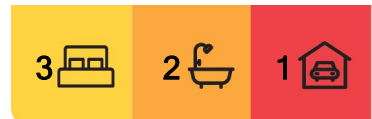
Discover designer beachfront luxury in this stunning high-end renovation with a seamless fusion of contemporary design and nostalgic earthy elements. This fully renovated 3 bedroom residence really is a rare offering in Bilinga nestled within a boutique block of just 8 units with direct beachfront access.

As you enter inside, you will notice the curved feature wall, finished in Venetian plaster which sets the tone for immaculate design elements flowing throughout.

Bathed in natural light the open-plan living area is enhanced by the warmth of European Oak wood flooring and thoughtfully selected designer details including panelled walls, scalloped curved light sconces, ducted air conditioning combined to create an atmosphere of refined elegance. The 'Sonos' ceiling stereo sound system ensures every moment is accompanied by the perfect soundtrack.



Disclaimer: All information contained therein is gathered from relevant third parties sources. We cannot guarantee or give any warranty about the information provided. Interested parties must rely solely on their own enquiries.



For Sale
Contact Agent

View
By Appointment

Contact
Erin King
0439 060 535
erin@ljhookerct.com.au
Rachael Sherriff
0412 880 337
rachael@ljhookerct.com.au

LJ Hooker Coolangatta | Tweed
(07) 5536 5577

Your choice of two balconies, the first with access from the living area offering breathtaking ocean and beach views, ideal for entertaining, large enough for an outdoor lounge/dining space and barbeque. The second overlooking tropical gardens to Mount Warning from the master bedroom.

The kitchen is as practical as it is beautiful, featuring earthy-toned mosaic tile finishes, a striking curved island, and a large stone peninsula providing abundant storage and preparation space. High-end appliances, including a Fisher & Paykel oven, stovetop, and integrated dishwasher, enhance the sophisticated design, while the warm wood cabinetry adds a timeless touch.

Adjacent to the kitchen is a versatile multi-purpose room, ideal as a nursery, extra bedroom, or home office. With wool carpet and engineered wood feature wall panels, this space continues the theme of thoughtful design and luxurious finishes throughout the home.

The master suite is an opulent retreat, featuring a floating panelled wall, ambient ceiling-mounted lamps, and floor-to-ceiling cabinetry with earthed wood detailing. The private balcony with hinterland views of Mount Warning is large enough to accommodate a lounge setting and micro infrared sauna for the ultimate relaxation. The ensuite is a sanctuary of sophistication, showcasing terrazzo tiles, a floating vanity, and a walk-in shower with built-in niche.

A second beautifully appointed bathroom includes a freestanding bath and shower, complete with on-trend terrazzo tiles and a floating vanity. The guest bedroom, with generous storage and quality wool carpets, offers a private haven, while an intelligently designed hidden internal laundry area maximizes storage and functionality.

Recent upgrades to the building: New rendered fencing, modern aluminium gates, and meticulously landscaped grounds leading directly to the beach. The property also includes one secure underground carpark, providing ultimate convenience and peace of mind.

This absolute beachfront abode is only moments to the waters edge, and a short stroll to village shops, cafes, restaurants and parks.

Live the beachside lifestyle without compromise.

Property features:

- Level 1 of boutique building 'Caool Court' only 8 apartments
- Direct beachfront access, no need to cross the road
- Stunning high-end completely renovated property with premium finishes
- Side balcony with ocean and beach views, rear balcony with garden & hinterland views
- Open plan living with high-end finishes and coastal design
- 3 beautifully appointed bedrooms, master with ensuite and balcony
- 2 luxurious bathrooms with floor to ceiling tiling, including a designer ensuite
- Generous storage throughout, including island storage in the kitchen
- Self-contained internal laundry, powder room
- European Oak Flooring, Ducted AC, Inbuilt 'Sonos' Sound System
- Secure underground carpark with intercom access



LJ Hooker Coolangatta | Tweed
(07) 5536 5577

Disclaimer: All information contained therein is gathered from relevant third parties sources. We cannot guarantee or give any warranty about the information provided. Interested parties must rely solely on their own enquiries.

- Recently upgraded complex, low body corporate fees

Location features:

- Direct access to Bilinga beach and ocean pathway
- Tessa's On The Beach' nearby for beachside family and friend visits
- Patrolled beaches within easy reach
- Short flat (15-20) minute stroll to Kirra's thriving cafes & continue on around the point
- Short drive to major shopping at Coolangatta / Tweed
- A short drive to Gold Coast International Airport and Southern Cross University

Building:

Building name: Carool Court
Building built: 1988
Land size: 1,027m2 allotment
Consists of: 8 units, ripe for future potential redevelopment

Additional:

Council Rates: TBA
Water Rates: \$444.97 per 3 months (approximately)
Body Corporate: \$71 per week (approximately)

Embrace the pinnacle of coastal luxury and make this meticulously designed beachfront haven your own. This rare opportunity is not to be missed.

Want to know more?

Contact us to receive the property book with outgoings, floorplan and recent sales within the surrounding area to give you some guide of value.

Follow Erin King on Instagram @erinking.ljhooker

Disclaimer:

All information (including but not limited to the property area, floor size, price, address and general property description) is provided as a convenience to you, and has been provided to LJ Hooker by third parties. LJ Hooker is unable to definitively confirm whether the information listed is correct or 100% accurate. LJ Hooker does not accept any liability (direct or indirect) for any injury, loss, claim, damage or any incidental or consequential damages, including but not limited to lost profits or savings, arising out of or in any way connected with the use of any information, or any error, omission or defect in the information, contained on the Website. Information contained on the Website should not be relied upon and you should make your own enquiries and seek legal advice in respect of any property on the Website. Prices displayed on the Website are current at the time of issue, but may change.



LJ Hooker Coolangatta | Tweed
(07) 5536 5577

Disclaimer: All information contained therein is gathered from relevant third parties sources. We cannot guarantee or give any warranty about the information provided. Interested parties must rely solely on their own enquiries.

More About this Property

Property ID	KCNHEZ
Property Type	Unit
Including	Ensuite Air Conditioning Ducted Cooling Ducted Heating Intercom Balcony Dishwasher Outdoor Entertaining Floorboards Built-in-Robes Fully Fenced

Erin King 0439 060 535

Sales & Marketing Specialist | erin@ljhookerct.com.au

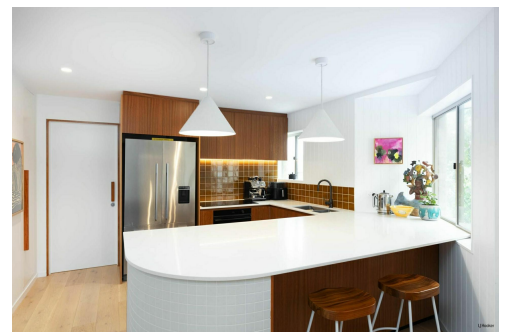
Rachael Sherriff 0412 880 337

Sales & Marketing Specialist | rachael@ljhookerct.com.au

LJ Hooker Coolangatta | Tweed (07) 5536 5577

5/100 Griffith Street, COOLANGATTA QLD 4225

coolangattatweed.ljhooker.com.au | enquiries@ljhookerct.com.au



LJ Hooker Coolangatta | Tweed
(07) 5536 5577

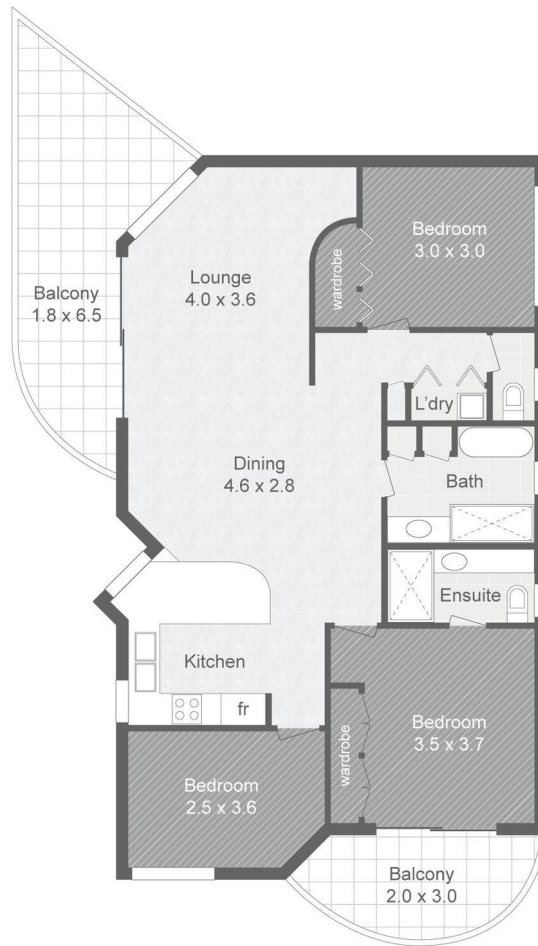
Disclaimer: All information contained therein is gathered from relevant third parties sources. We cannot guarantee or give any warranty about the information provided. Interested parties must rely solely on their own enquiries.

4/285 Golden Four Dr
Bilinga

BED 3
BATH 2
CAR 1

INTERNAL 89sqm
EXTERNAL 18sqm
CARSPACE 18sqm

TOTAL 125sqm



Plans shown are for presentation purposes only and are not part of any legal document or title. They are subject to errors, omissions, inaccuracies and should not be used as a sole and accurate reference. Interested parties should make their own inquiries using independent sources.