



7 Birubi Crescent, Bilgola Plateau

Ready to Enjoy with Room to Reimagine

A solid 70s home with excellent bones is always an enticing prospect for those looking to add sure-fire value to a prime, coastal location. This one's got opportunity written all over it; nicely presented and ready to move straight in, a creative refresh will unlock the potential of its commanding corner position, Pittwater views and a due north aspect.

Capturing the cross-breezes off the waterfront, the split-level design offers a super-functional layout with high, raked ceilings, a choice of living and dining zones and a retro, dine-in kitchen; full-length decks across both levels soak up the light and views, and there's a sparkling swimming pool in back. With a bit of imagination and cosmetic updates, it can be transformed into a fantastic family home, all within a short stroll of Bilgola Primary School, cafes and the local IGA.

- Family-friendly location with due north aspect, Pittwater views
- Good bones and well-presented with a highly-functional layout
- Prime corner block of 721sqm with level lawns + sunlit pool
- Flexible interiors open to full-length decks on both levels
- Immaculate 1970s kitchen joined by a casual dining area
- Each double bedroom opens to deck and includes built-ins
- Primary bedroom features ensuite, walk-in robe and deck access

All information contained therein is gathered from relevant third parties sources. We cannot guarantee or give any warranty about the information provided. Interested parties must rely solely on their own enquiries.

3 2 2

FOR SALE
Contact Agent

AGENTS

Angus Abrahams
0488 007 236
angus.abrahams@ljhavalon.com.au

Jonathan Gosselin
0488 011 870
jono.gosselin@ljhavalon.com.au

AGENCY

LJ Hooker Avalon Beach
(02) 9973 2999

LJ Hooker

- Ready to move straight in while making upgrades at a later date
- Superb potential to capitalise on a sensational coastal setting
- Peaceful and family-friendly; short walk to school, cafes, IGA

MORE DETAILS

Property ID WQAF58
Property Type House
Land Area 721 m2

Angus Abrahams 0488 007 236

Licensed Real Estate Agent | angus.abrahams@ljhavalon.com.au

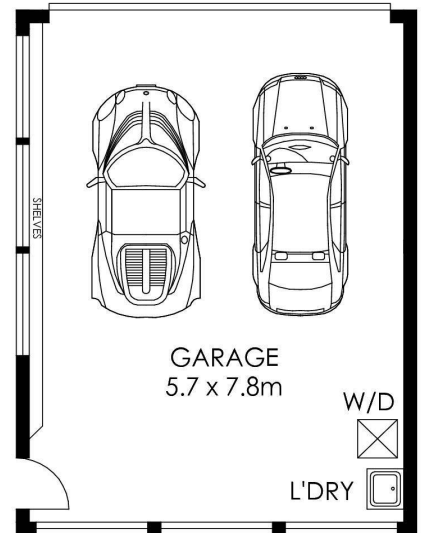
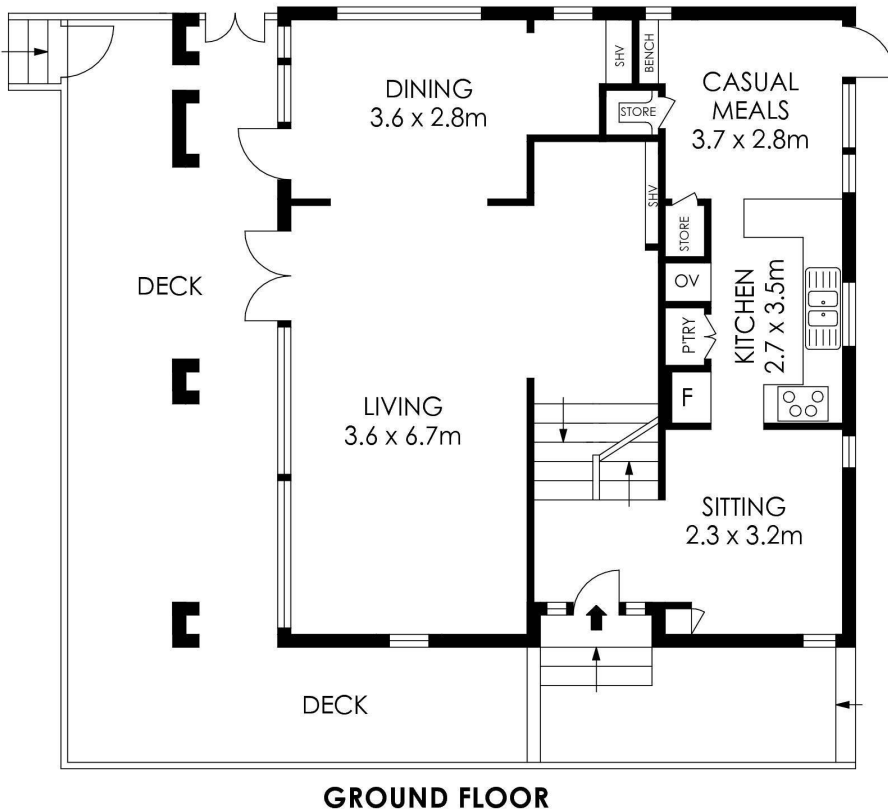
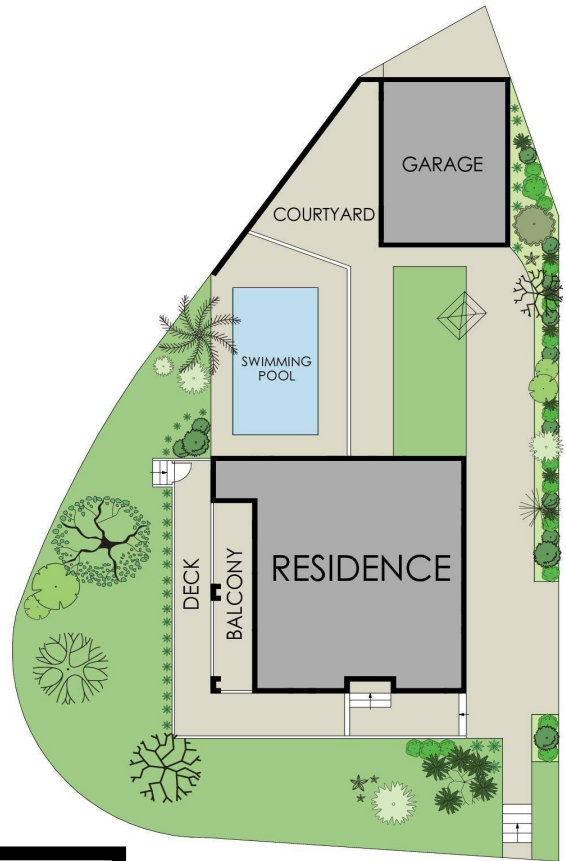
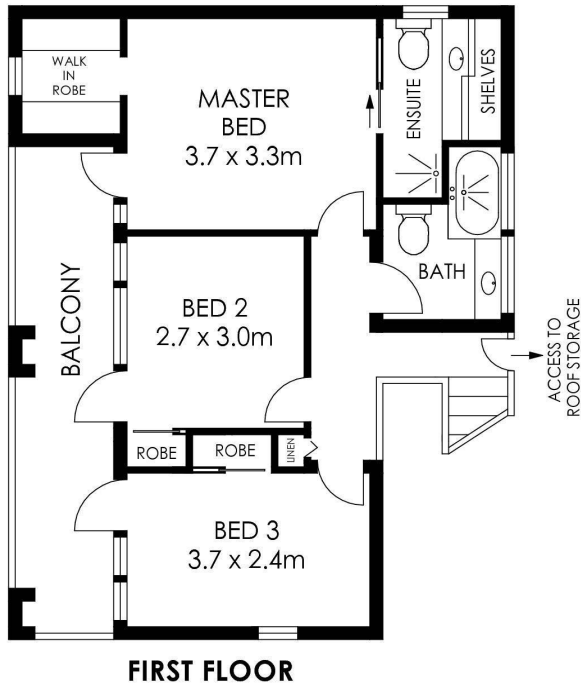
Jonothan Gosselin 0488 011 870

Licensed Real Estate Agent | jono.gosselin@ljhavalon.com.au

LJ Hooker Avalon Beach (02) 9973 2999

64 Old Barrenjoey Road, AVALON BEACH NSW 2107
avalonbeach.ljhooker.com.au | avalonbeach@ljhooker.com.au





APPROX. INTERNAL AREA = 167 m²
 APPROX. EXTERNAL AREA = 65 m²
 TOTAL = 232 m²
 LAND SIZE = 721 m²

PLANS SHOWN ONLY INDICATIVE OF LAYOUT. DIMENSIONS ARE APPROXIMATE.



7 Birubi Crescent, Bilgola Plateau



All information contained therein is gathered from relevant third parties sources.
 We cannot guarantee or give any warranty about the information provided.
 Interested parties must rely solely on their own enquiries.

