

Bilgola Plateau, 48 Bilwara Avenue

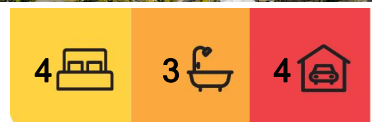
Exceptional Opportunity: Renovator's Dream

Are you ready to transform a house into your dream home? This five bedroom gem in the coveted Bilgola Plateau awaits your vision and creativity. Offering abundant space, a prime location, size on over 900sqm of near level land with a fantastic pool, this property is a rare find with incredible potential for those ready to make their mark.

Property Highlights:

Spacious Four Bedroom Layout: With Four generously sized bedrooms & Study or utility room, this home provides ample room for large or growing families. The layout supports a range of living arrangements, making it perfect for multi-generational families who need separate living areas or extended family members who desire extra space.

Ideal for Renovation Enthusiasts: This property is a blank canvas ready for your creative touch. Whether you're looking to modernise, expand, or completely redesign, the



For Sale

Sold By Asha Kerr

View

ljhooker.com.au/2VNSF6K

Contact

Asha Kerr

0451 635 535

akerr@ljhmv.com.au



Disclaimer: All information contained therein is gathered from relevant third parties sources.

We cannot guarantee or give any warranty about the information provided. Interested parties must rely solely on their own enquiries.

LJ Hooker Mona Vale
(02) 9979 8000

possibilities are endless. Tap into your renovation dreams and increase the home's value while creating a space that perfectly suits your lifestyle.

Inviting Pool Area: Dive into your private oasis with a sparkling pool, perfect for relaxing, entertaining, or enjoying a refreshing swim on hot summer days. The pool area offers an excellent opportunity to create a beautiful outdoor retreat with space for lounging, dining, and enjoying the serene surroundings.

Prime Location: Enjoy the best of both worlds with excellent schooling options nearby and easy access to the beautiful Pittwater. Families will appreciate the convenience of top-rated schools within walking distance, while water lovers will relish the proximity to Pittwater's scenic beaches and outdoor activities.

Surfer's Haven: For surfing enthusiasts, this property is just a stone's throw away from some of the area's best surf spots. Ride the waves, soak up the sun, and make the most of the coastal lifestyle of the Northern Beaches.

Multi-Generational Living: Designed with flexibility in mind, this home is well-suited for multi-generational living. Create distinct living zones, convert rooms into private retreats, or establish an in-law suite - all under one roof.

Expansive Outdoor Space: The property features ample outdoor space, offering potential for garden landscaping, additional entertaining areas, or further enhancement of the pool area. Design your outdoor oasis and enjoy the best of indoor-outdoor living.

Family-Friendly Community: Bilgola is renowned for its welcoming community and our little school on the hill. Experience a lifestyle that balances tranquility with convenience, and immerse yourself in a vibrant, family-oriented neighbourhood.

This home is a canvas for your vision and a rare opportunity to craft a custom home in a prime location with the added luxury of a pool. Contact us today to explore the potential of this exciting project and take the first step toward making this house your home.

Disclaimer:

All information contained herewith, including but not limited to the general property description, price and the address, is provided to LJ Hooker Mona Vale by third parties. We have obtained this information from sources we believe to be reliable; however, we cannot guarantee its accuracy. The information contained herewith should not be relied upon and you should make your own enquiries and seek advice in respect of this property or any property on this website.



LJ Hooker Mona Vale
(02) 9979 8000

Disclaimer: All information contained therein is gathered from relevant third parties sources. We cannot guarantee or give any warranty about the information provided. Interested parties must rely solely on their own enquiries.

More About this Property

Property ID	2VNSF6K
Property Type	House
Land Area	948 m ²

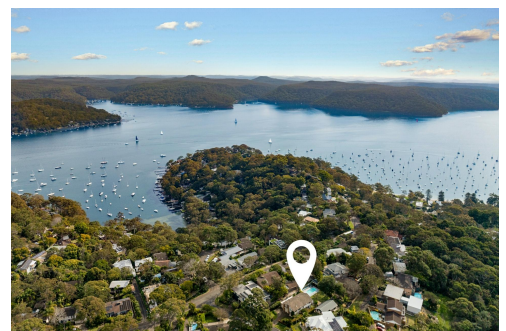
Asha Kerr 0451 635 535

Licensed Real Estate Agent | akerr@ljhmv.com.au

LJ Hooker Mona Vale (02) 9979 8000

3/18 Bungan Street, MONA VALE NSW 2103

monavale.ljhooker.com.au | monavale@ljhmv.com.au



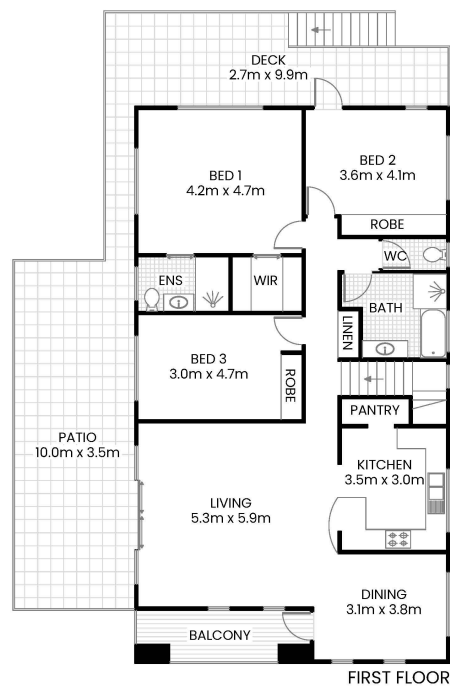
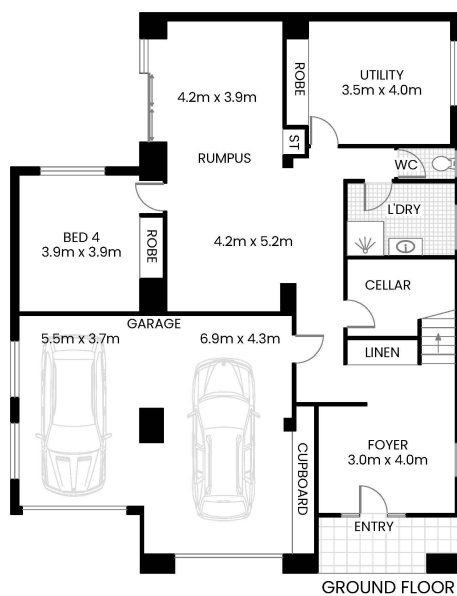
Disclaimer: All information contained therein is gathered from relevant third parties sources. We cannot guarantee or give any warranty about the information provided. Interested parties must rely solely on their own enquiries.

**LJ Hooker Mona Vale
(02) 9979 8000**



SITE PLAN

48 Bilwara Avenue Bilgola Plateau



INTERNAL AREA 300m² APPROX.
INCL GARAGE
EXTERNAL AREA 74m² APPROX.
TOTAL AREA 374m² APPROX.



The site plan and floor plan are not to scale; measurements are indicative and in meters. Bushes and trees are placed for illustration purposes. Plans should not be relied on. Interested parties should make and rely on their own enquire. All other information provided has been collected from reliable sources but cannot be guaranteed for accuracy.



LJ Hooker Mona Vale
(02) 9979 8000

Disclaimer: All information contained therein is gathered from relevant third parties sources. We cannot guarantee or give any warranty about the information provided. Interested parties must rely solely on their own enquiries.