




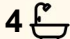

328 Lower Plateau Road, Bilgola Plateau

## A Home Built Around Light, Water and Quiet Luxury

Set on a generous 765sqm corner block overlooking Pittwater, this home is designed for both comfort and wellbeing. While the views are a standout feature, it's the sense of light, space and effortless flow that truly defines the home. Inside, travertine floors and open-plan living create a warm, relaxed atmosphere, while a thoughtfully updated layout connects seamlessly with the outdoors. At the centre of the home is an indoor pool that opens to the sky. By day, it draws in sunlight, while by night it becomes a place to unwind under the stars. A Jacuzzi spa and three-person sauna complete the space, creating a rhythm of living that feels more like a retreat than a residence. Accommodation is generous and flexible, with six bedrooms including two with en-suites, while the lower level offers versatility as a rumpus, studio or private retreat for guests, work or independent living (STCA). Outside, an alfresco terrace captures sweeping Pittwater views, complemented by low-maintenance gardens, an oversized garage, wine cellar, workshop, ducted air conditioning and solar power, all positioned moments from Bilgola Plateau village, Clareville Beach and Bilgola Plateau Public School.

Features Include:

- Generous 765sqm corner block overlooking Pittwater
- Private wellness retreat with pool open to the sky and stars

6  4  3 

### FOR SALE

Guide \$3m

### VIEW

Sat 13th Jun @ 12:00PM - 12:30PM

### AGENTS

Kythese Kolodzinski  
0448 994 881  
kkolodzinski@ljhnewport.com.au

Elizabeth Charlton  
0457 177 060  
lcharlton@ljhnewport.com.au

### AGENCY

LJ Hooker Newport  
(02) 9979 1111

All information contained therein is gathered from relevant third parties sources.  
We cannot guarantee or give any warranty about the information provided.  
Interested parties must rely solely on their own enquiries.



- Jacuzzi spa and three person sauna creating a resort style atmosphere
- Six spacious bedrooms, including two with ensuites
- Flexible lower level rumpus, studio or private retreat (STCA)
- Open plan living and dining areas filled with natural light
- Travertine flooring and beautifully refined interiors throughout
- Marble and CaesarStone kitchen with integrated Smeg appliances
- Alfresco terrace overlooking Pittwater with low maintenance gardens
- Oversized garage, wine cellar, workshop, ducted air conditioning and solar power

**Disclaimer:**

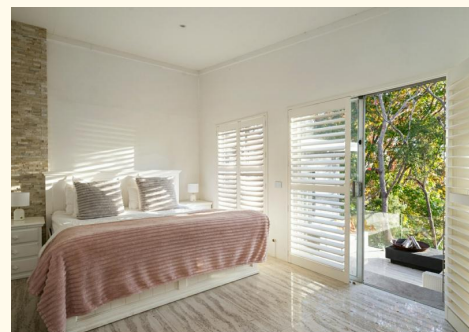
All information contained herewith, including but not limited to the general property description, price and the address, is provided to LJ Hooker Newport by third parties. We have obtained this information from sources we believe to be reliable; however, we cannot guarantee its accuracy. The information contained herewith should not be relied upon and you should make your own enquiries and seek advice in respect of this property or any property on this website.

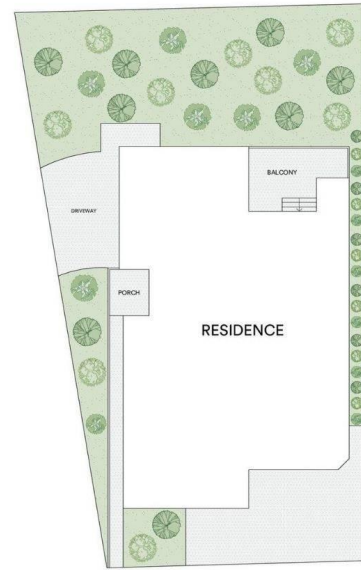
**MORE DETAILS**

Property ID	1B3WG5W
Property Type	House
Land Area	765 m2
Including	<ul style="list-style-type: none"> <li>Ensuite</li> <li>Pool</li> <li>Spa</li> <li>Courtyard</li> <li>Dishwasher</li> <li>Outdoor Entertaining</li> <li>Area Views</li> <li>Car Parking - Basement</li> <li>Close to Schools</li> <li>Close to Shops</li> <li>Close to Transport</li> <li>Pool</li> </ul>

**Kythese Kolodzinski 0448 994 881**  
 Sales Executive | [kkolodzinski@ljhnewport.com.au](mailto:kkolodzinski@ljhnewport.com.au)  
**Elizabeth Charlton 0457 177 060**  
 Executive Assistant | [lcharlton@ljhnewport.com.au](mailto:lcharlton@ljhnewport.com.au)

**LJ Hooker Newport (02) 9979 1111**  
 303 Barrenjoey Road, NEWPORT NSW 2106  
[newport.ljhooker.com.au](http://newport.ljhooker.com.au) | [newport@ljhnewport.com.au](mailto:newport@ljhnewport.com.au)





**328 Lower Plateau Road, Bilgola Plateau**



All information contained therein is gathered from relevant third parties sources.  
 We cannot guarantee or give any warranty about the information provided.  
 Interested parties must rely solely on their own enquiries.

